



April 6, 2026

The Update in Brief

- UHP Club Elections | Run for UHP Club Officer (Pg. 1)
- Honors Thesis Spotlights | Lindi Pomeroy, Grace Cain (Pgs. 2-3)
- UHP Events | Honors Thesis Presentations; Save The Dates (Pgs. 4-5)
- Announcements & Opportunities | Behavioral Health Job Fair; BRS CramSesh; Job Opportunities; Fulbright Information Panel; Earth Forum; Volunteer for Benny's Closet with the Sustainability Club; SARE (Pgs. 6-14)

RUN FOR UHP Club Officer!

**Submit your candidacy
by midnight, April 19 using [this form.](#)**

**All candidates must
give a speech at the
Votes & Floats Event
on April 21.**

- President
- Vice President
- Secretary
- Treasurer
- Historian (Social Media)

**Learn more about each position on the
[UHP Student Club Webpage](#)**

Contact Dr. Rick at sarahrick@isu.edu with questions.

HONORS THESIS SPOTLIGHT

Lindi Pomeroy

Here Out West: Investigating American Intermountain West Dialect Representation



When Lindi Pomeroy isn't focused on her studies, you can often find her working in the garden center at Lowe's or participating in a variety of community activities. She is a dedicated member of The Comedy Project, Pocatello's local improv group—which just completed its largest fundraiser yet—and is highly involved in the Chi Alpha Christian Fellowship on campus. Recently, she has been spending her time at home learning to knit and bake sourdough bread, and she notes that she and her husband "are excited for good hiking weather again!"

Lindi's honors thesis explores the gap in media representation for the dialects of the American Intermountain West. Building on previous linguistic research, Lindi observed dialectal markers through local news databases and analyzed how those dialects are represented across five forms of written and visual media. Calling for greater representation, she concluded her paper with a piece written entirely in her native Idaho dialect. Read her [full abstract here](#).

The inspiration for this project was born during her first two years at ISU, where she connected with her thesis advisors, Dr. Susan Goslee and Dr. Sonja Launspach. Dr. Goslee, her first creative writing professor, helped develop her writing skills immensely, while Dr. Launspach's sociolinguistics course opened her eyes to how different dialects are represented and treated across the country. While diving into the research, Lindi found a deeply personal connection to the data. "I found that a lot of the dialectal features I was hearing or reading about were ones that I'd noticed in my grandparents and their siblings, who were very much rural Idahoans," she shared. "It really reminded me of home and gave me a sense of pride that I was finding representation for the people I came from, and that was really incredible to see!"

After graduating this May, Lindi is heading to law school and is currently deciding between the University of Montana and the University of Oregon. She plans to dedicate her career to "public defense and service work, specializing in rural or criminal law."

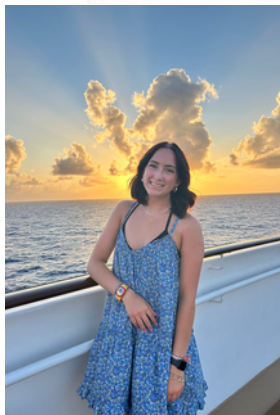
For incoming honors students considering undergraduate research, Lindi's biggest piece of advice is simple: "Always ask -- I found that I had a lot of opportunities I didn't even know about that were offered to me simply from asking." She encourages students to respectfully reach out to professors whose labs or fields interest them. Above all, she recommends entering the research field with "a sense of curiosity and humility," noting that "it's an opportunity to conduct research, and any professor wants to see you being willing to learn and grow!"

Friday, April 10th | 12:00 PM | LA 324 or on [Zoom](#)

HONORS THESIS SPOTLIGHT

Grace Cain

Developing Probes and a Protocol for In Situ Hybridization to Visualize the Spatial Organization of Androgenic Molecules in *Lythrypnus dalli*



When Grace Cain isn't busy at the lab bench, she is highly active on campus and dedicated to helping her community. She serves as a teaching assistant for the advanced anatomy and physiology lab and is the vice president of the Microbiology Club. Off campus, she volunteers as a medical assistant at the Pocatello Free Clinic and lends her time to the Crisis Text Line. To unwind and have fun, Grace says she loves to "do nails and cross stitch!"

Grace's honors thesis focuses on Bluebanded gobies—a unique Teleost fish capable of bidirectional sex change. She developed a novel protocol to study androgens and sex-related molecules in these fish. By optimizing her methodology, Grace was able to visualize the spatial distribution of mRNA expression, ultimately discovering that the ovaries of these fish are capable of de novo androgen synthesis. Read her [full abstract here](#).

Her journey into this specialized research began at the end of her freshman year when she joined Dr. Pradhan's lab. Realizing she loved both anatomy and studying gene expression, Grace collaborated with Dr. Pradhan and Dr. Ray to design a project that perfectly married her two big interests. She utilized "in situ hybridization (which essentially turns tissues purple where specific genes are being expressed)" to conduct her research.

Grace embraced the challenge of developing a protocol that was not only new to her, but new to the species itself. "I really enjoyed the process of making the probes and working on a protocol for this project," she explains. "Because it was not only new to me, but also new to this species, there was a lot of troubleshooting and learning! I felt like every week I learned something new in the lab, and I have developed so many of my benchwork skills that I would have never done without this thesis."

She also cherished her unique mentorship dynamic, noting, "I don't think a lot of students get the opportunity to work so closely with two professors simultaneously and jump in between two labs, but it was something I really enjoyed!"

For incoming honors students considering undergraduate research, Grace encourages them to "simply put yourself out there and say yes to every opportunity!" She reminds students that getting started is often easier than people think, but emphasizes that persistence is key: "Once you start research, stay resilient! Research can be hard, and there are ups and downs, but it is always very rewarding to overcome those trials!"

Friday, April 10th | 3:00 PM | LC 17 or on Zoom

Upcoming UHP Events

HONORS THESIS PRESENTATION

Lindi Pomeroy

*Here Out West: Investigating American Intermountain
West Dialect Representation*

Friday, April 10 @ 12 PM | LA 324 & [Zoom](#)

Grace Cain

*Synthesizing Probes and Refining a Protocol for In Situ
Hybridization of Androgen Related Molecules in
Bluebanded Gobies*

Friday, April 10 @ 3 PM | LC 17 & [Zoom](#)

FLOATS & VOTES

Enjoy rootbeer floats while you listen to speeches and vote for
the 2026/2027 UHP Club Officers.

Tuesday, April 21 | 6:00PM | REND 204 (Planetarium)

SAVE THE DATE FOR CIVIC SCHOLAR CAPSTONES

Lizbeth Arellano Santoyo | Thursday, April 20 @ 12 PM

Amina Miljkovic | Wednesday, May 6 @ 12 PM

Chelsea Blanchard | Monday, May 4 @ 10 AM

More Details Coming Soon!

Upcoming UHP Events

SAVE THE DATE FOR HONORS THESIS DEFENSES

Lindi Pomeroy

*Here Out West: Investigating American Intermountain
West Dialect Representation*

Friday, April 10 @ 12 PM | LA 324 & [Zoom](#)

Grace Cain

*Synthesizing Probes and Refining a Protocol for In Situ
Hybridization of Androgen Related Molecules in
Bluebanded Gobies*

Friday, April 10 @ 3 PM | LC 17 & [Zoom](#)

Shannon Hendricks

*The rescue of Streptococcus pneumoniae Mn-sensitive
growth defect by Magnesium*

Tues, April 14 @ 10 AM | LC 17 & Zoom

Amina Miljkovic

*Determinants of Oral Health Care Among Idahoan
Pregnancies: Pregnancy Risk Assessment Tracking
System (PRATS) Analysis*

Weds, April 15 @ 10 AM | REND 108 & Zoom

Joseph Funk

Live, Laugh, Resist: A Care Ethic for the End Times

Friday, April 17 @ 10 AM | LA 151 & Zoom

Saige Rigby

Effects of Asbestos Dosage on Kidney IgG Deposition

Friday, April 24 @ 3 PM | LC 17 & Zoom



Annual Interprofessional Behavioral Health Job Fair

Learn about job openings and internship opportunities in Idaho's behavioral health workforce!

Date and Time: *Wednesday, April 8 from 10am - 2pm*

Pocatello Location: *SUB Wood River Room*

Meridian Location: *Lobby*

ROAR

SPRING 2026

CRAMSESH

For the homework that was due yesterday.

April 16 | 3 - 6 PM
Rendezvous Suites

- DEADLINES**
- PIZZA**
- DRINKS**
- PRIZES**

*For more information,
visit blackrockandsage.org.*



**Idaho State
University**

Job Opportunity:

Fall 2026 HONORS ENVOY

- Director's Assistant & Outreach Envoy
- Web Development Envoy
- Communications Envoy
- Instructional Assistant Envoy (2 positions available)

Paid position with \$300 scholarship and up to an additional \$300 (\$9 per hour)

We are now accepting applications!

Learn more about each position and submit your application by midnight on April 20th on the

[Honors Envoy Webpage](#)

or email honors@isu.edu for more info

Job Opportunity: Want to be on the radio?

Sustainable Idaho Radio Show Host GPI

No experience necessary--student hosts will receive training--but an interest in sustainable topics is a must!

Sustainable Idaho, an award-winning weekly radio show on KISU, is seeking new student host interns to start this summer. Hosts work every week with professionals from the Portneuf Resource Council to decide on topics, write questions, arrange and hold interviews, edit the recorded interview with professional equipment, and revise their drafts after feedback.

This position is funded through the Career Path Internship program at **\$13/hour**. To be eligible, students should be prepared to train over the summer and then be available for a **10 hour per week** commitment during the academic year.

If you're interested in the position, send a cover email explaining your interest in the position, along with a resume, to Linda Engle LindaRSEngle@gmail.com



Discover the World: Fulbright Information Panel


Are you interested in teaching, conducting research, or studying abroad? Join us for an inspiring afternoon with **Idaho State University's own Fulbright Scholars** to learn how you can take your academic journey global.

Event Details

 **Date:** Thursday, April 16, 2026

 **Time:** 12:00 PM – 1:00 PM (Noon)

 **Platform:** [Zoom](https://zoom.us) (or visit www.isu.edu/academicaffairs/isu-fulbright-program/)

 **Audience:** Open to all Faculty and Students

What to Expect

This panel is a unique opportunity to hear firsthand accounts from ISU faculty who have successfully navigated the Fulbright process. Our local scholars will share:

- **Personal Experiences:** Insights into living and working in a different culture.
 - **Application Tips:** Strategies for crafting a competitive proposal.
 - **Q&A Session:** A chance to ask specific questions about your field of interest or potential host countries.
-

What is the Fulbright Program?

Founded in 1946, the **Fulbright Program** is the U.S. government's flagship international educational exchange program. Its mission is to foster mutual understanding between the people of the United States and other countries.

- **For Students:** Provides grants for individually designed study/research projects or English Teaching Assistant (ETA) programs in over 140 countries.
- **For Faculty:** Offers opportunities to lecture, conduct research, or lead seminars abroad, helping to build long-lasting professional connections and globalize curricula.

"The Fulbright Program's mission is to bring a little more knowledge, a little more reason, and a little more compassion into world affairs." — *Senator J. William Fulbright*

Questions?

Please contact the ISU Fulbright Committee at fulbright@isu.edu or visit the Office of Academic Affairs website for more information.

We look forward to seeing you there!

EARTH FORUM 2026

APRIL 22, 2026 | 09 AM

REGISTRATION IS OPEN NOW!

EVENT HIGHLIGHTS

- Panel Discussions*
- Networking*
- Poster Presentations*

LOCATION

SUB / Ballroom

IMPORTANT

You must be registered to attend this event.

Scan Me Now to Register



Registration closes on April 6, 2026



Participate in **Benny's Closet**, a service project to bring affordable secondhand items to campus



The Sustainability Club needs your help!!

- Build your resume
- Get involved on campus
- Connect with other sustainability opportunities

In need of volunteers to help with collection and storage of thrift items.

Email betinastrawhun@isu.edu for more information





DONATE TO BENNY'S CLOSET

EVERY MONDAY • 12 - 2 PM

Pond Student Union Table

Bring clothing and any items in good condition!



If you have any questions, reach out to sustainability@isu.edu

- ✔ Clothing
- ✔ Household Items
- ✔ Stationery

Thank you for your donation!



Summer Authentic Research Experiences (SARE)

Summer Authentic Research Experiences (SARE) is designed to engage Idaho undergraduates in the science, technology, engineering, and mathematics (STEM) fields related to I-CREWS research and increase the number and preparation of skilled scientists and engineers in I-CREWS fields (geosciences, biological sciences, social sciences, and resilience science, computational modeling, machine learning and artificial intelligence) to provide analytical outcomes to proactively address the impacts of meteorological, population, and technological change on energy-water (E-W) systems.

Each student receives hands-on, paid (up to \$6,000) summer research experiences (full-time or part-time educational opportunities available), where they study topics broadly related to the I-CREWS project. Each SARE educational opportunity is designed as a learning experience and not employment.

Students participating in SARE will be expected to present research results at the Idaho Conference on Undergraduate Research (ICUR) in July 2026, as well as the Idaho NSF EPSCoR Annual Meeting. Students will be expected to participate in a virtual Summer Research Community, hosted by Boise State University, and network with other students in the SARE program. Students will also be required to submit a research profile to the Idaho EPSCoR website.

Student Applications are due on May 1, 2026

Find more information at idahocrewws.org/sare/
or contact ISU SARE lead Emma Fox-Fogle (emmafoxfogle@isu.edu)



IDAHO
NSF EPSCoR
ADVANCING GEOGRAPHIC DIVERSITY IN STEM



ISU Bengal Theater Showings



Avatar: Fire and Ash
(PG-13)
April 8, 9, & 10 - 7pm



Zootopia 2
(PG)
April 11 - 4pm & 7pm



Marty Supreme
(R)
April 16 & 17 - 7pm
April 18 - 4pm, 7pm



Wuthering Heights
(R)
April 23 & 24 - 7pm
April 25 - 4pm & 7pm



Idaho State University

University Honors Program

Dr. Sarah Robey | Honors Director | sarahrobey@isu.edu

Dr. Kathryn Holt | Instructor/Coordinator | kathrynholt@isu.edu

Dr. Sarah Rick | Instructor/Coordinator | sarahrick@isu.edu

Lori Tapanila | Academic Support | loritapanila@isu.edu

www.isu.edu/honors



[@idahostatehonors](https://www.instagram.com/idahostatehonors)



[@Idaho State University Honors](https://www.facebook.com/IdahoStateUniversityHonors)



[@Idaho_Honor](https://twitter.com/Idaho_Honor)