



Idaho Museum of Natural History



Science Trek Turns 30

Idaho's longest running and most successful STEM sleepover event, continues the tradition of hands-on learning, and Idaho State University faculty provides a fun and supportive atmosphere. Now in its fourth decade, Science Trek has hosted over 3,600 kids across two generations, and is the go-to museum event in southeast Idaho.



From the Director



How did 2020 get here so fast? Here at the Idaho Museum of Natural History, the exuberance of youth abounds. Our service to Idaho's education system provides a continuous ladder of support to Idahoans from kindergarten to college through our exhibit tours, classroom visits, after-school and weekend programs, and internships. We focus our education around STEM disciplines that integrate creative and artistic expression, and are rooted in an appreciation of nature. In 2019, the energetic education program led by

Virginia Jones increased by 25% the number of kids we serve, with personal service to all counties in the eastern half of the state. And now, thanks to the donors at last year's fundraiser, we made significant upgrades to our education room so it can support creative learning for years to come. Your membership to the Museum helps support our educational programs and provides engaging experiences to over 7,300 kids annually. We thank you for your support of our Museum and our community. Best wishes to you in 2020!

— Leif Tapanila

Increasing our Impact

Exhibit visitors

7,111 ↑8%

.....

Education programs served

7,321 ↑25%

children

.....

Student Internships

21,300

hours

.....

Endowment funds

\$119,951 ↑10%

.....

Press Release Potential Reach

8 Million

.....

Nature of Idaho radio audience

200,000

STEM Classroom Revamp

Our Education Room is a workhorse for the museum. Every year, thousands of kids and adults learn about nature here, but with so much activity, the room was getting worn down. Thanks to major sponsorships from ON Semiconductor, Westmark Credit Union, Phil Meador Toyota, and donations from last year's fundraiser, we are happy to unveil a new creative space complete with 3D sculpting, printing, and robotics capabilities. Thank you all!

Before



After



National Geographic December 2019 Issue

features our research



RESEARCH



Museum faculty and affiliates published over a dozen papers this year. Affiliate Curator Dr. L.J. Krumenacker authored several papers describing new fossil species from Idaho. One in particular he named for his mentor, emeritus professor and Museum curator, Dr. Bill Akersten. "I've never had the opportunity to name a species before," says L.J., "and it was great to name one after Bill Akersten because he was a great advisor. He got me where I am today." *Cimolodon akersteni* was a mouse-sized mammal that lived 100 million years ago in eastern Idaho. "It's the oldest Idaho mammal that has a name."



EDUCATION | Girls Who Code

GIRLS WHO CODE

NO CHILD LEFT INSIDE

STEM LEARNING FOR LITTLES

AFTER SCHOOL PROGRAM

5th GRADE FOSSILS

BIRD CLUB

This free after-school program for 3rd-8th graders is a supportive group of peers and role models where girls learn to see themselves as computer scientists. Girls who have participated in Girls Who Code are 15 times more likely to choose computer science or related fields than the national average.

Welcome Brandon!

Dr. Brandon Peacock joins the Museum and ISU as assistant curator and professor of vertebrate paleontology.

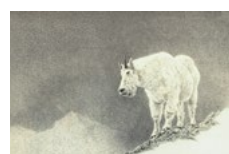


Thank You Janet & Rick



For the past decade, collections manager, Janet Bala, and curator, Dr. Rick Williams, worked together in the Museum's Ray J Davis Herbarium to archive this valuable plant collection and produce an important online database that will help research and education for decades to come. Congratulations on your retirement!

FEATURE EXHIBITS



Discover the Naturalist Within



Discover Exoplanets



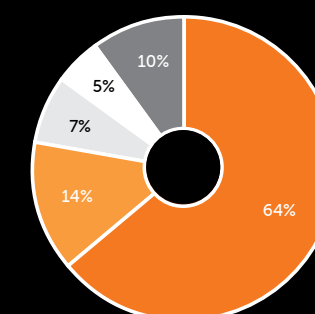
Buzzsaw Sharks of Idaho



Wrensted and Native American Clothing

Buzzsaw Exhibit ends its 5 year run visited by 500,000+

FINANCIALS



Legislature
\$649,935
ISU
\$142,092
Earned Income
\$113,322
Fundraising
\$67,908
Grants
\$50,509



The Nature of Idaho

Now in its second season, join IMNH's Leif Tapanila, and Zoo Idaho's Peter Pruett, as they talk about all the different ways to enjoy Idaho's natural wonders. The show airs every week on KISU 91.1 FM Thursdays at 8:30 a.m. and you can find previous episodes on podcast.



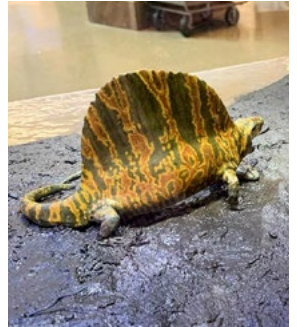
Membership Rewards

Your 2020 membership to IMNH gives you free access to hundreds of museums through the ASTC passport program. This is very handy if you travel outside our region: just search to see what museums participate at your destination and voila!

Idaho Virtualization Lab



The crew scanned a blue whale and several giant mammal skeletons in California this summer, and created unique models for the Smithsonian's new Deep Time exhibit in D.C. See their creations in our new exhibit, *In The Shadows*.



UPCOMING EVENTS



5th Annual Roaring Twenties Fundraiser February 29, 2020

Join us for the 5th annual Museum Fundraiser. Funds raised will support our summer exhibition, *Animationland*. Come for an evening of dining, music, entertainment, auctions, games, and dancing!



In The Shadows January 2020-2021

See What Creeps When You're Asleep. Our newest exhibit takes you on a fascinating journey through the hidden pockets of the world around us.



Animationland May-September 2020

Join Tracey the pencil dog and her crew on a fantastically immersive journey to create stories with art and science. Channel creativity using animation basics such as storyboarding, sketching, stop-motion movie making, and more!

Thank You Sponsors

Idaho Community Foundation

.....

Phil Meador Toyota

.....

Ifft Foundation

Laura Moore
Cunningham Foundation

.....

F.M., Anne G., and
Beverly B. Bistline Foundation

Westmark Credit Union

.....

ON Semiconductor

.....

NPG of Idaho, Inc.



imnh.isu.edu

