



Idaho Museum of Natural History



This Is Idaho

Brimming with over 700 specimens from the Museum's vault, **THIS IS IDAHO** shows the natural splendor of the Gem State. Arranged as a giant map of Idaho, the exhibit highlights our five distinct ecosystems and the diverse plants, animals and cultures that make our State unique.

From the Director



The Museum had a great rebound year in 2021, and we're looking forward to building upon this year's successes. It's wonderful to see such positive responses from tourists and local visitors to our new *This Is Idaho* exhibit. We believe that real objects have the power to connect people with place, time and nature. When a child gets to pet a real 50,000-year-old mammoth bone, we are making lasting memories! The framework for this exhibit will allow us to feature different collections over time and give visitors more opportunities to see objects representing the diversity of our state.

Going forward, we are making plans to open a new 2,000 square foot gallery to expand exhibition offerings to our visitors. We are also planning a redesign of our popular Discovery Room. Visitors will learn by doing: stream tables and other hands-on activities will illustrate how waterways shape the people and environment in the West. Expect to see lots of educational programs at the Museum in 2022. We're particularly excited for the return of Science Trek – the longest running STEM activity in Idaho, that introduces kids to fields of study at Idaho State University. And we'll hold our 2nd Annual Fall Fossil Fest in October, complete with the Buzzsaw guillotine and atlatl target practice. Thank you for your support and we look forward to another year of curiosity and discovery!

Serving Our Mission

Exhibit visitors

7,566

Education programs served

4,642
children

Digital engagement

180,000

Student internships

10,500
hours

Museum Objects in Collections

1.2 Million
in public trust

Nature of Idaho radio audience

200,000



EDUCATION

Travel restrictions and social distancing limited how and where we could serve our education mission, and required we think outside the box this year. And from necessity comes innovation. We took our education programs outside!

FALL FOSSIL FEST

AFTER SCHOOL PROGRAM

SCHOOL FIELD DAYS

SOILS GRANT

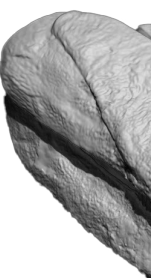
ISU CLASS VISITS



In October we ran our first Fall Fossil Fest. This annual event presents hands-on activities to engage visitors with the science and research coming from our Museum. Making use of the gallery and the outdoor ISU quad, kids were learning about the importance of soil, they were making animal trackways, and chopping food with a Buzzsaw Shark guillotine. Also, learning the fine art of throwing atlatl darts! Look for this event on October 15, 2022.

Finding it difficult to bring elementary students to the Museum, we decided to visit the schools this year. Partnering with Zoo Idaho, the Museum held 'field days' on the playgrounds of Pocatello and Chubbuck schools for 14 days in May. Kids got to see and learn about animals, both modern and fossil, including this T. rex skull. We look forward to doing this again!

Museum - Zoo Field Days:
2,388 elementary students



Welcome Robert, Tabatha, and Evelyn!



We're excited to introduce new staff to the Museum! Our education programs are managed by Robert Gay, who comes to us from Colorado with additional experience in paleontology. Tabatha Butler, an ISU alumna with museum experience, is the Museum's new director for development. And, having trained as an ISU intern at the Museum, Evelyn Vollmer now works to support research efforts in our Virtualization Lab. Welcome to Team Bison!



RESEARCH

Unlocking the Secrets of the Dire Wolf

January 2021
Nature



Newly Identified Saber- toothed Cat is One of Largest in History

May 2021
*Journal of Mammalian
Evolution*



These Hips Don't Lie: 3D Imaging of a Pelvis Suggests Social Care for Saber-tooths

October 2021
Scientific Reports

ISU Paleontologist's Fossil Finds Shed Light on Life after Permian Mass Extinction

October 2021
Nature



Fossil Dental Exams Reveal How Tusks First Evolved

October 2021
*Proceedings of the Royal
Society B*

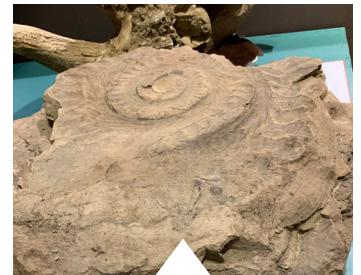


Kate Brown, ISU Fine Arts Student Collaborates on This is Idaho



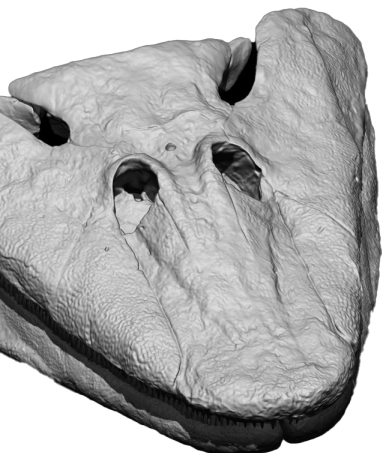
ISU Doctoral Student Xavier Jenkins Credited with Discovery of 220-million-year-old Reptile

October 2020
*Journal of Vertebrate
Paleontology*



Helicoprion Donated by Bayer US

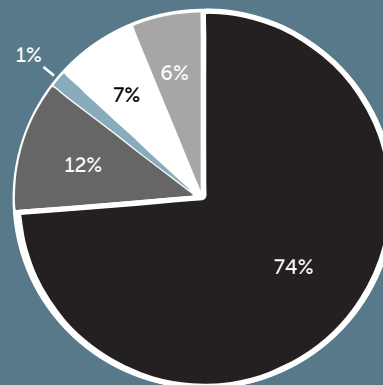
November 2021



The Museum
reconstructed the
world-famous skull of
Tiktaalik, a transitional
fossil from fish to land
animals



FINANCIALS | FISCAL YEAR 2021



■	Legislature	\$624,700
■	ISU	\$98,897
■	Fundraising	\$12,067
■	Grants/Research	\$58,794
■	Earned Income	\$52,650

MM 2021 EXHIBITS



Skulls: Everyone's
Got One



This Is Idaho



Traveling Exhibit:
Snakes of Idaho

The Nature of Idaho

What a fun year of interviews! We talked with an astronaut, Dr. Scott from Dinosaur Train and congressman Mike Simpson. And the show was awarded General Excellence in Audio by the Idaho Press Club Best of 2020. Season 4 kicks off in January with more surprises about Idaho's natural world. Tune in!



Ocean to Idaho

Kris Millgate entertained Frazier Hall with the remarkable and timely story of salmon in Idaho. The connection of Idaho rivers to the sea affects not only salmon, but the livelihoods of all who live in this region. It was great to be a part of this community discussion on the future of water management.



FUTURE PLANS

Discovery Room Redesign

We want to transform the Discovery Room with hands-on activities that connect Idahoans to the importance of water. It will feature a stream table, water table, digital sandbox, and other resources to help understand today's big questions.

Where does my water come from?

How do Idaho rivers support human activities?

How is Idaho connected to the ocean?

How do dams affect life in and around rivers?



UPCOMING EVENTS

Remembering Bear River Film
Screening January 27, 2022

Love Your Museum February 2022

Animal Spring Fling March 2022

Science Trek 31 April 22, 2022

Behind The Scenes Monthly

Diving Into Nature Lectures Monthly

Thank You Sponsors



F.M., Anne G., and Beverly
B. Bistline Foundation



NATIONAL
ENDOWMENT
FOR THE
HUMANITIES

