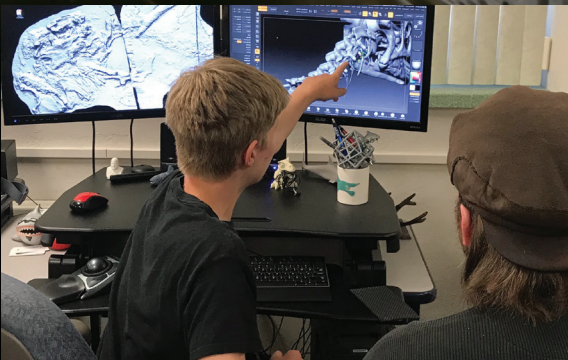




Idaho Museum of Natural History

Discovering Idaho, One Story at a Time

Thanks to a generous donation by the Laura Moore Cunningham Foundation, the Museum acquired a large format 3D printer.



Kids Make Dino Exhibit

The museum made history this summer – literally – with a Dino Camp experience that had kids create and 3D print a dinosaur from scratch! Combining digital modeling, artistry, and fieldwork, 21 middle school students made a full-scale model of Idaho's dinosaur, *Oryctodromeus*, which is now on exhibit at the museum. Stay tuned for summer camp 2019.



From the Director

“The museum celebrates its 85th anniversary this year – that’s sapphire in case you were wondering. It was back in November of 1934 when Charlton Laird headed a committee at the southern branch of the University of Idaho – what is now Idaho State University in Pocatello – to form a Historical Museum to display materials for the institution. It was the community of Pocatello that helped the fledgling museum succeed, through donations of time and funding, and most importantly, by recognizing the value of having a vibrant museum in their hometown. With the

growth of the Museum to serve a statewide mission in 1977, our connection to local and regional communities remain central to our success. This is true now more than ever. We have big plans for 2019 with the hire of a new research curator, a reinvigorated volunteer program, a nature-themed radio broadcast, and for the first time, we have developed a series of in-state travelling exhibits to increase accessibility to Idaho’s amazing heritage. We thank you for your support and look forward to a remarkable 2019 full of discovery.

— Leif Tapanila

Highlights from 2018

Red Panda

The Museum’s Idaho Virtualization Lab digitally scanned and 3D printed a fossil cast of the world’s first *Pristinailurus bristoli*, a 4 million year old ancestor to the modern Red Panda. The cast is now on display at the Tennessee State Museum.



EXHIBITS | Astronomical Idaho in 2018

ASTRONOMICAL IDAHO

THE INCREDIBLE HORSE

IDAHO’S DINOSAUR

THE FLOWS

BUZZSAW SHARKS OF IDAHO

From ISU research at Craters of the Moon to the meteorite that landed in Jerome, this summer’s marquee exhibit gave audiences a fun space adventure. With our simulators we found out that it takes a lot of patience to fly a spaceship or navigate a Mars rover. And thanks to Patrick Cavanaugh, we got to see his amazing collection of Martian meteorites. Lots of great memories to spark future space explorers.

2018 exhibit numbers...

6567

VISITORS

564

ISU VISITORS*

.....

23,000

VOLUNTEER & INTERN HOURS



* Gallery is now free for students.



RESEARCH in 2018

ANCIENT LANDSCAPES RESEARCH
by Amy Commendador

GIANT SNAKES ARTICLE
Co-authored by director Leif Tapanila

BOOK ON SABERTOOTH CATS
Co-authored by affiliate faculty Chris Shaw

Ancient Landscapes

As part of her PhD dissertation, Museum collections manager Amy Commendador is analyzing the bones of ancient pygmy rabbits and pocket gophers to reconstruct climate on the Snake River Plain over the last 10,000 years.

"Small mammals are a good proxy for paleoclimate reconstruction because they have very small home ranges, they don't migrate very far," Commendador said. "If you have a sequence of bones in a deposit you can look at abundances and diversities of small mammals in them and they will directly correlate with climate." Results of her research are expected in 2019.



2018 education
programs served...

5848
CHILDREN



EDUCATION | ZeroRobotics in 2018

ZEROROBOTICS

FAB SLAM

NO CHILD LEFT INSIDE

STEM LEARNING FOR LITTLES

BIRD CLUB

Imagine getting the opportunity to see your ideas tried out on the International Space Station in real time. That's exactly what 30 middle school students got to do this summer at our ZeroRobotics workshops. Writing code for the SPHERES robots on the ISS, the IMNH ZeroRobotics team, as part of Team Idaho, placed 3rd in the international competition. They even got to spend a day working with NASA astronaut, Steve Swanson.



Mary's Retirement

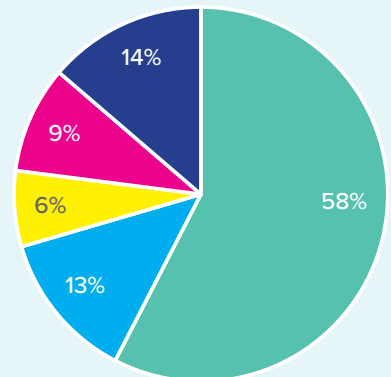
Congratulations and thanks to Dr. Mary Thompson for caring for Idaho's history as Senior Collections Manager for Earth Science.

25 YEARS



FINANCIALS

From Legislature	\$616,200
From ISU	\$138,042
Fundraising	\$146,811
Grants/Research	\$99,011
Earned Income	\$70,024

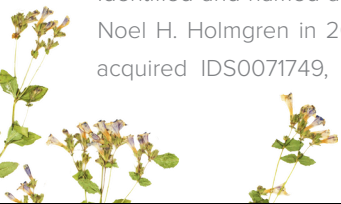


New Species in Idaho

Penstemon salmonensis:

Identified and named as a new species by Noel H. Holmgren in 2018. Our herbarium acquired IDS0071749, collected from the

same population as the type specimen, adding to our growing understanding of the unique plants that live in Idaho.



REACHING OUT | **Bison Biz** in 2018



BISON BIZ

IMNH HOSTS IDAHO ASSOCIATION
OF MUSEUMS SPRING WORKSHOP

BUZZSAW SHARK HOMECOMING
IN SODA SPRINGS

Ten unique Pocket Exhibits, sponsored by local businesses, engage community members to learn about Idaho's natural history via a treasure hunt format. Strong social media engagement is helping connect IMNH to business and community.



Citizen Science

Every Friday our curator emeritus, Karl Holte, teaches how to identify plants using dichotomous keys and learning plant terminology. Now in its 13th year, the class is open and free to the public.



IMNH Programs Supported

300

CITIZEN SCIENTISTS THIS YEAR

UPCOMING EVENTS



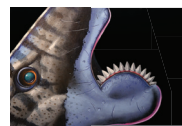
Museum Masquerade Benefit [March 30, 2019](#)

Save the date! On March 30th the Museum will hold its annual masquerade benefit to celebrate our 85th Anniversary. Live and silent auction, good food and friends all for a good cause.



30 Years of Science Trek [April 26-27, 2019](#)

Idaho's most successful and longest running STEM event continues the tradition of hands-on learning with Idaho State University faculty in a fun atmosphere that includes a sleepover at the Museum.



Super Sharks [Summer 2019](#)

Our Buzzsaw show is getting a big makeover with new research and weird monsters.



Giant Animal Scanning [Summer 2019](#)

Two National Science Foundation awards to the museum will fund our lab to laser-scan the skeletons of giraffes, elephants, hippos, and even a blue whale! This activity is part of a major national effort to create digital collections of biodiversity for research and education.

With thanks to...

The IMNH expresses its gratitude to the State of Idaho and Idaho State University whose support enables us to fulfill our unique responsibilities.

The IMNH is proud to share the successes of 2018 with its annual sponsors: KIDK, Fox 5, and the Pine Ridge Mall. We are extremely grateful to ON Semiconductor, Westmark

Credit Union, and the Idaho State Journal for exhibit support of Astronomical Idaho and to Simplot and Bayer for support of Buzzsaw Sharks of Idaho. We are extremely grateful to our Bison Biz Partners for their collaboration.

The Idaho Virtualization Lab secured the generous support of the Laura Moore

Cunningham Foundation and several National Science Foundation Awards and the Ray J. Davis Herbarium was honored with a gift from the Forever Idaho East Fund in the Idaho Community Foundation.

The IMNH is grateful for the support, loyalty and enthusiasm of our partners, our friends, patrons and benefactors.



698 E Dillon St, Pocatello, ID 83201



Twitter Instagram YouTube Facebook Google+



(208) 282 - 3168



imnh.isu.edu