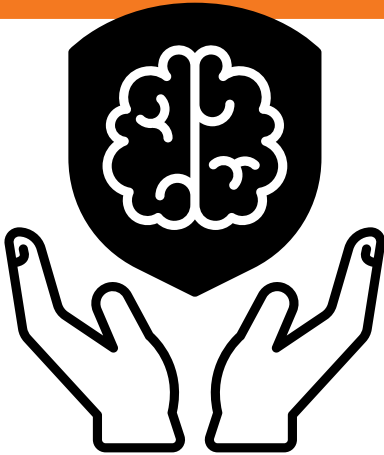




BEHAVIORAL HEALTH CHW TRAINING



Designed to bolster and support the Community Health Worker workforce in behavioral health settings.

Currently Recruiting:

- Community Health Workers (CHWs) and related paraprofessionals
- Individuals working in behavioral health settings statewide
- Those serving children, adolescents, and transitional-age youth in high-need communities

CHOOSE YOUR PATHWAY:

Pathway 1: Training

14 SEATS AVAILABLE IN YEAR 1

CHW Training Program

- CHW Core Course (48 hrs, online)
- CHW Advanced Course (48 hrs, online)
- CHW Practicum (48 hrs, experiential learning at approved site)
- Behavioral Health SkillStack Badge (10 online modules)

Pathway 2: Apprenticeship

8 SEATS AVAILABLE IN YEAR 1

CHW Training Program + Apprenticeship

- Register as an Idaho CHW Apprentice (Idaho Department of Labor)
- Complete the CHW Training Program (Pathway 1)
- Work with your current employer as an on-site apprentice
- Log 30+ hours per week (2,000 hours)
- Log competencies and hours per apprenticeship standards

Additional Program Expectations

- Participate in at least one approved behavioral health training/certification outside of the CHW Training Academy (approved training list and tuition support will be provided)
- Complete required reporting & program evaluations
- Commit to serving Idaho's behavioral health workforce post-completion, especially in high-need, integrated care settings

Funding support is available to selected participants.

Apply Now



BEHAVIORAL HEALTH CHW TRAINING

Timeline

YEAR 1 APPLICATION TIMELINE

OCTOBER- NOVEMBER	Accepting Applications
DECEMBER	Notification of Selection and Onboarding

YEAR 1 SESSION TIMELINE: 2026

JANUARY 1	Apprenticeship Participants Onboarded
JANUARY-APRIL	CHW Behavioral Health Core Training Session
MAY- AUGUST	CHW Behavioral Health Advanced Training Session CHW Behavioral Health Practicum Training Session
SEPTEMBER	Behavioral Health CHW Training Program Completion

Year 2 Applications will open in late summer 2026.

Funding support is available to selected participants.

Apply Now

This program is supported by the Health Resources and Services Administration (HRSA) of the U.S. Department of Health and Human Services (HHS) as part of an award totaling \$500,000.00 with 0% financed with non-governmental sources. The contents are those of the author(s) and do not necessarily represent the official views of, nor an endorsement, by HRSA, HHS, or the U.S. Government. For more information, please visit HRSA.gov.