
Appendix D: Building Specific Details

Important Notification:

(Pages 1-24 of this document can be found by accessing the [Emergency Action Base Plan](#))



Physical Science Complex

Building Number: 3 Physical Science

3A Chemistry

Type: Education

Address: 785 S 8th Ave

Additional information: The Physical Sciences Complex houses several classrooms, laboratories and offices, and is home to the Departments of Mathematics, Physics, Geosciences and Chemistry. The building is operated on two different fire alarms that operate independent of the other. For this reason, plans include personnel contacts from each side of the building. When entering the building from the main entrance, Mathematics, Physics and Geosciences entrance is to the right. The Environmental Health Safety & Sustainability department is also located in this section. Chemistry is accessed using the left side of the main entrance.

Contact Personnel

Report Emergencies to the Department of Public Safety at (208) 282-2515.

Physical Science

Name	Office Location	ISU Ext. #	Email	Area of Responsibility
Steve Shropshire		2212	steveshropshire@isu.edu	Building Coordinator
Jasmyne Jensen		2350	jasmynejensen@isu.edu	1st Floor Safety Liaison
Joseph Crupper		3365	josephcruupper@isu.edu	2nd Floor Safety Liaison
Amy Avila		4197	amyavila@isu.edu	3rd Floor Safety Liaison
				1 st Floor Monitor
				1 st Floor Monitor Alternate
				2 nd Floor Monitor
				2 nd Floor Monitor Alternate
				3 rd Floor Monitor
				3 rd Floor Monitor Alternate

**Public Safety has alternative contact information for employees for after hour emergencies.*

Floor Monitor Entrance Assignments

Floor Monitors are assigned to an entrance to make sure everyone is exiting as they should be and possibly avoiding doors they shouldn't be using.

1st Floor Monitor (Insert Entrance)
 2nd Floor Monitor(Insert Entrance)
 3rd Floor Monitor(Insert Entrance)

Basement Floor Monitory (Insert Entrance)

Chemistry

Name	Office Location	ISU Ext. #	Email	Area of Responsibility
Lorie Kalivas	PSC 3A 151	4280	loriekalivas@isu.edu	Building Coordinator
Andy Holland	PSC 3A 351/145B	4278	andyholland@isu.edu	Assistant Bldg. Coordinator
Scott Pristupa	PSC 3A 152	2436	scottpristupa@isu.edu	1 st Floor Monitor
JD Lloyd	PSC 3A 145	4444	jdllloyd@isu.edu	Safety Liaison
Enouri Omar	PSC 3A 244	4707	enouriomar@isu.edu	2 nd Floor Monitor
Andrew Bernard	PSC 3A 243	3422	andrewbernard@isu.edu	2 nd Floor Monitor
Cori Jenkins	PSC 3A 347	3734	corijenkins@isu.edu	3 rd Floor Monitor
Leslie Nickerson	PSC 3A 361	2668	leslienickerson@isu.edu	3 rd Floor Monitor
Lewis Burnam	N/A	N/A	lewisburnam@isu.edu	4 th Floor Monitor
				4 th Floor Monitor Alternate

**Public Safety has alternative contact information for employees for after hour emergencies.*

Floor Monitor Entrance Assignments

1st Floor Monitor [South Central Entrance]
 2nd Floor Monitor [South Stairwell Access]
 3rd Floor Monitor [South Stairwell Access]
 4th Floor Monitor [North Entrance]

Floor Monitors are assigned to an entrance to make sure everyone is exiting as they should be and possibly avoiding doors they shouldn't be using.

Available Life Safety Equipment

Automated External Defibrillator (AED): Is located on on the **Chemistry side of the building** (entrance to the left) in the **main hall by Chemistry Office (Room 145)**

Narcan: One is located on the **first floor by Lobby 161**

Fire extinguisher(s):

Physical Science (3) has **38** fire extinguishers, located in hallways, rooms, and laboratories:

- **19 on the basement level**
- **7 on the first floor**
- **7 on the second floor**
- **5 on the third floor**

Basic First aid kit: **Is a basic First Aid Kit available?**

Chemistry (3A) has **51** fire extinguishers, located in both hallways, rooms, and laboratories:

- **2 on the basement level**
- **20 on the first floor**
- **13 on the second floor**
- **14 on the third floor**
- **2 on the fourth floor**

Basic First aid kit: A basic first aid kit is kept in **every laboratory and stockroom.**

Individuals with Disabilities or Special Needs

Buddy System Option: Individuals with a disability may choose to inform colleagues of any special assistance that may be required in the event of an emergency or emergency evacuation (i.e., hearing the alarm, guidance during the alarm, etc.).

Voluntary Self Identification: For individuals who have special needs, concerns, or may require assistance during an evacuation, please reach out to Disability Services at 208-282-3599.

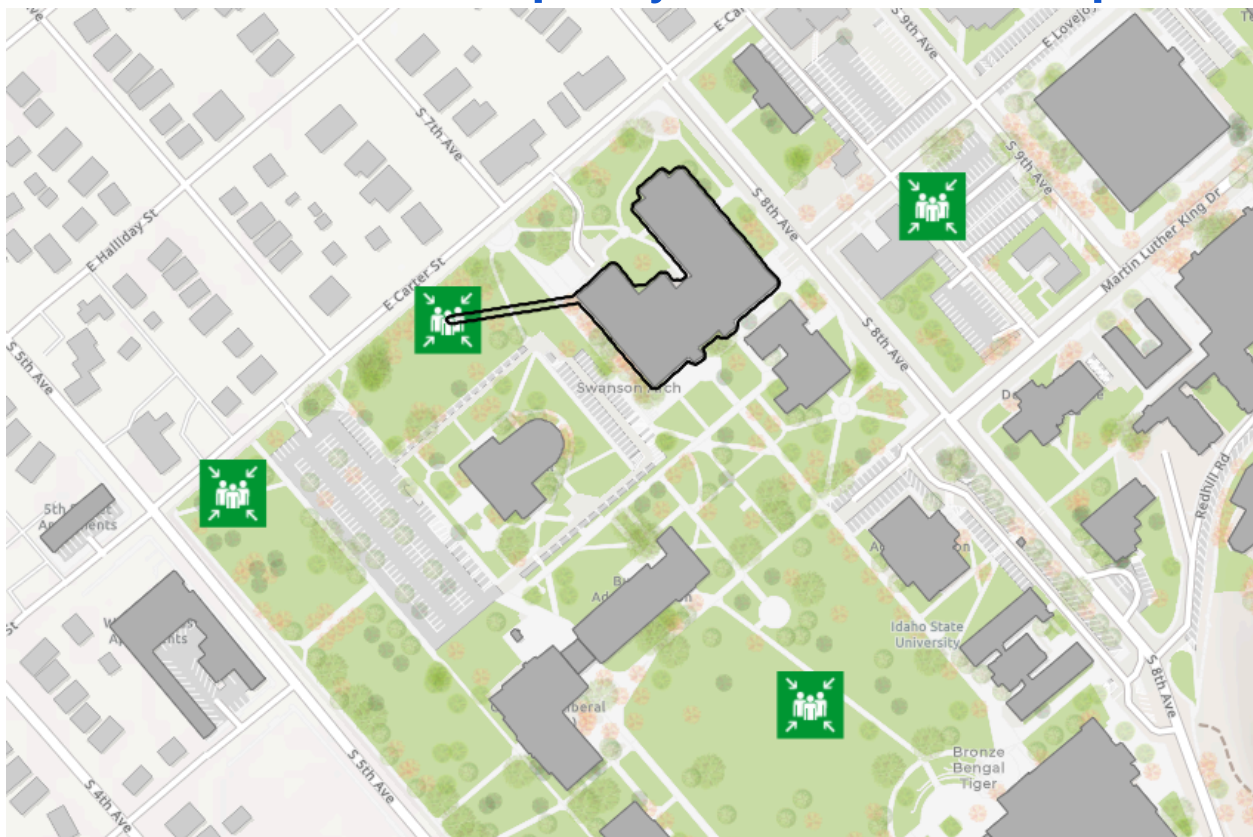
Area of Rescue: Buildings with elevator access have designated Areas of Rescue. These areas are marked inside the building and identified on evacuation maps inside each building.

Individuals with mobility issues who cannot safely evacuate from the building should assemble in the nearest Area of Rescue to wait for additional assistance from responding officials.

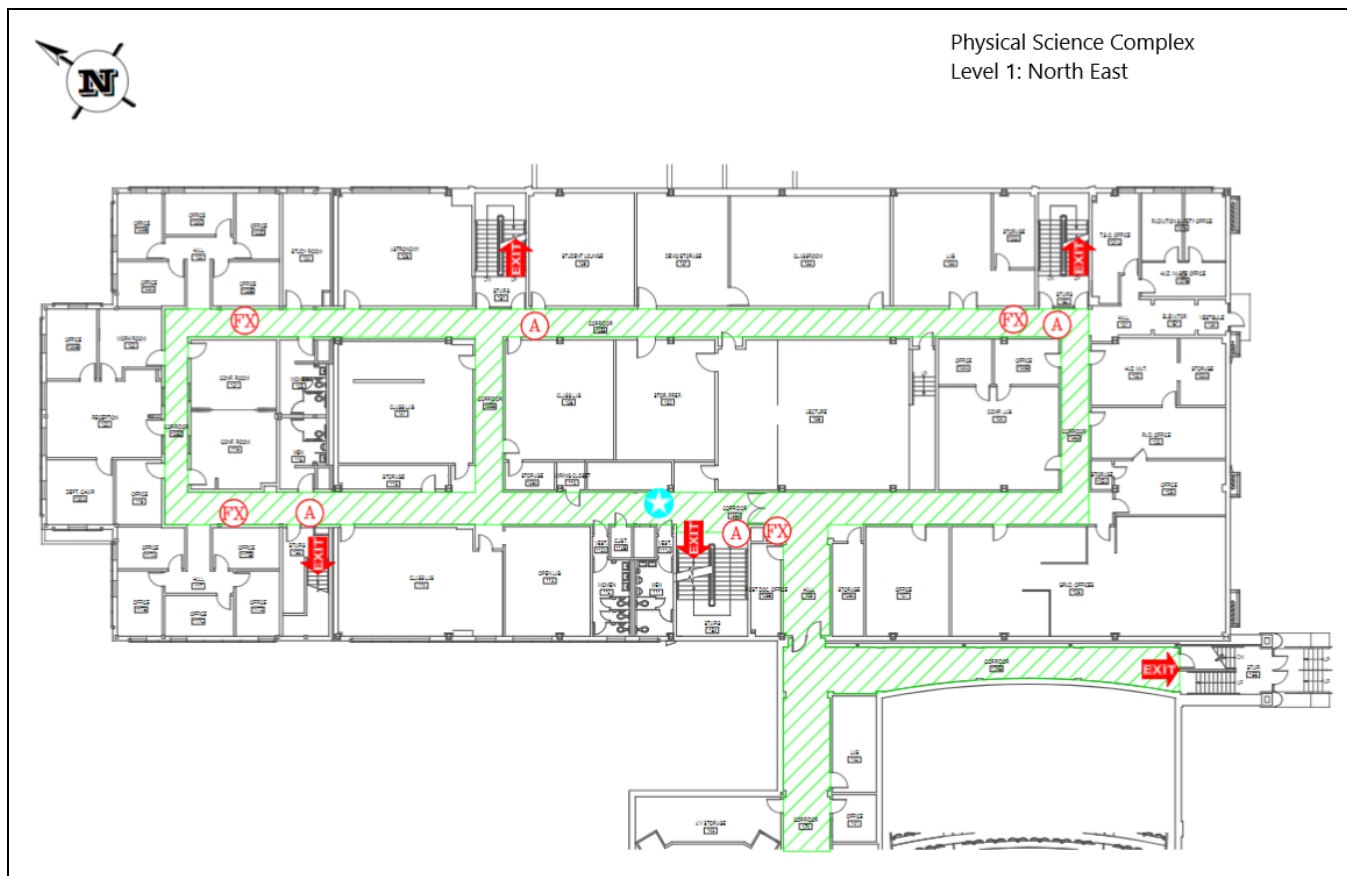
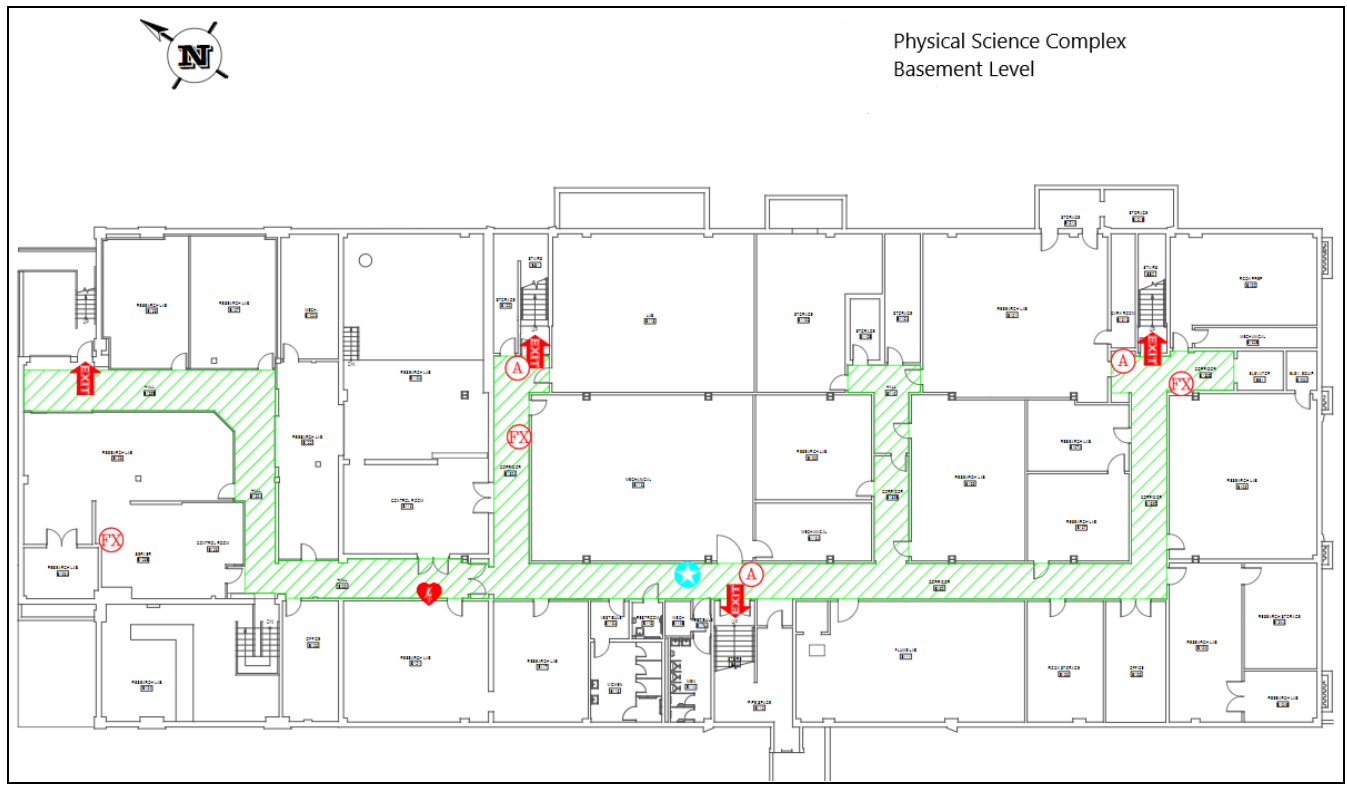
Area of Assembly

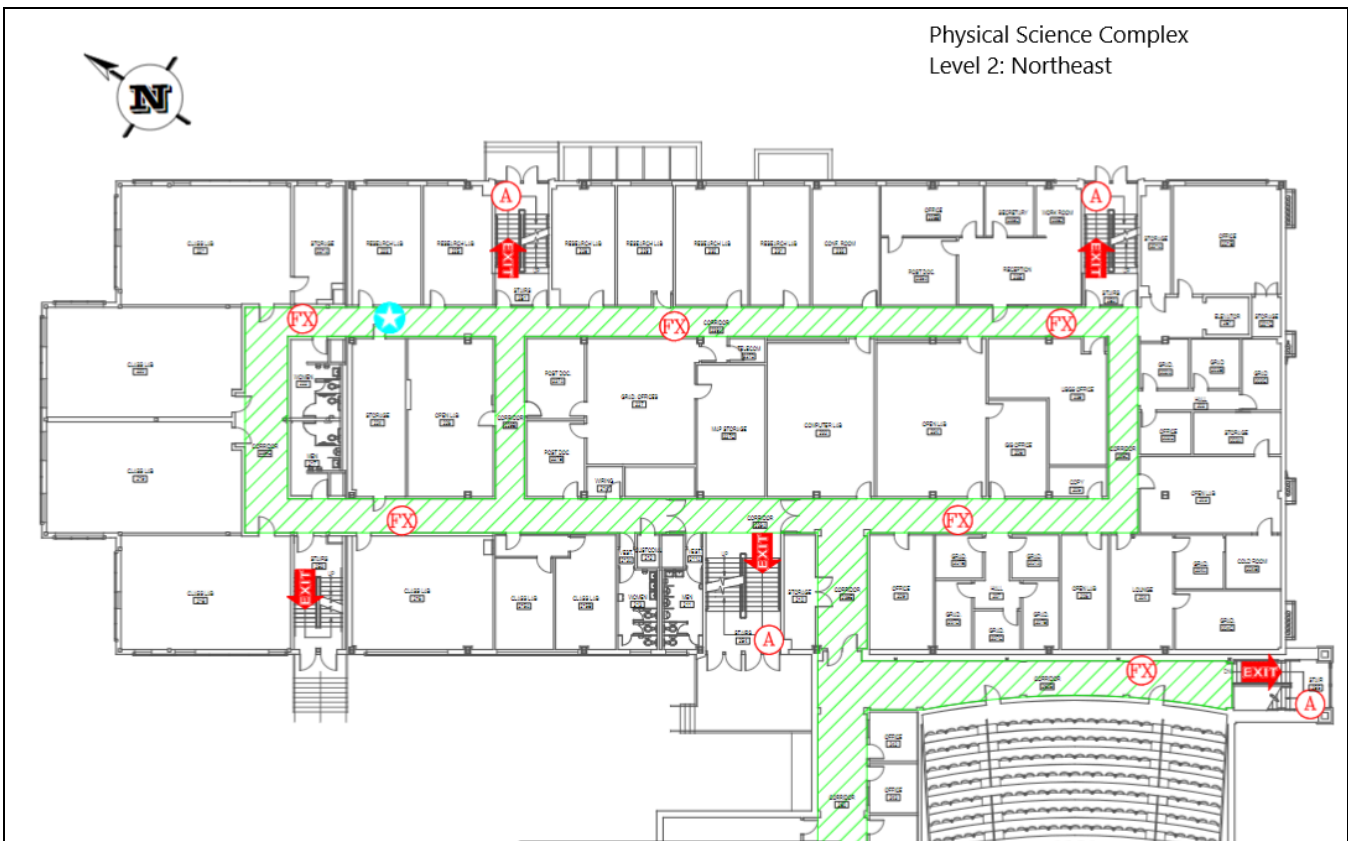
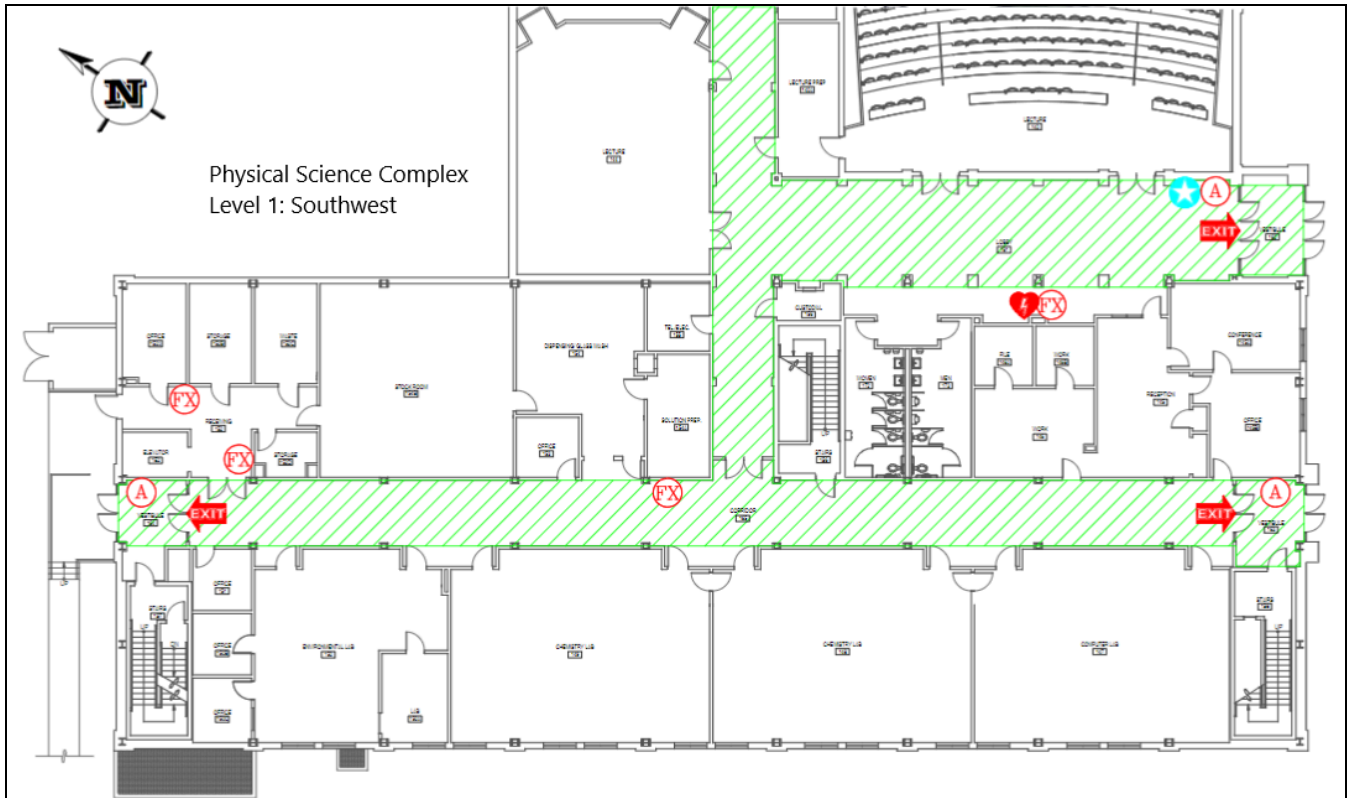
Evacuees should go west to Area of Assembly Zone 11. Zone 11 is on the grass west of the Physical Science Complex, adjacent to E Carter St.

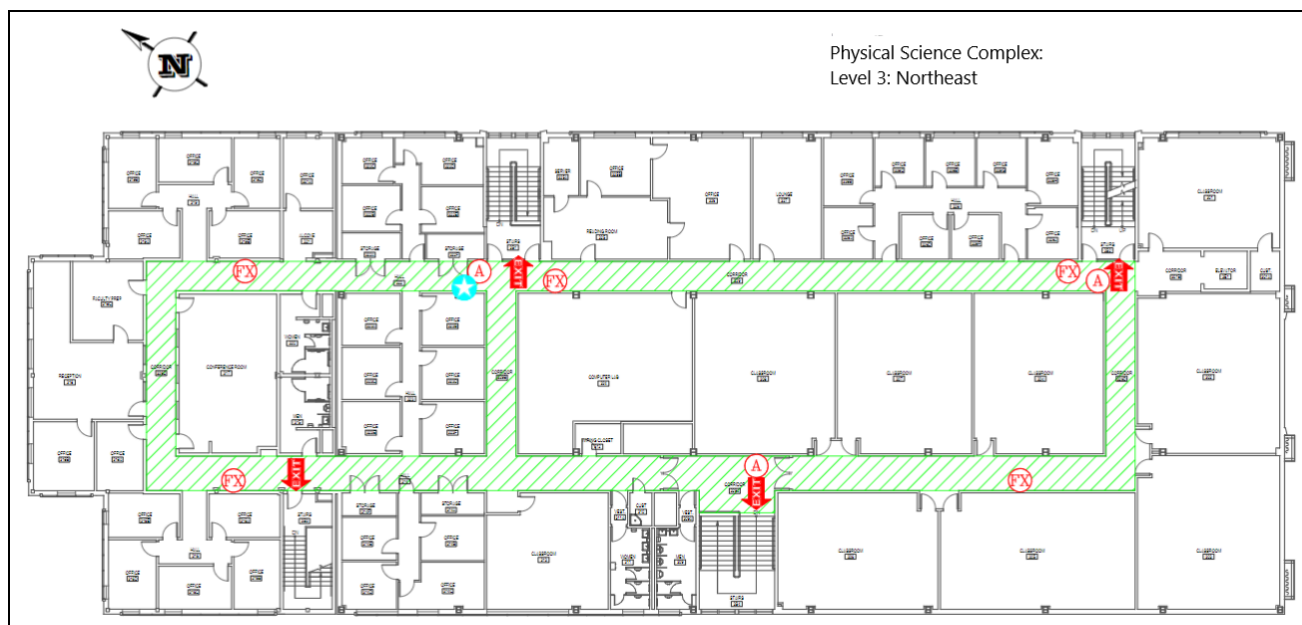
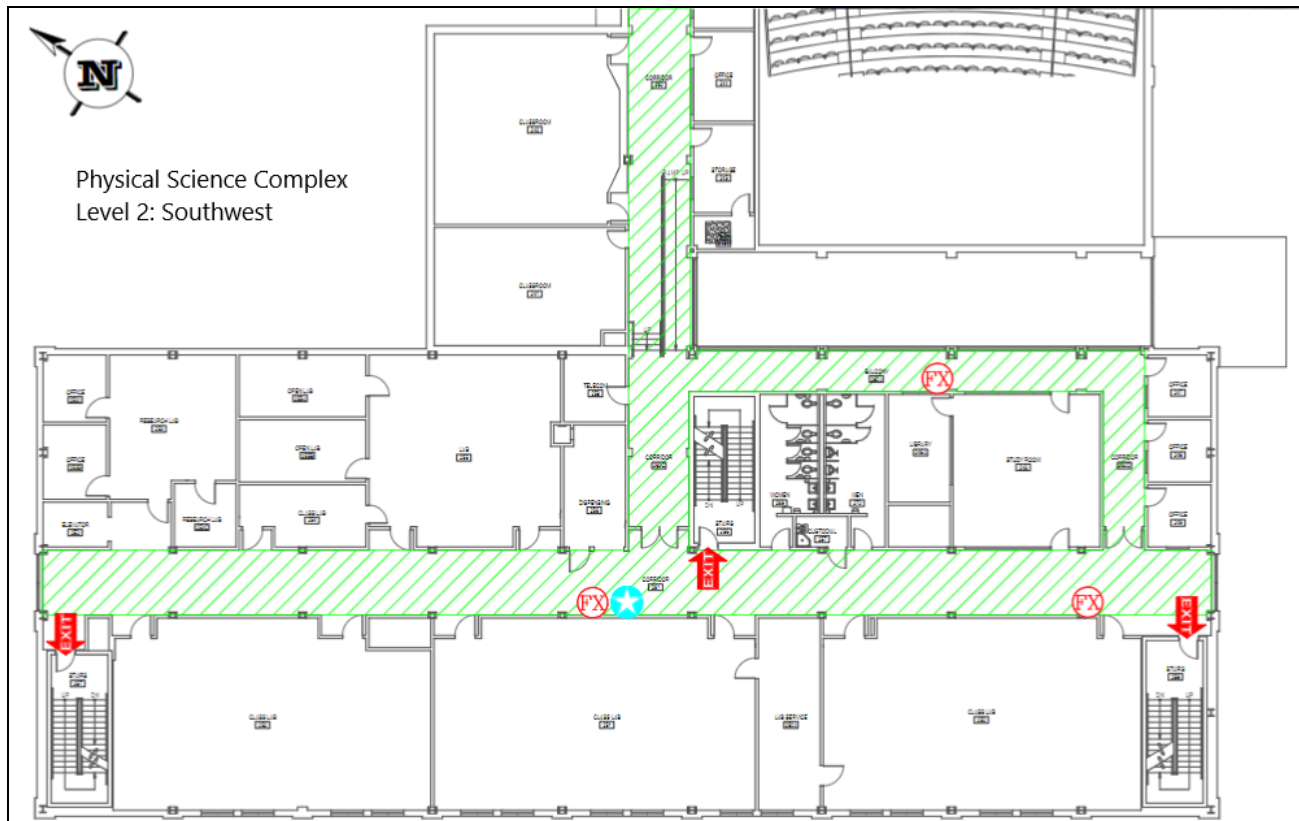
[Access to Online Map: Physical Science Complex](#)



Evacuation Maps

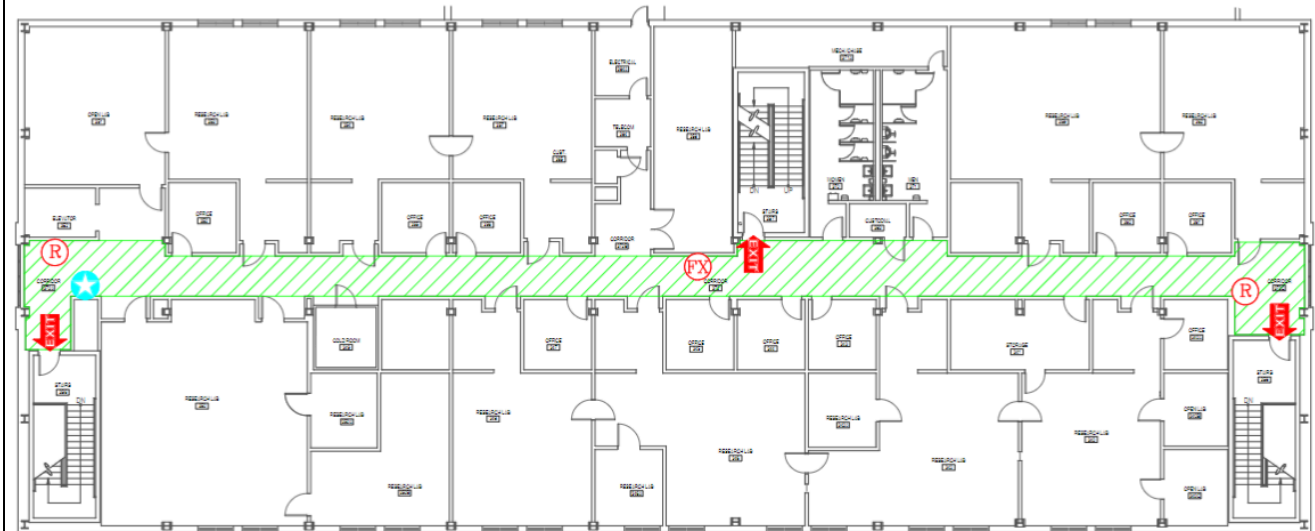








Physical Science Complex:
Level 3: Southwest





Emergency Management

Department of Public Safety

625 East Humbolt Street | Pocatello, Idaho 83209-8140

(208) 282-2515 | emergencymanagement@isu.edu