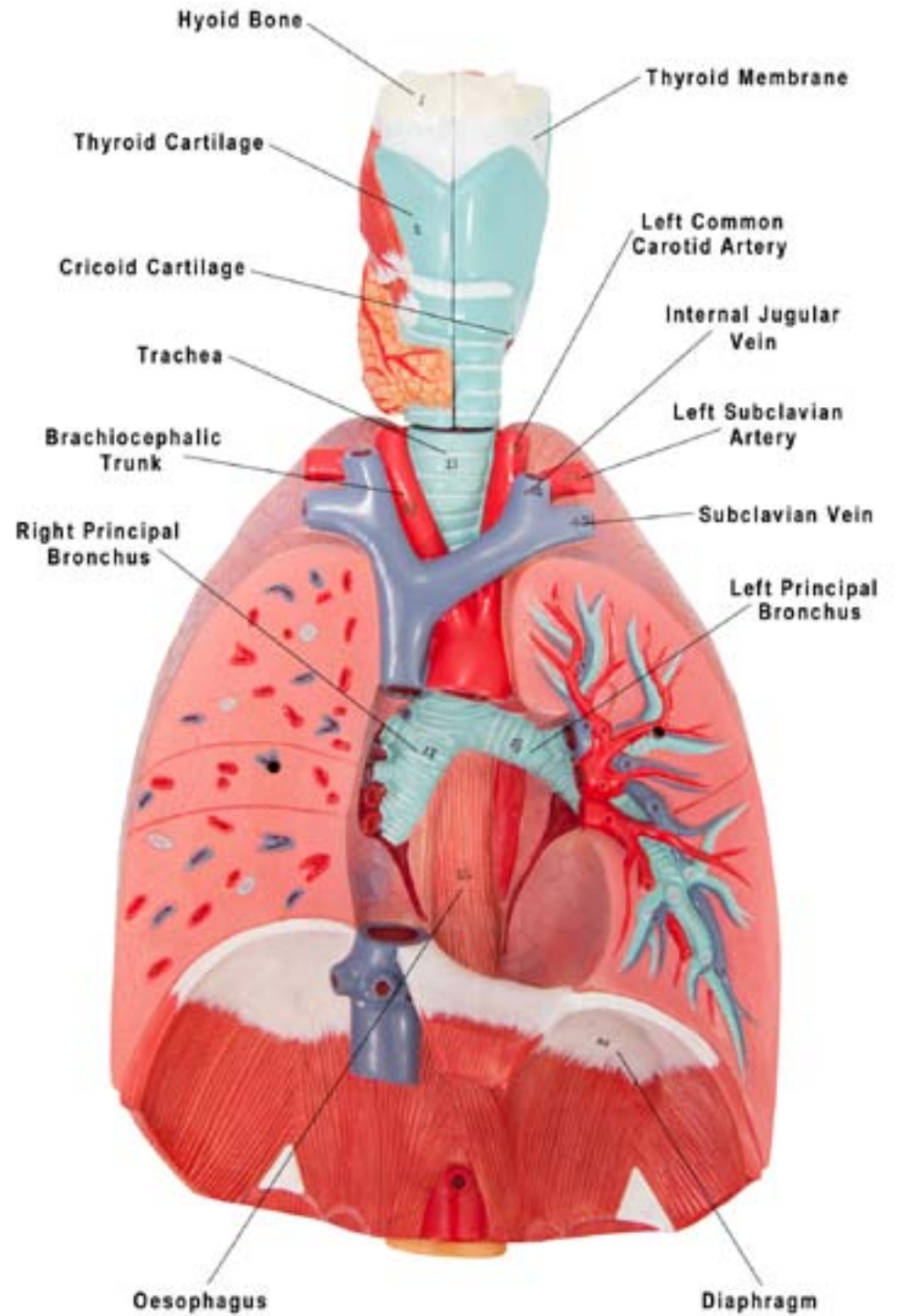
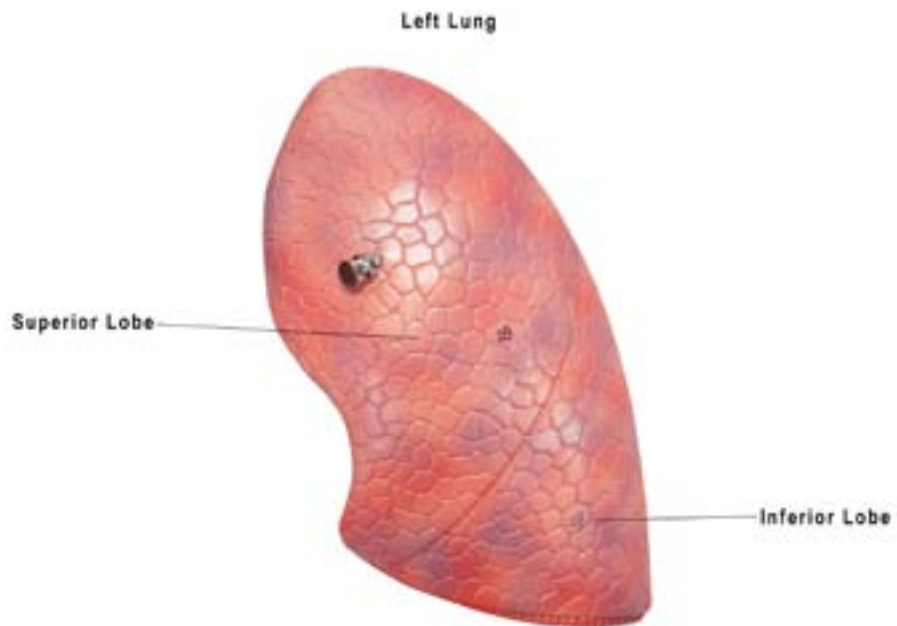
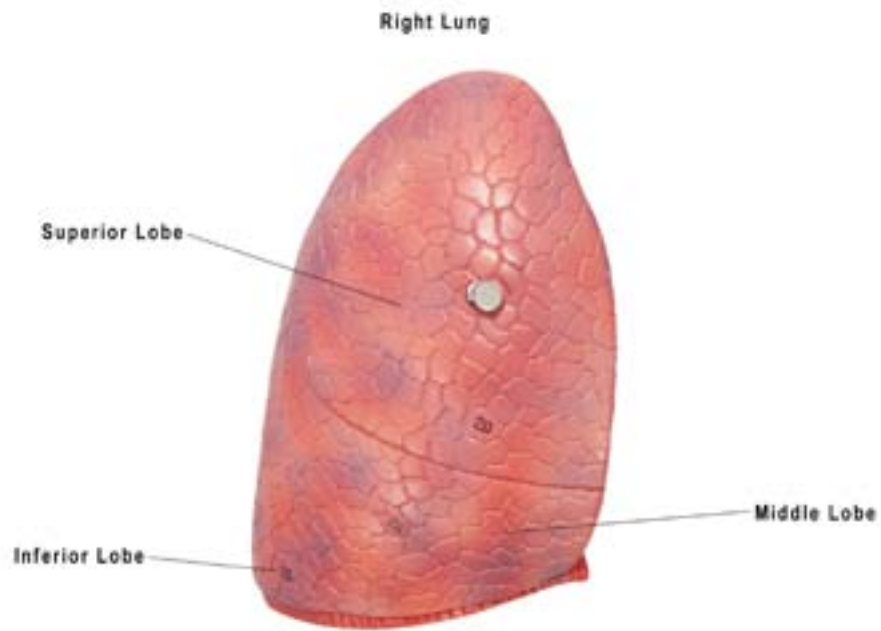
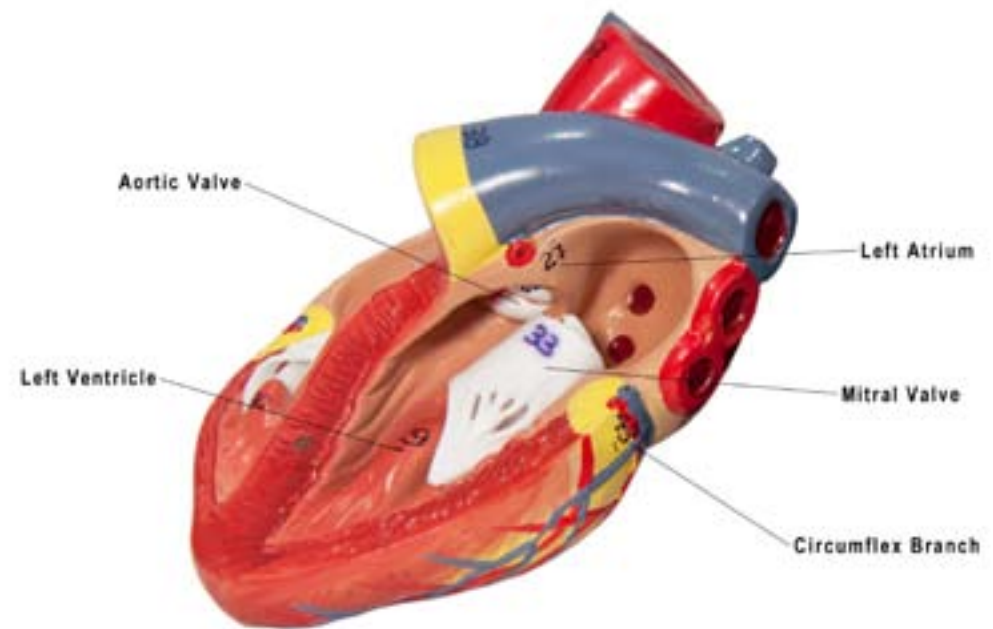
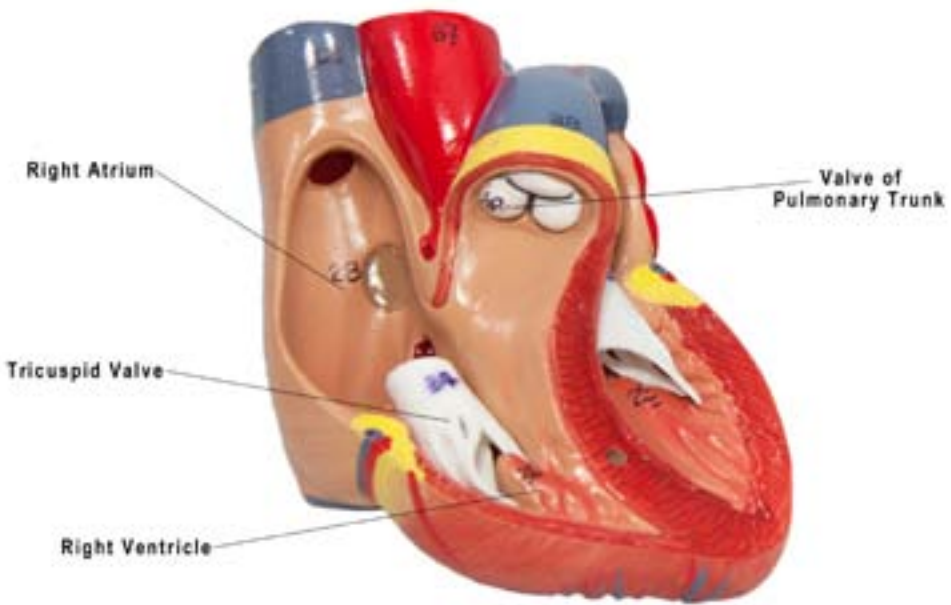
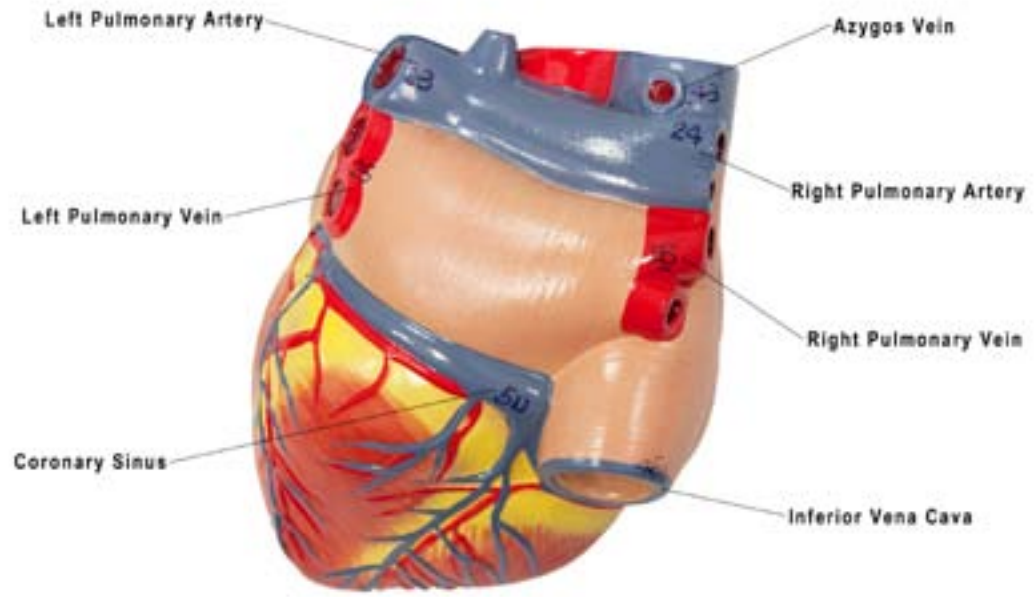
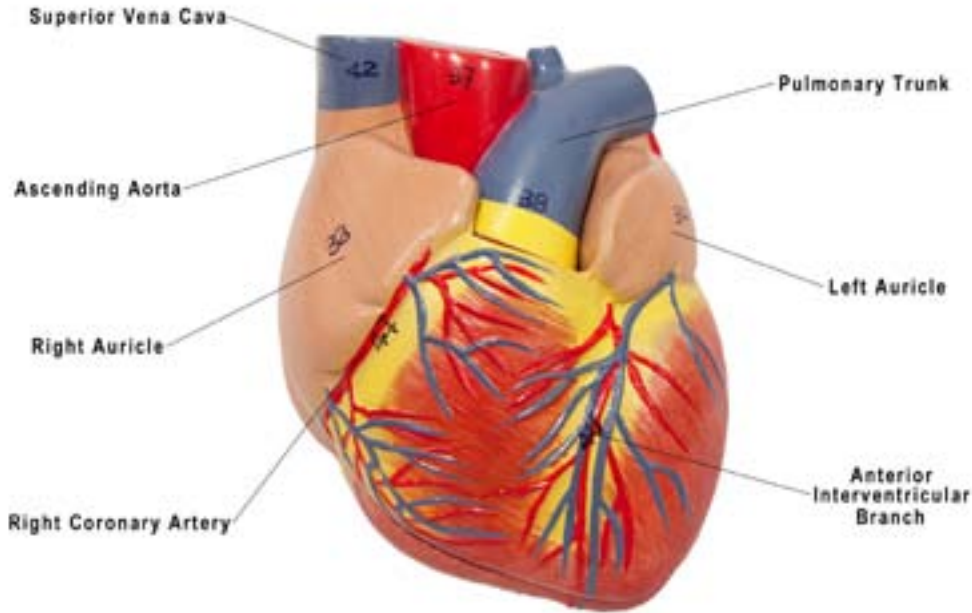


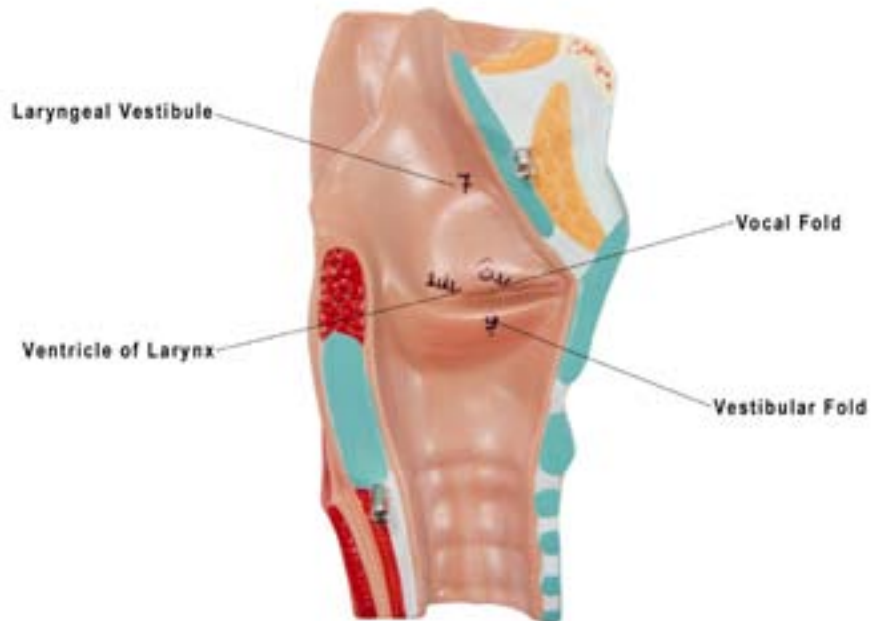
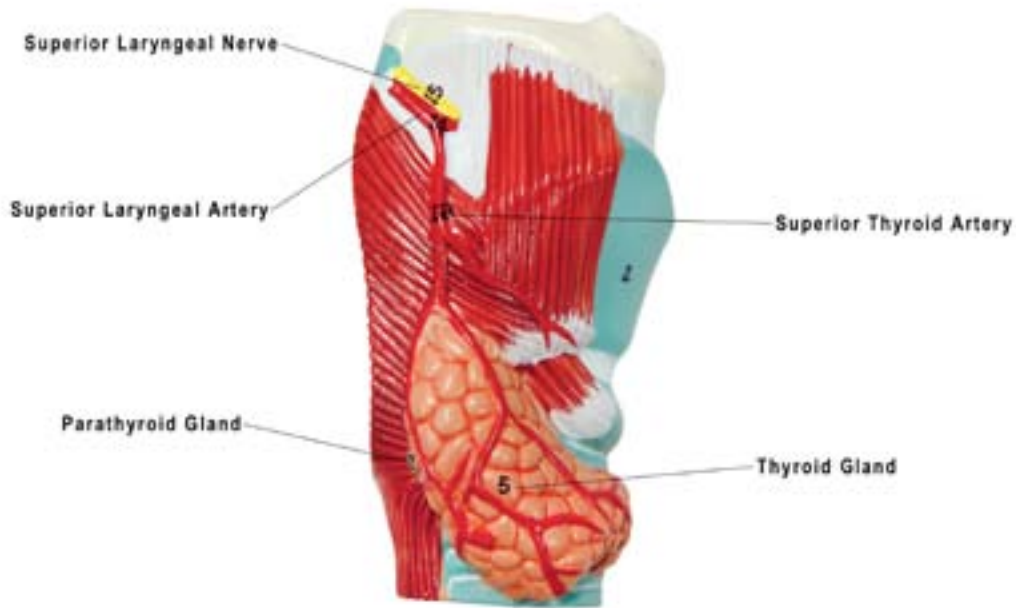


Axis Scientific 7-Part Human Respiratory System (3/4 Life-Size)

A-105184







1. Hyoid Bone
2. Thyroid Cartilage
3. Cricoid Cartilage
4. Thyrohyoid Membrane
5. Thyroid Gland
6. Parathyroid Gland
7. Laryngeal Vestibule
8. Vestibular Fold
9. Vocal Fold
10. Ventricle of Larynx
11. Trachea
12. Oesophagus
13. Superior Thyroid Artery
14. Superior Laryngeal Artery
15. Superior Laryngeal Nerve
16. Left Principal Bronchus
17. Right Principal Bronchus
18. Superior Lobe of Left Lung
19. Inferior Lobe of Left Lung
20. Superior Lobe of Right Lung
21. Middle Lobe of Right Lung
22. Inferior Lobe of Right Lung
23. Left Pulmonary Artery
24. Right Pulmonary Artery
25. Left Pulmonary Vein
26. Right Pulmonary Vein
27. Left Atrium
28. Right Atrium
29. Left Ventricle
30. Right Ventricle
31. Left Auricle
32. Right Auricle
33. Mitral Valve
34. Tricuspid Valve
35. Aortic Valve
36. Valve of Pulmonary Trunk
37. Ascending Aorta

-
38. Pulmonary Trunk
 39. Brachiocephalic Trunk
 40. Left Common Carotid Artery
 41. Left Subclavian Artery
 42. Superior Vena Cava
 43. Azygos Vein
 44. Internal Jugular Vein
 45. Subclavian Vein
 46. Inferior Vena Cava
 47. Right Coronary Artery
 48. Anterior Interventricular Branch
 49. Circumflex Branch
 50. Coronary Sinus
 51. Diaphragm

