

Meridian Expansion Planning Team

Gabe
Bargen

Janet
Renk

Brian
Riopelle

Marvin
Schulte

Gail
Burgett

Laurence
Rose

Cathy
Oliphant

Jen Adams

Walter
Fitzgerald

Tom
Wadsworth

Rex Force

Erik
Silk



Facilities

Vision & Mission


VISION

To provide state of the art and inviting facilities that inspire learning, discovery, and Bengal pride to all who enter.

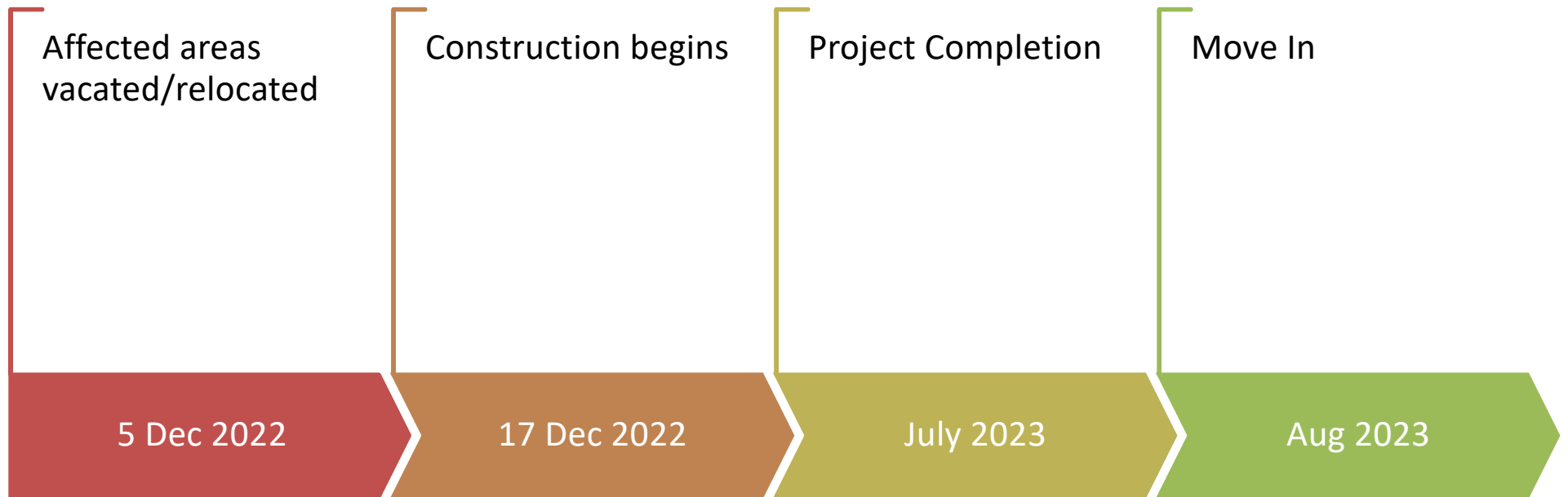
MISSION

Maintain learning, research, and clinical facilities that support the development of caring and collaborative pharmacists, psychopharmacologists, and scholars

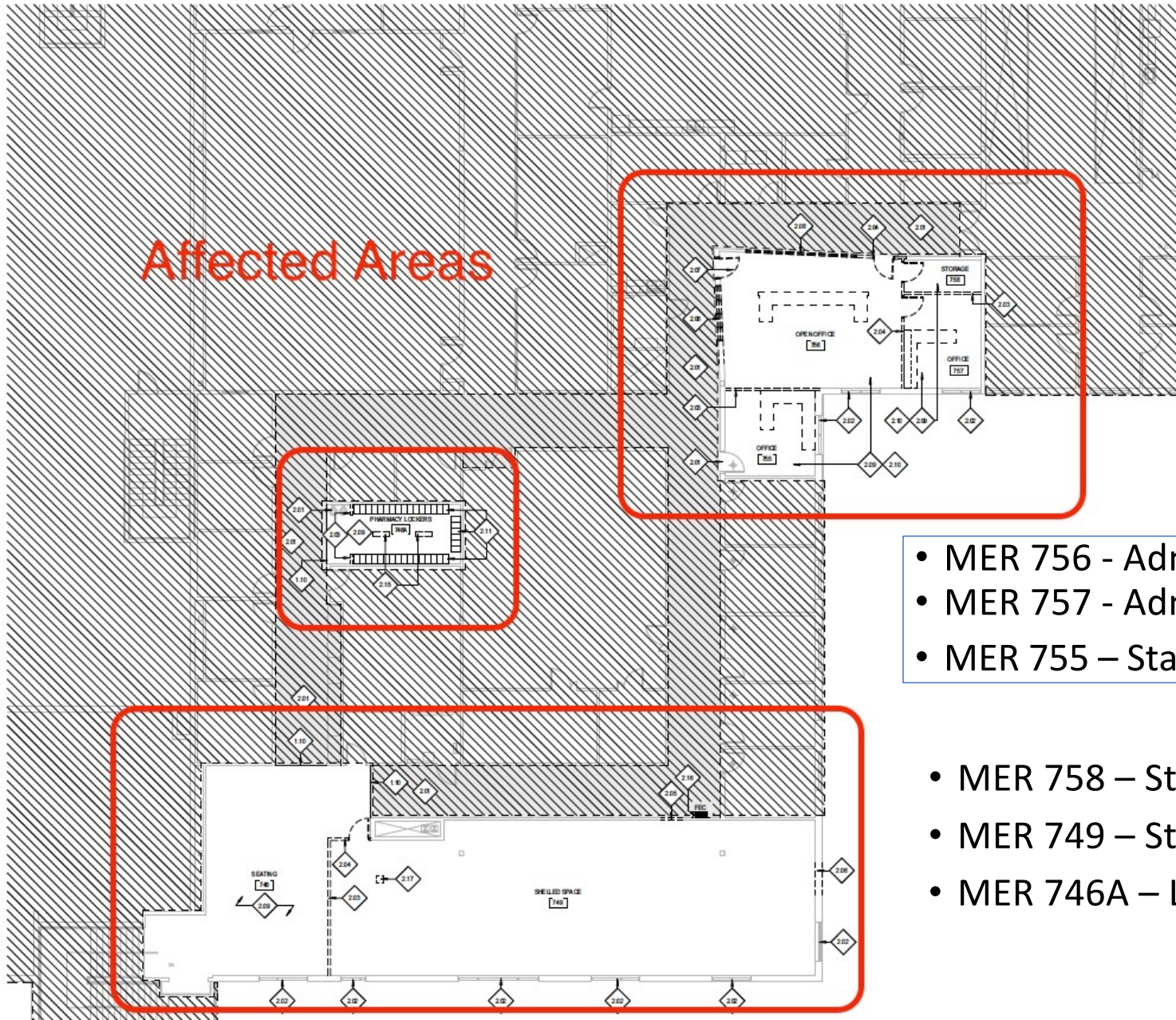
VALUES

- Safety
 - Organization
 - Cleanliness
 - Equitable
 - Professionalism
 - Pride
 - Unity
- 

Meridian Expansion Project Timeline



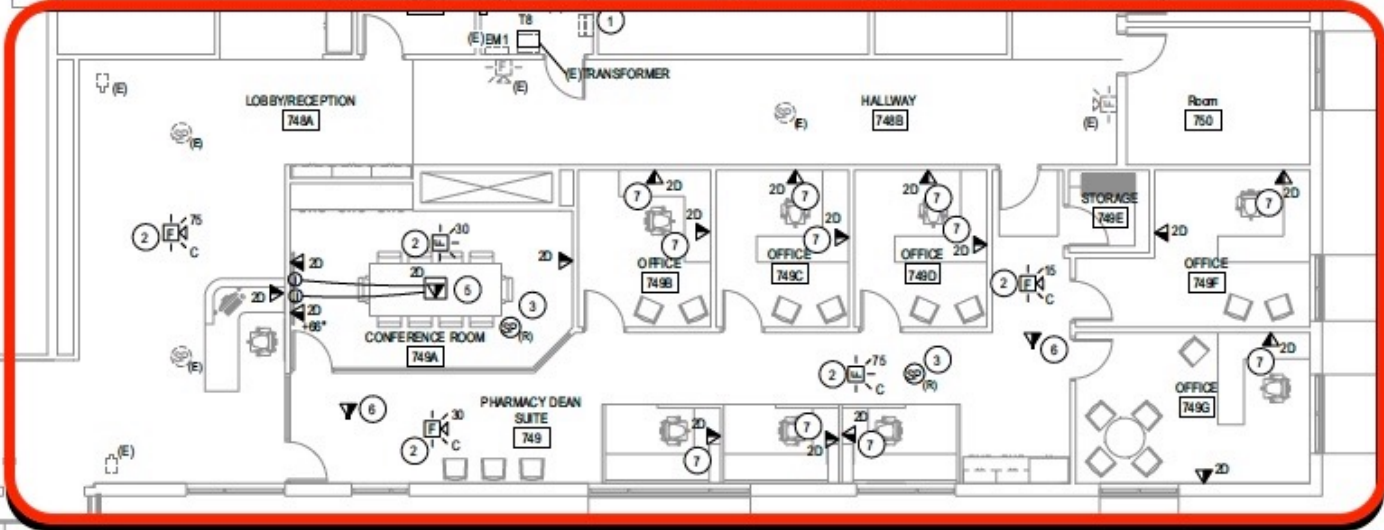
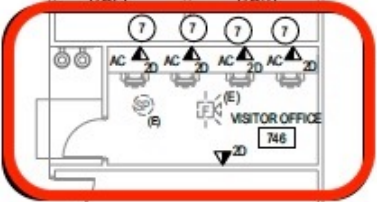
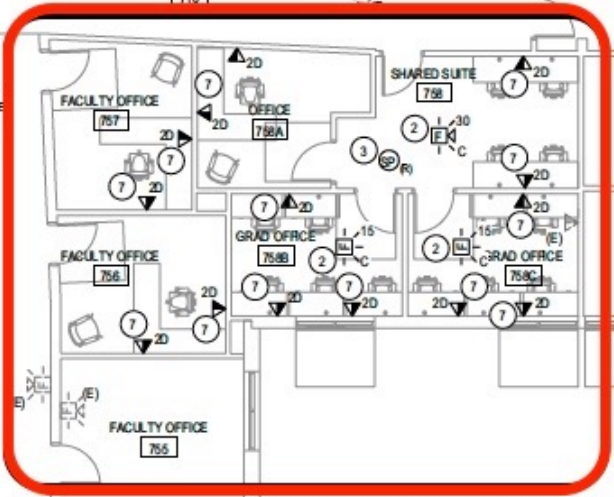
Affected Areas



- MER 756 - Admin Staff
- MER 757 - Admin Office
- MER 755 – Staff Office

- MER 758 – Storage
- MER 749 – Storage
- MER 746A – Lockers

Completion



Shop drawings for review and approval (NFPA 72)

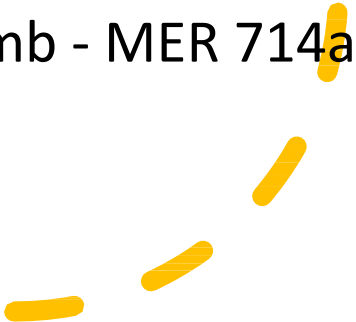


Staff

Work Areas

- Affected offices vacated by Dec 5th
- Direct supervisors to coordinate moving needs with Tom Wadsworth and Janet Renk

Temporary Office Assignments

- Admin Assistant - Janet Renk – MER 713
 - Admin Assistant - Shari Holcomb - MER 714a
 - Erin Colburn – MER 750
- 




Faculty

Work Areas

- Affected offices vacated by Dec 5th
- Direct supervisors to coordinate moving needs with Tom Wadsworth and Janet Renk

Temporary Office Assignments

- Barb Mason/Kailey Kendall – MER 733
 - Jen Adams – MER 712
 - Roger Hefflinger/Marvin Schulte – MER 714b
- 



Students

Classrooms

- Unaffected

Student Study Areas

- Back lobby near the stairwell area will be closed
- All other areas unaffected

Other Areas

- West entrance will be closed
 - Student lockers will be closed during construction
 - Lockers must be emptied by Dec 11th
- 