

**Idaho State**  

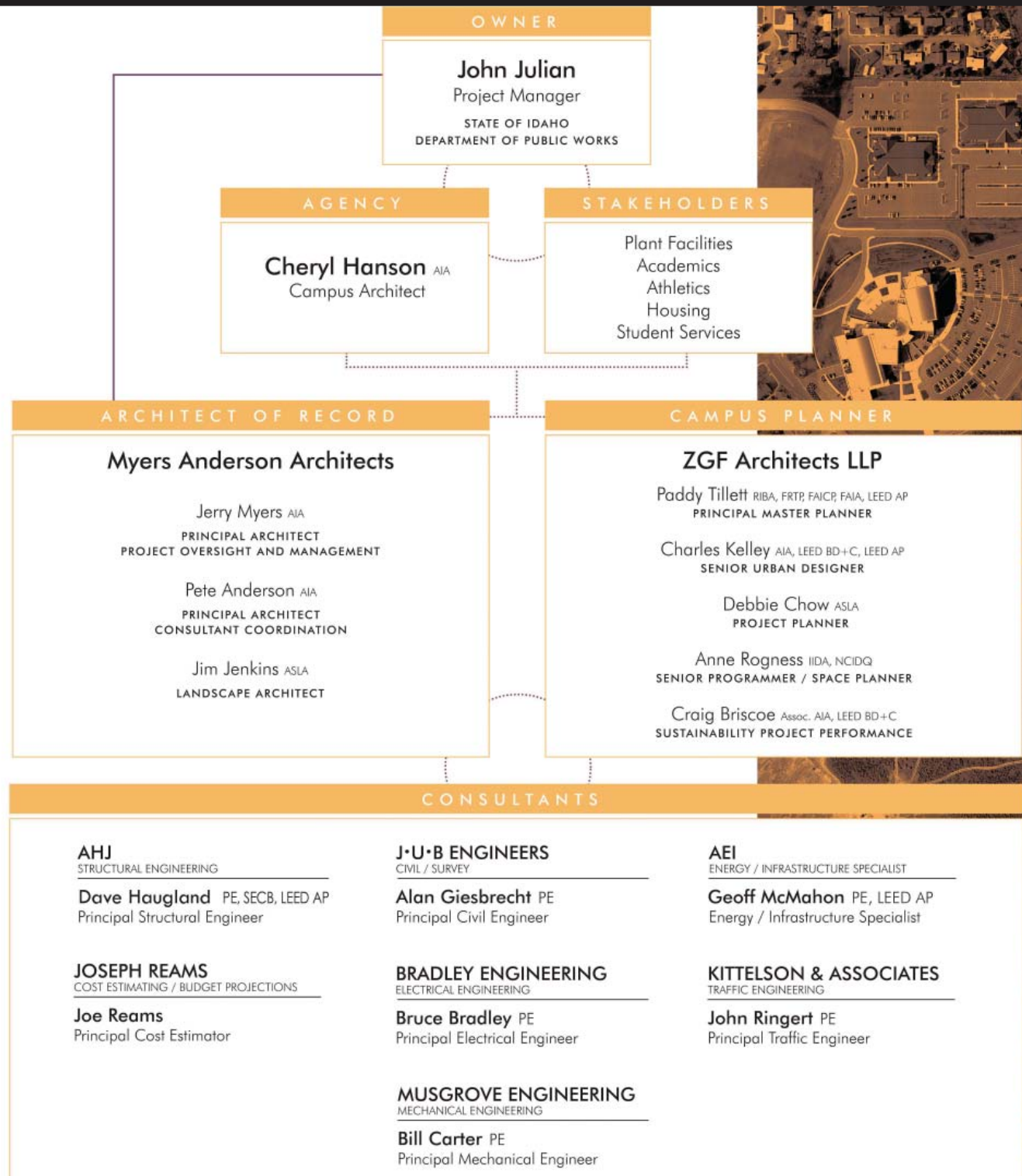
---

**UNIVERSITY**

# Campus Master Plan

Master Planning Underway  
2012-2013

# Master Plan Team



# Master Plan Steering Committee

<b>Ali Crane</b>	Director University Programs/ISU Meridian Enrollment & Student Services, and Staff Council President/Instruction & Academic Support Representative
<b>Randy Gaines</b>	<i>Chief Information Officer</i> , Information Technology Services (Its)
<b>Lynette Mitchell</b>	<i>Assistant Vice President</i> , Finance & Administration, and <i>Assistant Vice President</i> Academic Affairs, Office Of Provost
<b>Dr. Barbara Adamcik</b>	Interim Provost & Vice President , and <i>Professor</i> of Pharmacy Practice & Administrative Sciences- college of Pharmacy
<b>Craig Thompson</b>	<i>Director</i> Central Office University Housing
<b>Dr. Debbie Easterly</b>	<i>Director of Research Development &amp; Compliance, Principal Investigator/Project Director</i> WE LEAD, <i>Acting President/Treasurer</i> , ISU PROFESSIONAL WOMEN
<b>Douglas Milder</b>	<i>Director</i> , Campus Recreation
<b>Dr. Kent Tingey</b>	Vice President for University Advancement
<b>Dr. Laura Vailas</b>	Special Advisor for University Advancement
<b>Lonnie Crowell</b>	Director, City of Pocatello Planning & Development Services
<b>Lowell Richards</b>	<i>Executive Director</i> Student Union, and <i>General Manager</i> Associated Students Of ISU, and <i>Assistant Vice President for Student Affairs</i>
<b>Mori Byington</b>	Planning Director, Bannock planning
<b>Dr. Richard Jacobsen</b>	<i>Executive Director for the Office of Research &amp; Technology Transfer, and Associate Director</i> Center For Advanced Energy Studies (CAES), and <i>Professor</i> Nuclear Science & Engineering
<b>Shaun Stokes</b>	ASISU president
<b>Arlo Luke</b>	
<b>Carole Gull</b>	<i>Management Assistant</i> Office of Research
<b>Kc. Felt</b>	Director Alumni Relations
<b>Dr. Patricia Terrell</b>	<i>Vice President for Student Affairs</i>
<b>Charles Wheatley</b>	Alumni and Son of Jack Wheatley, landscape architect
<b>Cheryl Hanson</b>	Campus Architect, Director of Planning, Design, and Construction, Acting Vice President/ISU Professional Women
<b>Dr. Daniel Ames</b>	<i>Associate Professor</i> Geosciences
<b>Debbie Stone</b>	
<b>Jeffrey Tingey</b>	Athletic Director
<b>Joseph Han</b>	<i>Associate Vice President</i> facility services
<b>Karen Tolman</b>	<i>Administrative Assistant 2</i> , Office of the Registrar
<b>Dr. Laura Woodworth-Ney</b>	<i>Associate Vice President</i> Academic Affairs
<b>Dr. Linda Hatzenbuehler</b>	<i>Associate Vice President &amp; Executive Dean</i> Division Of Health Sciences
<b>Dr. Steven Byers</b>	<i>Chair/Professor</i> College Of Business
<b>Weston Whitworth</b>	<i>Senior Accountant</i> Finance & Administration and <i>Finance Representative</i> , Staff Council
<b>Matt Bloxam</b>	ASISU
<b>Evan Smith</b>	Instructor, Mechanical Engineering Technology, College of Technology
<b>Scott Turner</b>	Vice President, ISU Foundation /Development