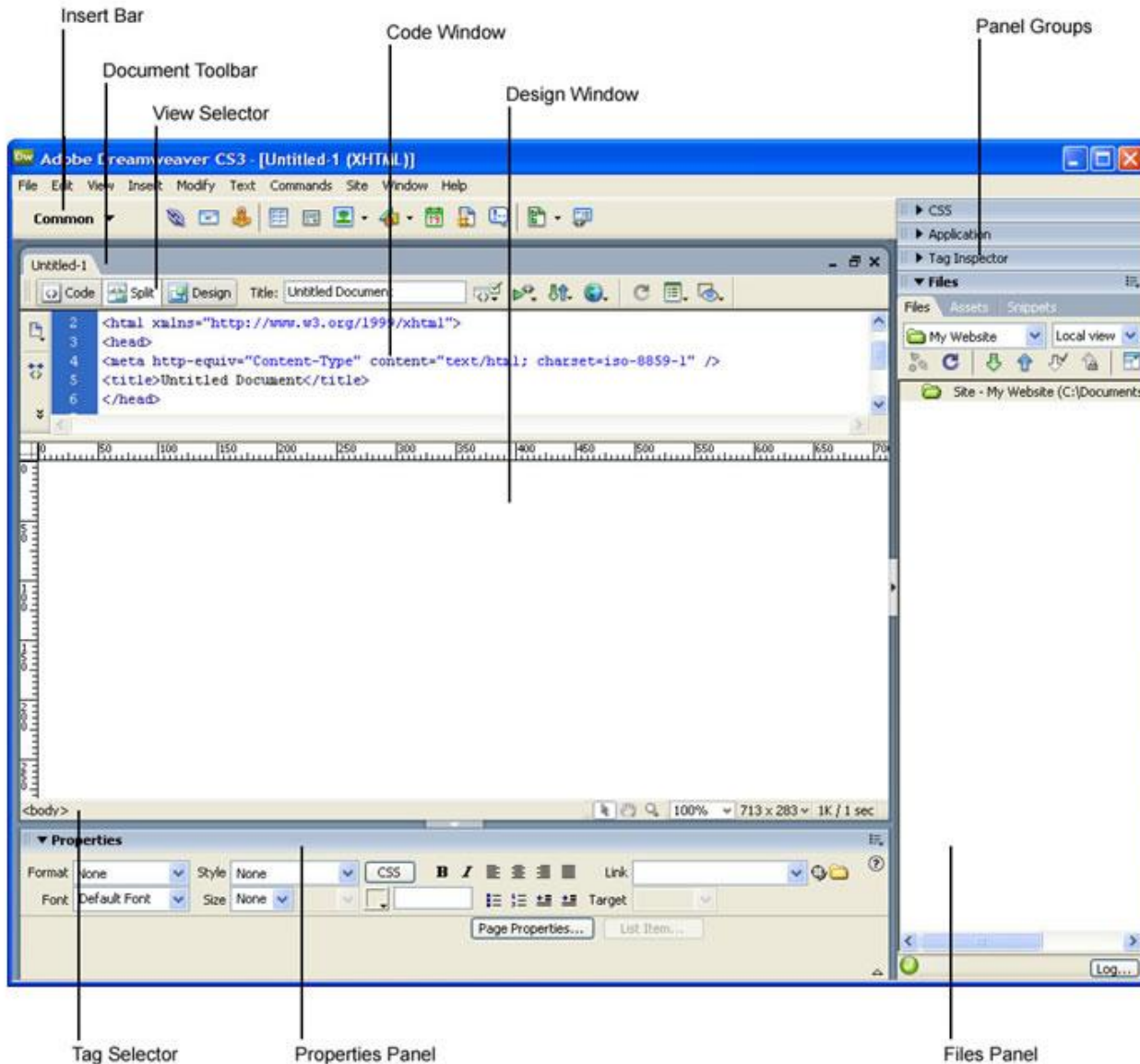


ITRC Guide

Introduction to Adobe Dreamweaver CS3

The Dreamweaver Workspace



The **Insert Bar** contains buttons for inserting various types of "objects," such as images, tables, and layers, into a document. Each object is a piece of HTML code that allows you to set various attributes as you insert it. For example, you can insert a table by clicking the Table button in the Insert Bar. If you prefer, you can insert objects using the Insert menu instead of the Insert Bar.

The **Document Toolbar** contains buttons and pop-up menus that provide different views of the Document window (such as Design view and Code view), various viewing options, and some common operations such as previewing in a browser.

The **Code Window** displays the HTML code for the current document as you create and edit it.

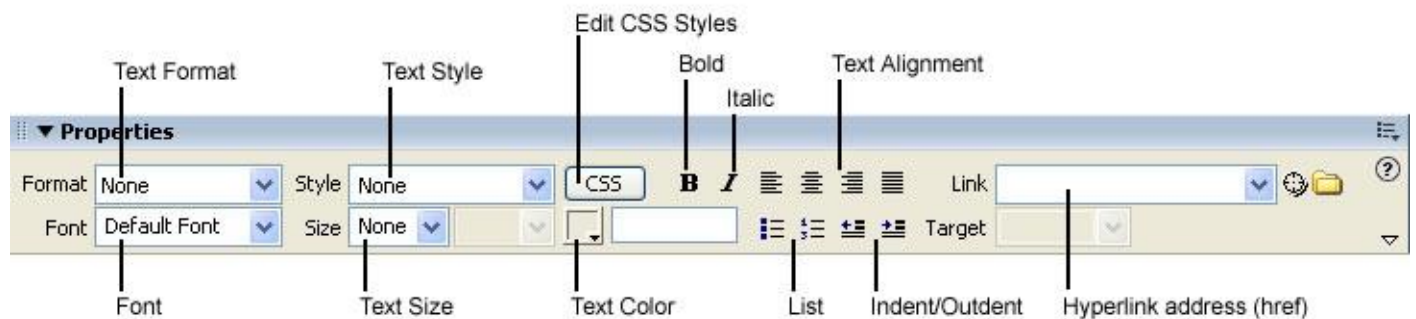
The **Design Window** displays the current document as it should look in a browser, as you create and edit it.

Panel Groups are sets of related panels grouped together under one heading. To expand a panel group, click the expander arrow at the left of the group's name; to undock a panel group, drag the gripper at the left edge of the group's title bar.

The **Tag Selector** shows you the HTML tags relevant to whatever is selected in the Document window. You can select other sections of the document by clicking on the tag names in the Tag selector.

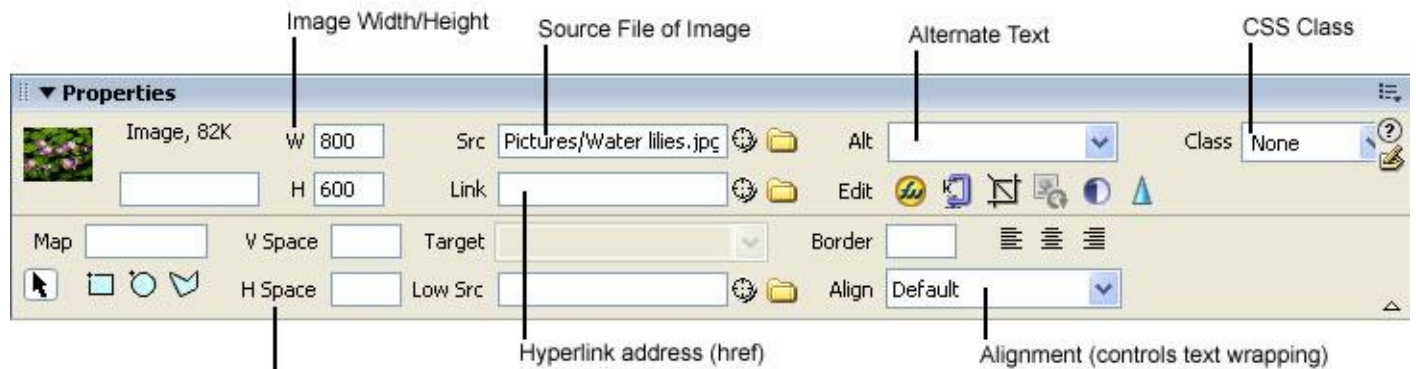
The **Properties Panel** lets you view and change a variety of properties for the selected object or text. Each type of object has different properties. The Properties Panel, by default, is located below the design area. It is one of the most commonly used panels within Dreamweaver. The option presented change based upon what type of object is selected with the Design Window. *If the Properties Panel is not in view, go to the 'Window' menu at the top of the screen and choose Properties from the menu (or Ctrl+F3).*

With a section of text selected in the Design Window, the panel displays the settings that can be used with text (pictured directly below), including: font, text size and color, attributes such as bold and italic, text alignment, etc. Also, this panel displays the hyperlink information associated with the selected text.



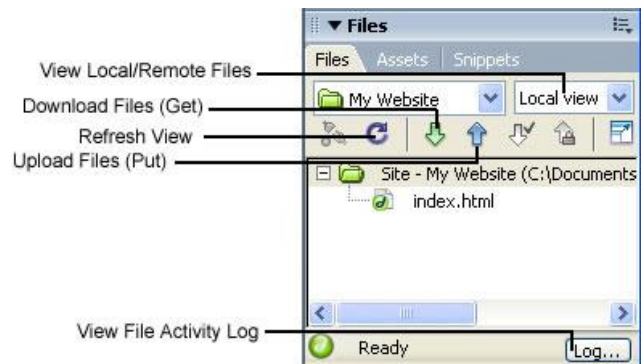
Properties Panel with text selected

The Properties Panel for an image is pictured below. With this toolbar, you can adjust the width and height of an image, change the hyperlink location associated with a particular image, as well as the alignment of the image within a page.

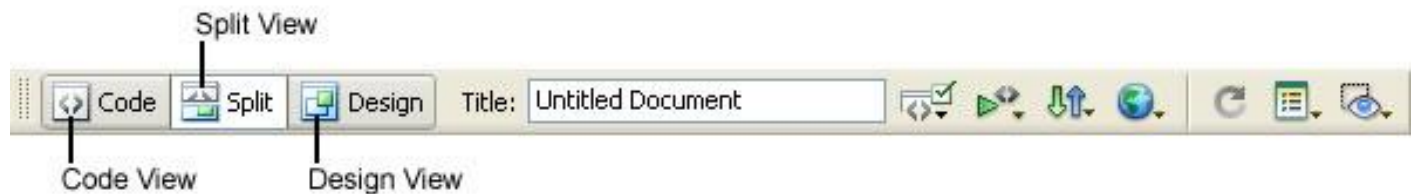


Properties Panel with image selected

The Files Panel (*right*) enables you to manage your files and folders, whether they are part of a Dreamweaver site or on a remote server. The Files panel also enables you to access all the files on your local disk, much like Windows Explorer (Windows) or the Finder (Macintosh).



The View selector (*below*) allows you to change the view settings. Three options are available: The **Code** view displays the actual HTML code associated with a page. This is useful for those developers who are familiar with HTML based coding. The **Design** view allows you to create a web page without worrying about the HTML code. The **Split** view allows you to view both the HTML code and the design of the page simultaneously. This view is extremely useful for learning the HTML language. You can make changes to your page in the lower design portion of the screen and then see how the changes affect the HTML code. *The view selector is located at the top left of the design window.*



Dreamweaver provides a variety of other panels, inspectors, and windows not shown here, such as the CSS Styles panel and the Tag inspector. To open Dreamweaver panels, inspectors, and windows, use the Window menu.

HTML and Dreamweaver

All HTML documents have a minimum structure of four tags. The first tag, `<html>`, tells a browser that it's reading an HTML document. The second tag, `<head>`, tells the browser where the header is located. The header provides document information, such as the document title, which appears in the browser window's document title bar. The `<title>` tag encloses the title of the document, and the fourth tag, `<body>`, encloses the body of the document. Most HTML tags require an open tag and a close tag in the form: `<tagname></tagname>`. Here's an example of a complete HTML document with a title and very brief body:

```
<html>
  <head>
    <title>
      Welcome to the ITRC
    </title>
  </head>
  <body>
    Body of document: can include hyperlinks, text, and images
  </body>
</html>
```

HTML Tag Examples	Resulting Text	How to accomplish with Dreamweaver
<code>Bold Text</code>	Bold Text	After selecting the text you wish to make bold, go to the Text menu, choose Style, and click on Bold
<code><i>Italic Text</i></code>	<i>Italic Text</i>	After selecting the text you wish to make italic, go to the Text menu, choose Style, and click on Italic
<code><h1>Heading 1</h1></code>	Heading 1	After selecting the text you wish to display as heading 1, go to the Text menu, choose Paragraph Format, and click on Heading 1
<code><h6>Heading 6</h6></code>	Heading 6	After selecting the text you wish to display as heading 6, go to the Text menu, choose Paragraph Format, and click on Heading 6
<code> List Item List Item </code>	<ul style="list-style-type: none"> List Item List Item 	After selecting the text you wish to display as an unordered list, go to the Text menu, choose List, and click on Unordered List
<code> List Item List Item </code>	<ol style="list-style-type: none"> List Item List Item 	After selecting the text you wish to display as an ordered list, go to the Text menu, choose List, and click on Ordered List
Use the anchor tag to create a <code>link</code> to another location, such as the ISU homepage.	Use the anchor tag to create a <u>link</u> to another location, such as the ISU homepage.	After selecting the text you wish to set as a link, type the web address (URL) that you'd like to link to in the "Link" area of the Properties Panel.



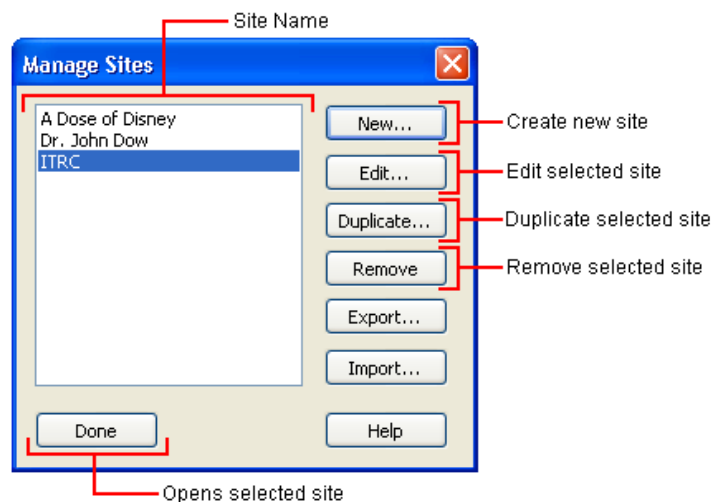
Use the image tag to include an image. <code></code>	Use the image tag to include an image.	Place the cursor at the location where you wish to insert an image. Click on the Insert Image button from the toolbar and select the location of the image file.
--	--	--

Setting Up Your Website

Before you build your website, it is important to set up your website using the Dreamweaver **Manage Sites** tool. From the Dreamweaver design window, go to the **Site** menu and click on **Manage Sites**. Once the **Manage Sites** dialog box appears click on **New**.

Choose the 'Advanced' tab at the top of the window. In this window, you will be able to specify the name of the site and the folder where the site will be stored locally. These settings are labeled as the **Local Info**.

Dreamweaver has a built-in FTP utility. To setup the FTP information for your site, choose **Remote Info** from the category menu, and then choose **FTP** from the pull down menu. In the FTP window, you will need to input the information regarding the web server where your website will be located. **FTP Host** is the first setting that should be specified. For most ISU accounts, the FTP Host is "cwis.isu.edu". If you are publishing to a



personal folder on the ISU web server, the **Host Directory** should be “./public_html/”. If you are maintaining a department website rather than a personal website, the Host Directory will be slightly altered. The **Login** and **Password** should be the corresponding username and password for the current website. For the ITRC Dreamweaver Workshop, we use the following settings.

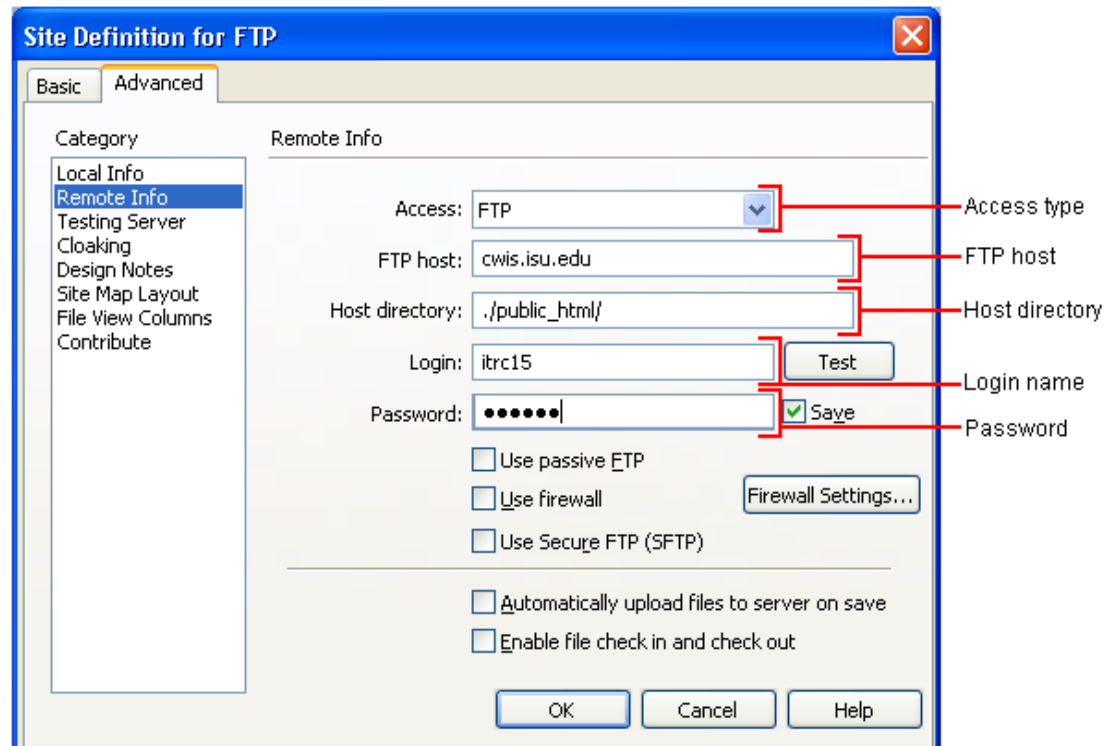
FTP Host: cwis.isu.edu

Host Directory:

./public_html/

Login: itrc15 (each user in the workshop has a specific login located on the front of each workstation)

Password: your workshop instructor will announce the password during the workshop



Additional Information about Adobe Dreamweaver CS3

- Dreamweaver CS3 help and tutorials from Adobe
<http://www.adobe.com/support/dreamweaver/>
- Adobe Dreamweaver CS3 and general Web Design Tutorials from Project Seven
<http://www.projectseven.com/tutorials/index.htm>
- Dreamweaver CS3 and Dreamweaver CS4 Tutorials from Sitebuilder
<http://www.sitebuilder.ws/dreamweaver/tutorials/>



Idaho State University
Campus Box 8064
Pocatello, ID 83209
208.282.5880

Copyright © 2009 by ITRC

This document may be reproduced for individual or nonprofit use. Users acknowledge that the manual, and all copyright and other intellectual and proprietary rights therein, are and at all times shall remain the valuable property of the author. Users agree to respect and not to alter, remove or conceal any copyright, trademark, trade name or other proprietary marking that may appear in the manual. Please send comments to itrc@isu.edu. For more information about the ITRC, visit our Website at <http://www.isu.edu/itrc>.