

ITRC Guide

Importing Questions Using the GIFT Format

Introduction

Importing questions into the Moodle question database allows instructors to create questions outside of Moodle and quickly upload them into the Moodle environment. Because the same questions can be used in multiple Moodle courses, the import function maximizes the instructor's time by expediting the process to import new questions into a course.

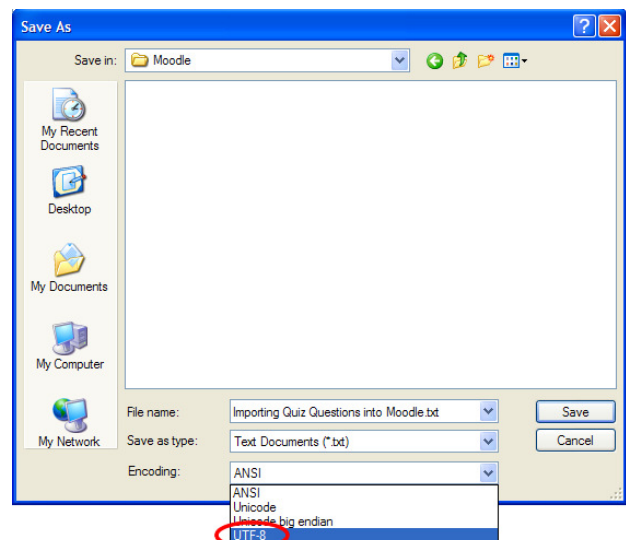
*Note: If you are **only creating multiple choice or true/false questions**, we recommend the use of the **Aiken format**, a more simple system.*

Importing GIFT Format Questions

What You Need to Know Before Importing Questions in GIFT Format

- GIFT supports a variety of question-types, including multiple choice, true/false, essay, short answer, matching and missing word.
- Multiple question types can be mixed in a single text file.
- There cannot be any blank lines within the text of a question. If you need a blank line to show within the question, use the entity (\n.)
- You can include comments wherever you deem necessary but they must begin with two forward slashes (//) at the start of the line.
- There must be a blank line between EACH question.
- These symbols ~ = # { } : are control characters and determine a question's formatting. They cannot be used as normal characters unless you indicate they are not to be read as control characters. The way to indicate these are normal characters is to insert a backslash (\) before a control character.
- Type your questions in a notepad and **save them in plain text format (extension *.txt)**. The text encoding of your text file **must be UTF-8**.
- If using a Macintosh computer the same can be accomplished using TextEdit. Please contact the ITRC for more information.

*When using Notepad (a word processor included with the Windows operating system), the encoding option will appear within the **Save As** window:*



Question Types in GIFT Format

Attributes Common to all GIFT Question Types:

Each type of question has two parts, question text and answer choices. Answer choices are always typed within a pair of curly brackets (i.e. {...answer choices...}). For all questions except Missing Word the answer choices appear after the question text. For Missing Word they appear at the location of the missing word (Note: the missing word cannot be the last word in the sentence).

The following is a brief discussion on the formatting of answer choices for each question type.

- **Multiple Choice (incl. True/False):** For **multiple choice** questions the brackets can contain an arbitrary number of choices. The correct answer choices are prefixed with an equal sign (=) and everything else is prefixed with a tilde (~). For **True/False** questions the brackets contain either a T or F indicating the correct answer.
- **Essay:** The brackets should be left empty ({ }).
- **Matching:** Matching pairs should begin with an equal sign and be separated by a dash and carrot (->). There must be at least three matching pairs.
- **Missing Word:** This function does not allow the missing word to be the last word in the sentence. To use this format, place the answers where you want the line to appear in the sentence (use the same format as Multiple Choice). The fill-in-the-blank line will appear automatically in the question.
- **Number:** The answer section for numerical questions must begin with the pound symbol (#). This question type can include an error margin, which must be written following the correct answer, separated by a colon (for example, if you have an answer that could range from 1.5 to 2.5, your answer should be written as {#2:0.5}). If no error margin is specified it is assumed to be zero. Answers can also be written as a range (this should appear as {#1.2 ... 2.9} to specify a range from 1.2 to 2.9).
- **Short Answer:** Answers in the short-answer question type are all prefixed by an equal sign. This means that the student **MUST** use one of the specified answers in order to get credit for the question. If you choose to accept an answer that you did not originally include in the question, you will have to manually re-grade that student's quiz.

The following chart provides a list of available question types and an example of how they should be written within the GIFT Format.

Question Type	Example Format
Multiple choice or True/False	Who's buried in Grant's tomb?{~Grant ~Jefferson ~George =no one} Washington was our first president {T}
Essay	Discuss the problems encountered when troubleshooting within Moodle. { }
Matching	Match each country with its capital city: { =Canada -> Ottawa =Italy -> Rome =Japan -> Tokyo =Pakistan -> Islamabad =India -> New Delhi }
Missing Word	The ISU mascot, a {~snake ~llama =bengal}, is named Benny and appears at all athletic events.
Number	Ray Tomlinson was the first man to send an email. This occurred in what year? {#1971}
Short Answer	Who currently uses the Oval Office? {=President Obama =President of the US}

GIFT Format Importing Instructions

1. Click on the link “Questions” under the Administration block. The Question Bank appears. *Note: In order to keep your questions organized, you can choose to create categories in which to keep your questions.*
2. At the top of the page, click the link that says “Import.”
3. From the File format section, select the GIFT format.

[Questions](#)
[Categories](#)
[Import](#)
[Export](#)

Import questions from file ?

File format

* ?

- Aiken format
- Blackboard
- Blackboard V6+
- Course Test Manager format
- Embedded Answers (Cloze)
- Examview
- GIFT format
- Hot Potatoes format
- Learnwise format
- Missing word format
- Moodle XML format
- Respondus QTI format
- WebCT format

General

Category ?

Get category from file Get context from file

Match grades ?

Stop on error ?

Import from file upload...

Upload (Max size: 20MB)

4. In the block that says “Import from file upload...” click . The “Browse” option will take you to the files on your computer. Navigate to the folder where your question file has been saved and click on its filename to select, and then click “Open.” When the filename appears in the “Upload” box, click .
5. The next screen will show that the questions and answers have been imported into Moodle. Click . Your questions are now in the Moodle question database!

For more information please see the teacher documentation at <http://docs.moodle.org>



Idaho State University
Campus Box 8064
Pocatello, ID 83209
208.282.5880

Copyright © 2010 by ITRC

This document may be reproduced for individual or nonprofit use. Users acknowledge that the manual and all copyright and other intellectual and proprietary rights therein, are and at all times shall remain the valuable property of the author. Users agree to respect and not to alter, remove or conceal any copyright, trademark, trade name or other proprietary marking that may appear in the manual. Please send comments to itrc@isu.edu. For more information about the ITRC, visit our website at <http://www.isu.edu/itrc>.