

ITRC Guide

An Introduction to Moodle for Students

Where Can I Find a Link to Moodle?

You can find a link to Moodle by going to the Idaho State University homepage (<http://www.isu.edu>), clicking on **Current Students**, and then clicking on the **Moodle** link underneath “Other Online Tools.”



Alternatively, you could type learning.isu.edu in your web browser.

Where and How Do I Get Help with Moodle?

Student Moodle documentation can be found at the [ITRC](http://www.isu.edu/itrc/) site (<http://www.isu.edu/itrc/>). To see what is available, go to the ISU homepage, click on **Faculty & Staff, Teaching and Advising, Instructional Technology Resource Center**, then on **Handouts**, then go to the “Moodle for Students” section.

ITRC
Moodle
Course Evaluations
Workshop Calendar
ITRC News Blog
Resources
Handouts
Equipment Checkout
About the ITRC
Educational Technology Services (ETS)
ISU Home

Other sources of information and help are:

- Moodle Student Guide (all students are automatically enrolled)
- Moodle Student Lesson (when it is made available by your instructor within your course)
- Your instructor
- The ITS Help Desk 282-HELP (for password and login issues)

Mozilla Firefox and Other Browsers

Mozilla Firefox is an open source browser recommended for Moodle and supported by the ITRC. If you don't already have Firefox installed, you can download it for free from: <http://www.mozilla.com/en-US/firefox/> (either Mac or PC versions) and click on the "Download Firefox – Free" link. When given the option to run or save, select save in order to download the installation file to the desktop. Once downloaded, double-click on the installation file to install. Other browsers may be used such as Internet Explorer, Netscape, Safari, etc. There are known problems with other browsers, so we strongly recommend using the Mozilla Firefox browser.

How do I Sign In and Out of Moodle?

To sign into Moodle, you will need to know your username and password. Your username is the same as the first part of your e-mail address. For example, if your ISU email is doejane@isu.edu, your user name is doejane. The password for Moodle ISU is the same as the password for your ISU email. If you have forgotten your password, you can look up the information in **My ISU** or call the help desk at 282-HELP (4357).

To log out, go to the upper right hand corner of the screen and click on **Logout** which is next to your name.

You are logged in as Abu Al-Khwarizmi (Logout)

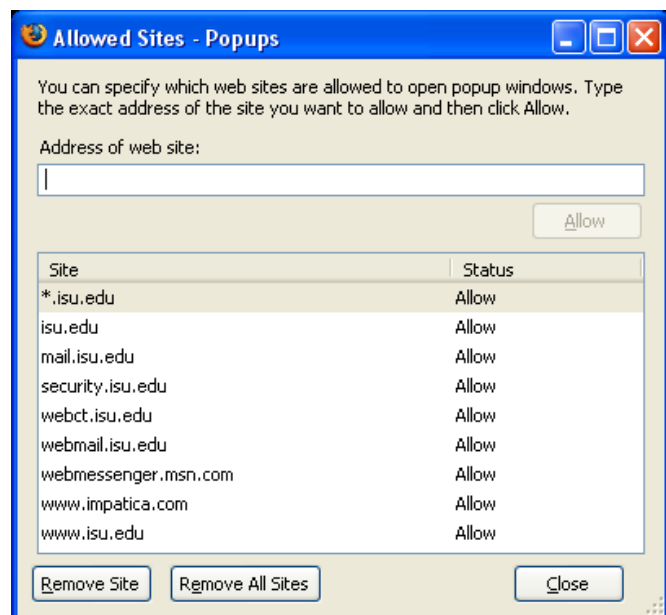
Why am I Having Problems with Moodle?

You might be having problems with Moodle if:

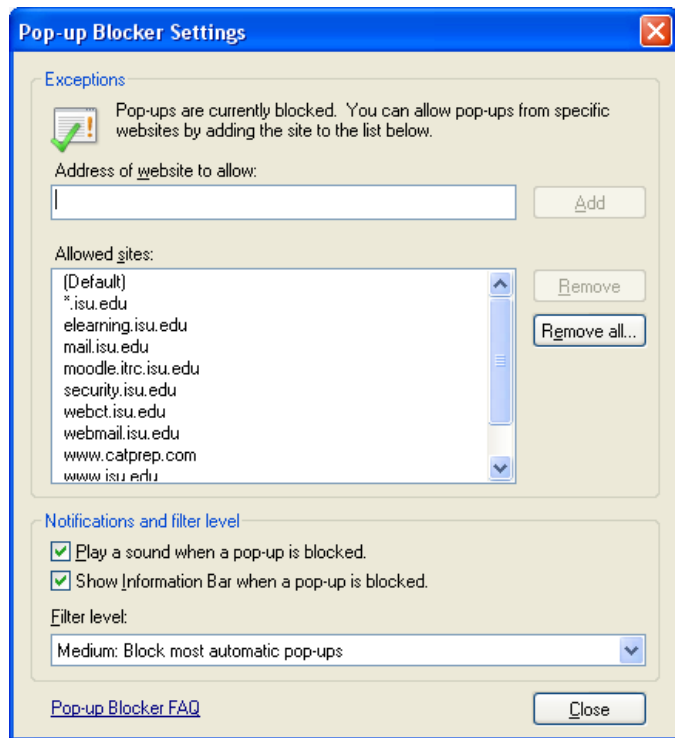
- Cookies are disabled.
- The pop-up blocker is blocking pop-ups from Moodle.
- JavaScript is blocked.

Moodle must have cookies and JavaScript enabled in order for you to log into Moodle. To enable cookies in Firefox, go to **Tools, Options, Privacy** tab, checking "Accept cookies from sites." Then, go to the **Content** tab and make sure that the "Enable JavaScript" option is checked. Click **OK** to accept any changes.

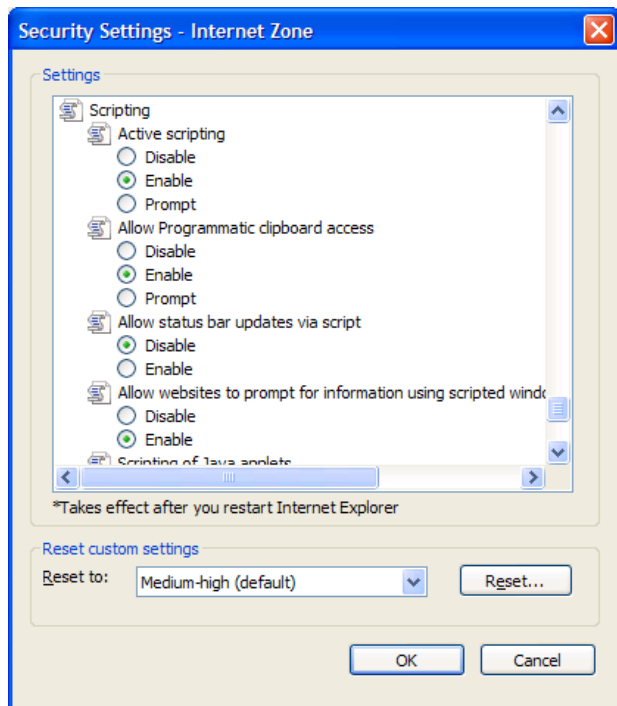
There are some functions in Moodle that require that the popup blocker is off. In Firefox, you can enable pop-ups from Moodle by going to **Tools, Options, Content**, and clicking on **Exceptions** (the first button from the top). In the **Address of web site** field, type "*.isu.edu" (without the quotations). Click **Close**, then **OK** to save and close the remaining window.



To enable cookies in IE, go to **Tools, Internet Options, Privacy** tab, click on **Sites**, enter “*.isu.edu” in the **Address of web site** field (without the quotations), click on the **Allow** button and then **OK**. To allow pop-ups, go to the **Pop-up Blocker** section (located below **Sites**), click on the **Settings** button, and add the “*.isu.edu” web address as the previous step.



To enable JavaScript, go to the **Security Tab**, click on the **Custom Level** button, and enable under the **Scripting** section (you will need to scroll down). Enable all options, click **OK**, select **Yes** to the question “Are you sure you want to change the settings for this zone?” and close the window.



Idaho State University
Campus Box 8064
Pocatello, ID 83209
208.282.5880

Copyright © 2009 by ITRC

This document may be reproduced for individual or nonprofit use. Users acknowledge that the manual, and all copyright and other intellectual and proprietary rights therein, are and at all times shall remain the valuable property of the author. Users agree to respect and not to alter, remove or conceal any copyright, trademark, trade name or other proprietary marking that may appear in the manual. Please send comments to itrc@isu.edu. For more information about the ITRC, visit our Website at <http://www.isu.edu/itrc>.