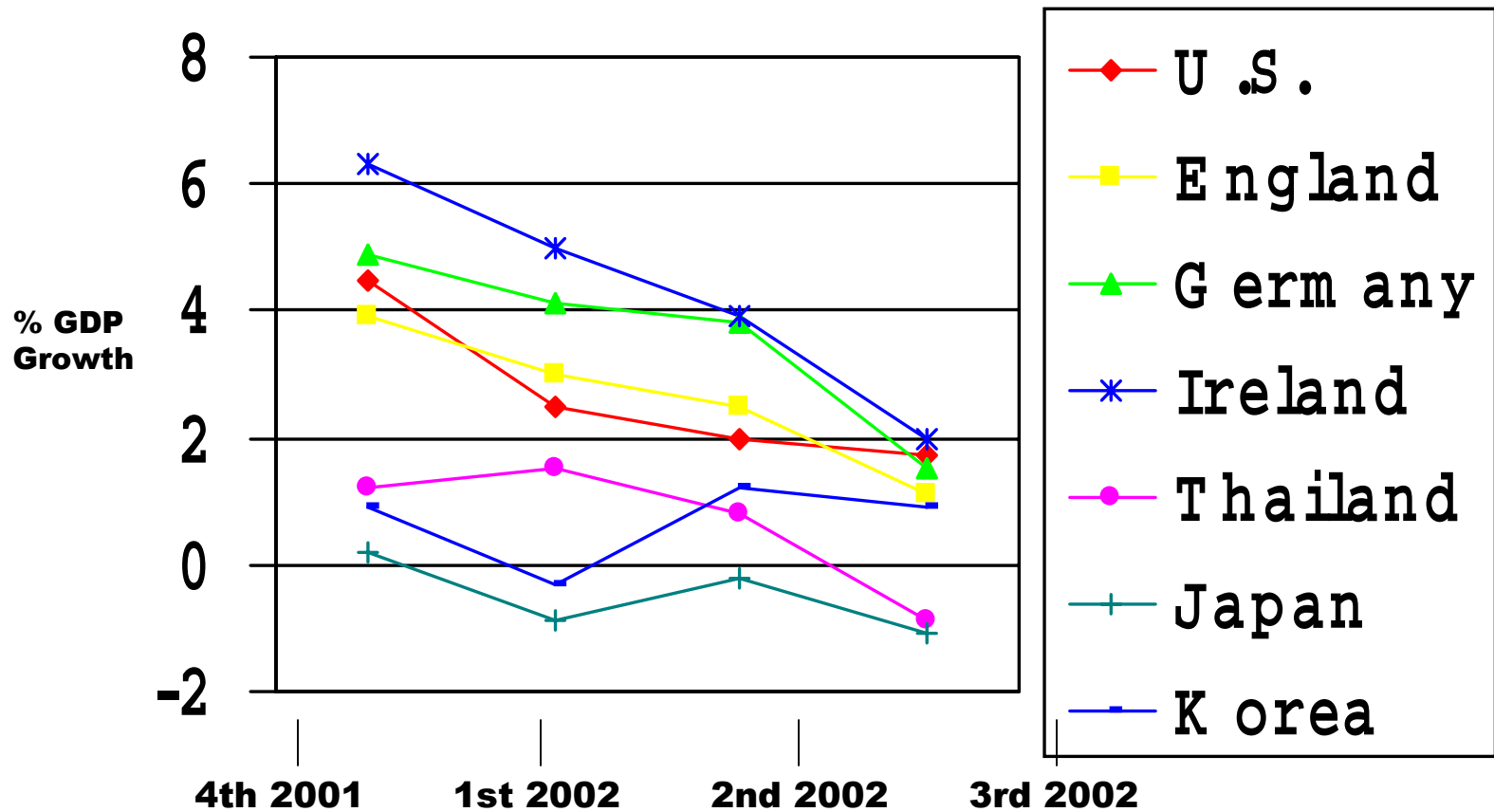
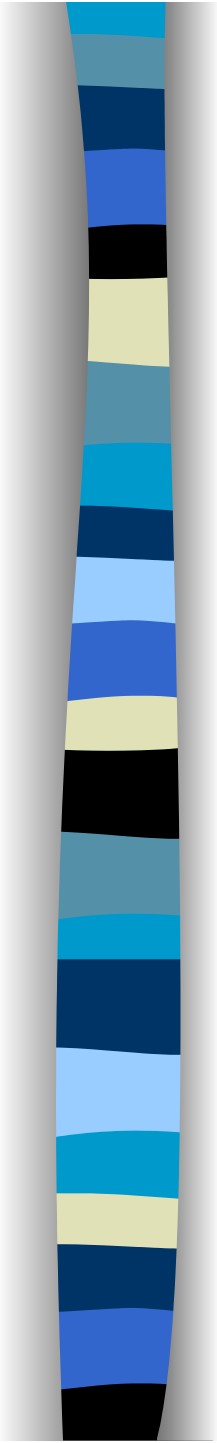


Line graphs are useful for showing changes in one or more variables over time.

Be careful to make them readable by limiting the number of lines. Often, one variable is “key” and therefore should be visually accented.

U.S. Slowdown Produces Downturns in Other Countries



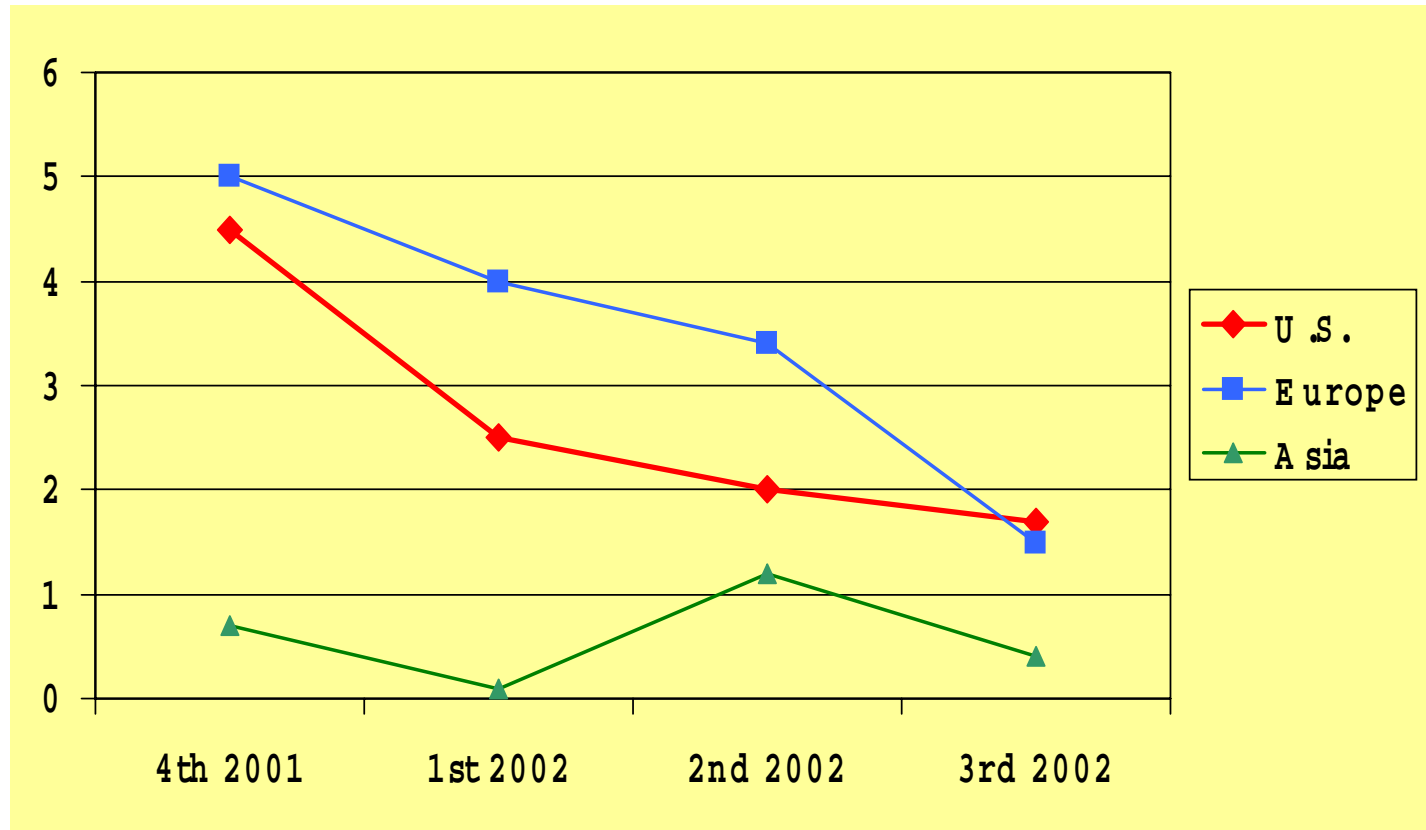


The previous graph has too many variables (lines), and the key U.S. line doesn't stand out.

Note the improvements in the following graph.

U.S. Slowdown Produces Downturns in Other Countries

**% GDP
Growth**



Europe = England, Ireland, and Germany
Asia = Thailand, Japan, and Korea