



News from Idaho State University

College of Arts & Sciences

A Rich Tradition of Academic Excellence

DEPARTMENTS • Anthropology • Art and Pre-Architecture • Biological Sciences
Chemistry • Communication and Rhetorical Studies • Theatre and Dance •
Economics • English & Philosophy • Foreign Languages • Geosciences • History •
Mass Communication • Mathematics • Music • Physics • Political Science •
Psychology • Sociology, Social Work Criminal Justice • PROGRAMS • American
Studies • American Indian Studies • Dance General Studies • International Studies •
MilitaryScience (ROTC) • Women's Studies

College
of Arts &
Sciences

ALUMNI
NEWSLETTER



Fall 2004
Volume 3 • Number 1

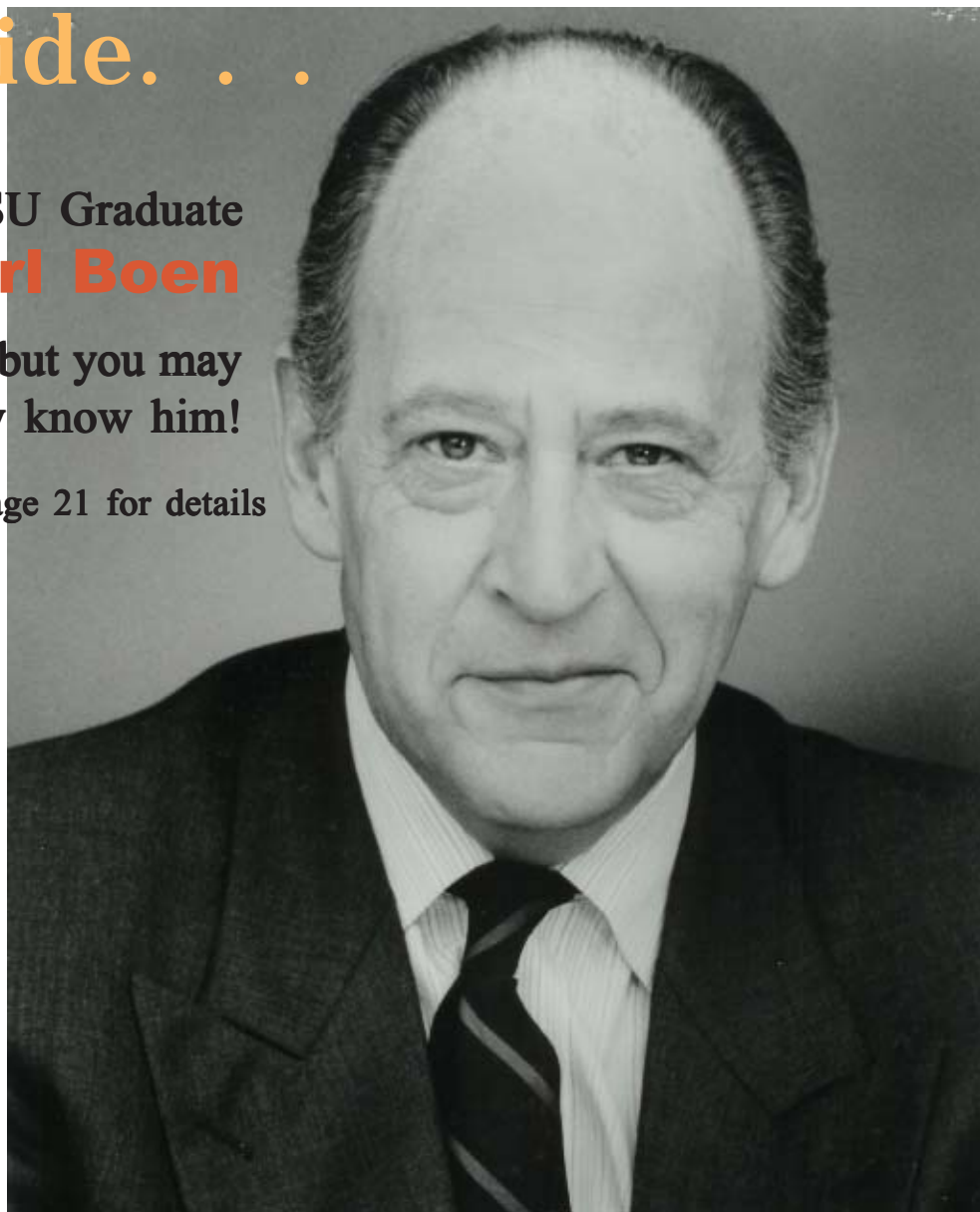
Campus Box 8087
Pocatello ID 83209
(208) 282-3204
artsci@isu.edu
www.isu.edu/artsci/

Inside. . .

Meet ISU Graduate
Earl Boen

. . . but you may
already know him!

See page 21 for details



Message from the Dean

Dear Alumni & Friends:



An old saying has it that we can be sure of only one constant—and that’s change. This is emphatically true of life within a vital educational institution such as the College of Arts and Sciences. One change that we experienced over the summer was the departure of our dean. Dr. James R. “Dick” Pratt, who led the College for two years, was recruited by Clarkson University in upstate New York to become the founding dean of a college of arts and sciences there. Dr. Pratt was thriving in his position at ISU, but the possibility of overseeing the creation of a new college at Clarkson was a once-in-a-lifetime opportunity he couldn’t turn down. He was an excellent dean, someone we’ll all miss. We wish him every success at Clarkson.

In last fall’s newsletter, I introduced myself to you as the then newly appointed Associate Dean of the College. I greet you now as the Interim Dean. At the risk of being redundant, allow me to introduce myself once again. My association with ISU has been long and varied, and stretches all the way back to the 70s. I received a DA degree in English at ISU in 1976. Starting in that year, I taught for several years at Lewis University in Illinois. Later, I earned a PhD in 19th-century British Literature at the University of Wisconsin-Madison and returned to ISU as an assistant professor in 1985. From 1995 to 2003 I served as Chair of the Department of English and Philosophy, and during the 2003-04 academic year I was Associate Dean of the College. As this record would suggest, I know from first-hand experience just how strong a faculty and student body we have in the College, and I’m honored that I have been selected Interim Dean.

Other changes have taken place in the College office. Dr. Tracy Montgomery, after serving as Assistant Dean for five years, decided to return to the English Department. Anyone who worked with her in the dean’s office will miss her intelligence, fair-mindedness, and good humor. Dr. Margaret Johnson, associate professor of English, has agreed to take her place. We also have a new Interim Associate Dean: Dr. Maureen Brandon, associate professor of biological sciences, has agreed to take this position for the current academic year. Four departments within the College have new chairs. Professor Gail Dial, after chairing the Art Department for many years, has decided to go on sabbatical and step down from administrative duties. We thank her for her years of service and welcome Rudy Kovacs as new chair. Professor Kovacs has taught art here since 1980. Dr. Terry Bowyer will chair the Department of Biological Sciences. He comes to us from the University of Alaska at Fairbanks. Dr. Rob Holman is the new chair of the Department of Chemistry. He left a position at Western Kentucky University to join us at ISU. Our Theatre and Dance programs, which had been housed in the Department of Communication and Theatre, have joined together to form a new department. Dr. Sherri Dienstfry, who has taught theatre at ISU since 1987, will chair this department.

Perhaps the biggest and most exciting change we’re looking forward to in the College is the opening of the L.E. and Thelma E. Stephens Performing Arts Center. Part of the building is already open and the Department of Theatre and Dance has moved in. Several events are scheduled for this fall. Theatre ISU’s production of “Man of La Mancha” will be held in the Bistline Family Thrust Theatre. It will run Oct. 15, 16, 21, 22 and 23. Classical guitarists Lou Johnson (an alumnus of the College) and José Luis Merlin will also be performing in the Bistline on November 9. The entire building is due to open late in January. We will have an opening event sometime in March which will showcase Arts and Sciences faculty and students. This building is, without a doubt, a world-class facility. It has been beautifully designed and constructed, and it will add a whole new cultural dimension both to ISU and to all of Southeast Idaho. I urge you to come to campus to visit this wonderful building that was made possible by the generous contributions of ISU alumni and friends.

I hope you will enjoy reading through this semester’s newsletter. As the articles in this newsletter indicate, the faculty and students of the College continue to build on a strong record of accomplishments. Please let us hear from you. Better yet, come and visit us at the College office.

Sincerely,
John L. Kijinski, Interim Dean
kijijohn@isu.edu

Table of Contents

Administrative Report
.....page 2

Development Update
.....page 5

Student Activities
.....page 7

Department News
.....page 8

Around Campus
.....page 20

Alumni Pages
.....page 20

The College of Arts & Sciences Alumni Newsletter is published twice a year for the benefit of the College’s friends and alumni. To include a submission, please contact the College of Arts & Sciences, Campus Box 8087, Pocatello, Idaho, 83209-8087, (208) 282-3053, or Email us at: arts@isu.edu

Faculty Notes

Outstanding Researchers Outstanding Researchers are selected based on the

significance of an individual's research in relation to the frontiers of knowledge in the field; peer-reviewed publications or related public presentations of research findings and their application and use by the discipline involved; evidence of development of the topic of research that resulted in a significant contribution; and additional relevant evidence of the research activity's outstanding nature.



Dr. Allen Christelow, professor and chair of history. Christelow's scholarly work deals with Islam in North and West Africa, a region largely ignored in Islamic studies before his work. He focuses particularly on legal institutions and intellectual and cultural history from 1800 to the present. Working with archives of legal records, Christelow's groundbreaking studies use court documents to "open windows on the mentalities and concerns of ordinary people and the values they held dear." Working primarily in Algeria and Nigeria, he is especially interested in the intersections of civilizations, as when pre-colonial life is transformed by colonial rule. Christelow is a founding member of the Association for Islamic Studies in Africa, which he serves as vice president. He has made numerous presentations, including international conferences in the Netherlands, South Africa, Jerusalem, Algeria, and England, and has published two landmark books and more than 30 articles. His work has led him to interest in issues of exile and asylum, and he is currently writing a book on the experiences of Algerians in exile.



Dr. Scott Hughes, professor and chair of geosciences. Hughes earned his Ph.D. from Oregon State University, where he did a landmark study of the Three Sisters volcanic field in the Oregon Cascades and groundbreaking work on the evolution of the moon. Since coming to ISU, most of his research has focused on the eastern Snake River Plain. His work includes study of the potential volcanic hazards and groundwater aquifer processes for the INEEL, and work on geochemical techniques and tectonism. Hughes considers chairing the 1999 Rocky Mountain Section conference of the Geological Society of America "one of my greatest contributions to scientific research in Idaho." The conference resulted in the Guidebook to the Geology of Idaho, which he edited. His work has been funded by such agencies as the NASA Idaho Space Grant Consortium, the Department of Energy, and the Idaho Department of Education. His most recent grant, funded by NASA EPSCoR, explores the use of satellite remote sensing for studying the morphology of volcanic centers and compares the Snake River Plain and Mars.



Dr. Bennett Palmer, assistant professor of mathematics. Palmer is an established leader in the study of geometrical aspects of surfaces, studying the stability, uniqueness, and classification of surfaces with certain specific properties, like constant mean curvature surfaces and Willmore surfaces. Palmer's work is especially impressive in light of his teaching load—courses ranging from elementary algebra for non-majors and mathematics for education and business majors to specialized graduate classes such as minimal submanifolds and the calculus of variations. He has been invited to present papers around the world, in countries including Germany, Spain, France, Belgium, Brazil, Chile, and Japan, and has published more than two dozen papers on differential geometry, mostly as a single author, in refereed journals in America, Europe, and Japan. "He is not that sort of mathematician who builds big theories," a Spanish reviewer notes, "but solves problems and proves theorems with deep observation and unique elegant ideas."

Master Teachers Master Teachers, chosen solely on the basis of teaching expertise, must be nominated by

members of at least two groups: students, faculty/staff, or alumni. **Gail Dial**, professor and chair of art and architecture. Dial has taught at ISU since 1974 and is longtime chair of the art and architecture department. In her philosophy of teaching, she writes, "For the last 30 years I have taught my love – jewelry design and metal smithing, as well as drawing, creative processes, and weaving. I have taught students of all ages and ability groups ... I believe in addressing each individual's own level of understanding of art and unique mode of expression." In addition to her own travels throughout the world researching metals, Dial doesn't keep her teaching in the classrooms but takes students who may never have been on a jet or outside the state of Idaho on field trips to Seattle, Bozeman, Mont., and Jackson Hole, Wyo., where they view galleries and visit artists in their studios. A student nominator writes, "Under (Dial's) guidance, I have found my voice in my art." An alumna and colleague writes, "She is patient, inspiring and extremely intelligent." "Research, current reports, and sketchbooks develop verbal and written skills that allow students to become professional artists," writes another alumna.

Outstanding Public Service Awards

Outstanding Public Service Award recipients are chosen solely on the basis of their public service activities. Nominations must come from one or more groups from students, faculty/staff or the public.



Dr. Doug Nilson, associate professor of political science. One of Nilson's supporters writes, "His early life service in the Peace Corps set the stage for the subsequent years of commitment to public service ... The strength of his commitment can partly be measured by listing the activities, but if you know the man you begin to measure his service by his idealism and his enthusiasm for helping others." Nilson says his "'twin' early commitment to overseas Peace Corps service was [his] assistance to anti-poverty agencies at the national, state, and local levels . . . running through this activity is a commitment to empowering people less fortunate than myself." He is a 10-year member of the international CIVICUS, addressing global civics issues, and is active in the Idaho-Ecuador Partners of the Americas. He was a founder of the Southern California Earthquake Preparedness project, has advocated environmental quality through the Sierra Club, and served on the Commission on Alternative Forms of County Government in Bannock County. He received 1996 and 1998 ISU Outstanding Public Service Awards.



Dr. Robert Tokle, professor of economics. Tokle's public service focuses on volunteer work with the ISU Federal Credit Union and the Idaho Credit Union League. Tokle notes, "credit unions are non-profit financial cooperatives that are run by an elected volunteer board." He was named 2001 Credit Union Volunteer of the Year by the Idaho Credit Union League and is currently a member of the Idaho Credit Union League's small credit union task force and chairs the ISU Federal Credit Union board of directors. A nominator writes, "Bob has unselfishly given countless hours of his time to become an integral (ISUFCU) board member, providing leadership and direction as board chair." Tokle also serves on the advisory board for the ISU Center for Economic Education, the Pocatello Campfire board of directors, and as a Campfire youth soccer coach. He reads weekly with first graders at the Holy Spirit Catholic Community School and is publicity director for the Sons of Norway Valhalla Lodge.

Faculty Senate

A "Turnover of Gavel" ceremony signifying the change in leadership of the Idaho State University Faculty Senate was held the end of June.

Out-going chair **Dr. Doug Nilson**, associate professor of political science, relinquished the gavel to **Dr. Peter Vik**, associate professor of psychology, who took over as chair July 1 and will serve through June 30, 2005.

"Over the past several years the chair of the Faculty Senate has assumed an increasingly visible role in internal ISU decision making and in higher education politics statewide," Nilson said. "The Faculty Senate is now a major source of policy initiative on campus and it is becoming more proactive, which pleases me very much."

Nilson and Vik worked together this year with Vik serving as vice chair.

"I am very appreciative for what Dr. Nilson has accomplished during the last year and I look forward to continuing on his line of effort as we face some of the same challenges and some new ones," Vik said.

The Chair attends summer and school year meetings of the ISU President's staff, the ISU Dean's Council, the State Board of Education and other decision-recommend bodies, and presides over the 28-member Faculty Senate.

Nilson will continue to work with the Faculty Senate as part of his post-chair responsibilities.

Development Update

Creating Legacies Exceeds Goal By Raising \$152.56 million

Idaho State University officials, supporters and friends celebrated the end of the institution's five-year Creating Legacies Campaign that came to an official close March 31 after raising \$152,560,165.

Included in that total was a newly announced gift of \$1 million by **Arlo and Jackie Luke** toward the completion of the L.E. and Thelma E. Stephens Performing Arts Center, the site of the press conference announcing the end of the campaign. Arlo Luke is the president and CEO of Varsity Contractors headquartered in Pocatello.

More than 76,000 gifts were pledged to or received by ISU during the institution's first-ever capital campaign, which exceeded its initial goal by more than \$50 million, the largest and most successful capital campaign for higher education in the Gem state's history.

"The ISU Foundation Office went out and found people who felt strongly enough about their positive experiences at ISU that they made significant contributions based on that feeling, and for them, this was sufficient reason to give generously to the institution," said Joseph Jensen, president-elect of the ISU Foundation.

With a few months left in the campaign, the total was \$127 million. At that time, campaign chairman **James E. Rogers** and his wife, **Beverly**, issued a challenge that if \$150 million could be raised, Rogers would add an additional \$2.5 million to the \$24.5 million he had already pledged.

In the last months of the campaign, an additional \$26 million in gifts and pledges was collected. During the final days of the campaign among those giving significant gifts were the Lukes, **Ted and Barbara Crumley**, **Joseph and Cheryl Jensen**, **Jerry and Elner Bellon**, **Joseph and Melba Carlson**, **Lee Jacobsen**, **Bob and Diane Johnson**, and **Gary and Nancy Campbell**.

"ISU is one of the great joys of our lives," Rogers said. "We couldn't be happier that our challenge has been met. The success of this campaign is good for everybody."

"The Centennial Campaign is concluding, but our development efforts have really just begun," said **Pauline Thiros**, ISU development director.

"The campaign helped identify alumni and friends who wish to support ISU for many years to come. There are many projects yet to pursue for the benefit of the University, its students and faculty, and the Pocatello community."



Pauline Thiros



*The Announcement was made at the site of the **L.E. and Thelma E. Stephens Performing Arts Center**, the most visible result of the historic campaign.*

ISU's capital campaign has raised nearly \$30 million of the \$35 million needed to build the structure, which will be completed within a year.

The Stephens Center will include the state-of-the-art Joseph C. & Cheryl Jensen Grand Concert Hall, the Bistline Thrust Theatre, and the as-yet unnamed experimental Black Box Theatre, as well as classroom space, rotunda reception area, costume design shop, set and scene design shops.

Funds raised for the Stephens Center represent only 20 percent of the total amount raised during the campaign: more than \$65 million has been raised for scholarships and more than \$53 million has been raised for academic enhancements.

“The challenge for us is to continue to go out and find all those individuals who will continue to support ISU, not only for projects like the Performing Arts Center, but to also strengthen our faculty by improving their conditions and doing all those things that, unfortunately, just take money to accomplish,” Jensen said.

Scholarship donations have ranged from \$10 and \$15 pledges during various ISU scholarship phonathons to the \$10 million for scholarships given to the College of Business by an anonymous donor, and the \$500,000 scholarship donation from **Jon and Karen Huntsman**. Jon is a native of southeast Idaho who heads the Huntsman Corp.



Other major scholarship donations include the **Donald L. and Helen Doering Nielson** Endowed Fellowship, established in 2001 with an initial donation of \$100,000. This endowment provides fellowships to Native American students at ISU. **Peter C. and Nancy Kole** have established six fully endowed, \$50,000 scholarships in the College of Education and College of Business during the campaign.

Gary and Nancy Campbell's gifts total \$150,000 and include scholarships in the College of Education and College of Business.

Academic enhancements have been many. Some highlights include:

- * The naming of the **James E. Rogers** Department of Mass Communication, after Rogers gave ISU more than \$20 million.
- * The naming of the Kasiska College of Health Professions after the Kasiska Family Foundation gave and pledged more than \$16 million to that college's programs.
- * **Michael and Maureen Ruetters** gave the ISU College of Business \$5 million to support the information technology program and \$1 million for the Stephens Performing Arts Center.
- * The \$500,000 **G. Nicholas and Sara Ifft** Speech Communication Laboratory established in 1999 by the late Pocatello newspaper publisher and his wife, Sara.
- * The **James M. and Sharon E. Rupp** Debate Society was funded by an initial endowment donation by the Rupps and is now receiving additional funding annually from Associated Students of ISU. The endowment has helped created one of the top college debate programs in the country.
- * Seeley/Kole Faculty Resource Room and Smart Classroom in the College of Business funded by a \$125,000 gift from **Peter C. and Nancy Kole**.

Another major gift was made by **Mrs. Joyce Seppi**, a longtime supporter of Idaho State University through gifts to the Bengal Foundation and the ISU Foundation, who most recently completed a \$125,000 gift to the ISU Foundation to support the planned alumni center. The gift will name the center's library in honor of **Dr. Leno D. Seppi**, Joyce's late husband.

For more information on the ISU Foundation activities, call 208-282-3470.

Student Activities

Four Arts & Sciences Students Receive Outstanding Student Achievement Awards

Four students in the College of Arts & Sciences received the 2004 Outstanding Student Achievement Awards in April at a dinner hosted by the ISU Ambassadors and ISU Alumni Association.

Criteria for selection include a minimum 3.5 grade point average; above average dedication to academic and educational goals, including internships, special projects and papers; and involvement in professional societies. Where appropriate, work experience and community service are also considered. The students will lead their respective colleges in the commencement procession.

The recipients are Tyler Baker, College of Arts and Sciences, natural sciences; Amy Jarchow, graduate school, doctoral program; Nikki Mull, College of Arts and Sciences, fine arts and humanities; Derid Ure, College of Arts and Sciences, social sciences.

Tyler Baker, Pocatello, biochemistry major: Baker grew up in Pocatello and graduated from Pocatello High School as co-valedictorian in 1997. Baker will graduate from ISU with a double major in biochemistry and economics and plans to attend medical school, where he will study for a specialty in family medicine. Baker has tutored biology, mathematics and economics students, and graded papers for the mathematics and P.I. departments. He has conducted research in chemistry and economics as well.

Amy Jarchow, Portland, Ore., clinical psychology major: Jarchow came to ISU in 1999 to study clinical psychology and is completing her pre-doctoral internship at the Portland, Ore., Veterans Affairs Medical Center. She will obtain her Ph.D. in clinical psychology in August. Jarchow's studies have earned her the honor of being a published author in a peer-reviewed publication. She has another paper under review for publication and has multiple conference presentations of empirical data at competitive conferences, such as the Association for the Advancement of Behavior Therapy.

Nikki Mull, Pocatello, fine arts major: Valedictorian of her graduating class at Butte High School in Arco, Idaho, Mull has received a number of scholarships at ISU. She maintained her impeccable academic record throughout her college career, while also working part-time jobs. Nikki's work primarily features female figures, and her style reveals influence by masters like El Greco and Gustav Klimt.

Derid Ure, Aberdeen, economics major: Ure graduated from Aberdeen High School in 1996, then attended BYU-Idaho and served an LDS mission in Alabama. After receiving his bachelor's degree in economics in May, Ure will move to San Francisco with his wife, Rachel, and will attend dental school. A first generation college student, Ure has excelled in his academic career. He was 2001 BYU-Idaho Economics Student of the Year and was awarded the full-tuition Dr. Michihide D. Totoki Scholarship in both 2002 and 2003. He also received a Jack Kent Cook Foundation graduate scholarship worth up to \$50,000 for up to six years (see related article on page 13).



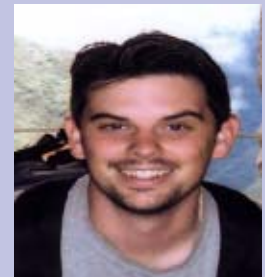
Tyler Baker



Amy Jarchow



Nikki Mull



Derid Ure

Department News

Anthropology

ISU Anthropologist Helps Save Native Languages

Idaho State University anthropology professor **Dr. Christopher Loether**, who specializes in the Shoshoni language, has been hired for 18 months to help save the language of the Serrano Indians living in southern California on the San Manuel and Morongo Reservations.

Loether is building on work done by University of California-Los Angeles professor Dr. Ernest Siva, a member of the Morongo Indian tribe who is half Serrano and half Cahuilla. Siva, a Serrano speaker, has worked with the Morongo and San Manuel bands of the Mission Indians for many years.

“Basically, there are only three people left who speak the language,” Loether said. “The last woman who spoke only the Serrano language, who was in her 90s, died last year, but we have a lot of material collected from this woman, Dorothy Ramon, who was Siva’s aunt.”

The San Manuel Reservation is located in the foothills of the San Bernardino Mountains, just north of the city of Highland, and occupies 740 acres. About 68 adult and 129 children are tribal members, according to Loether. The 32,000-acre Morongo Indian Reservation is set near the base of the San Gorgonio and San Jacinto Mountains. Tribal membership is about 1,200, according to Loether.

Loether will first learn the Serrano language, then train teachers to teach the language in schools. The language will be taught to pre-school children next fall, then to successively higher grades each year. Loether will also assist Siva in teaching the Serrano language in classes at UCLA next fall. The university will begin offering a two-year certificate in Serrano culture and language.

The Serrano Indian language is a member of the Uto-Aztecan language family, the same as Shoshoni. Paiute is also a member of that language family. Loether learned the Western Mono language while earning his bachelor’s, masters and doctoral degrees in anthropology at UCLA. He learned the Eastern Mono language while working on a project in the Owens Valley in California.



Art & Pre-Architecture

Kovacs Takes Over as Chair of the Art Department

Beginning this fall, **Rudy Kovacs** will take over for **Gail Dial** as Chair of the Department of Art and Pre-Architecture. Gail stepped down as chair after more than 20 years and is currently on sabbatical this semester studying in Italy.

“I am so pleased to be the chair of the art department. I am really looking forward to working with the faculty, students, and alumni to move the department into the future,” Kovacs said. “I look forward to the challenges and the rewards that come with this position.”

Rudy Kovacs has been a professor of art at Idaho State University since 1980 and teaches weaving, papermaking, and the survey of art. He was the recipient of the Distinguished Researcher award in 1991. Kovacs has an MFA from the University of Kansas/Lawrence, and he views his work as a visual journey of places, feelings, and spirit. His recent work uses jacquard looms in combination with digitized photographs to create recreational woven imagery. Kovacs has exhibited, lectured, and taught nationally. His research has taken him to the Montreal Centre for Contemporary Textiles, Fondazione Arte Della Seta Lisio and the Singapore Tyler Print Institute. Kovacs taught at the Penland School of Crafts—a national center for craft education located in the North Carolina mountains—for many years where he served as the fiber studio director.

One of his pieces was recently featured in “The Nature of Craft and the Penland Experience,” a publication marking the 75th anniversary of Penland. The piece was entitled *Cage Letter #2* and is made of linen, rayon, gold leaf, and paint. It was created in 1993 and is in the permanent collection at Boise Art Museum.



Cage Letter #2

Biological Sciences

In Brief - Faculty Update by Richard Inouye, Interim Department Chair

As you may know, our Department has experienced a period of higher than average turnover in our faculty. This has resulted from retirements and from faculty taking positions at other institutions.

Dr. Margaret Ptacek and **Dr. Michael Childress** left ISU in spring 2002 and moved to South Carolina. Margaret is an Associate Professor in the Department of Biological Sciences at Clemson University, and Michael is an Adjunct Assistant Professor in the same Department.

Dr. Eddie Johnson left ISU in spring 2002 to join the faculty at Central Oregon Community College in Bend, Oregon.

Dr. Jim Moodie left ISU in spring 2002 to join the faculty at Central Oregon Community College. We have been unable to replace Jim because of budget cuts; however, we believe it will be very important to hire someone to assist with heavy load of undergraduate advising that Dr. Rod Seeley has taken on.

Dr. Sharolyn Belzer left her position at ISU in spring 2003 but has remained in Pocatello. Sharolyn is co-PI with Rosemary Smith on the NSF-CCLI grant that was funded for 3 years (July, 2003-June, 2006).

Dr. Mary Poulson left ISU in spring 2003 to join the faculty at Central Washington University, where she is teaching courses in Plant Biology, Plant Physiology, and General Biology.

Dr. Dick Spall 'retired' in spring 2003, but he has yet to turn down a request to help teach a class (no surprise there). Dick spent time in Africa earlier this year, and he plans to devote more time to research than he was able to before he retired.

Dr. Wayne Minshall retired at the end of the fall 2003 semester, but he continues to contribute to the Department, advising graduate students, serving on graduate student advisory committees, and working on his many research projects.

Dr. Maribeth Watwood and **Dr. Stefan Sommer** left ISU to join the faculty at Northern Arizona University in fall 2003.

Maribeth still has graduate students completing their degrees at ISU, and is continuing collaborations with two of our faculty.

Dr. Larry Smith left the Department last fall for a position at Utah State University. His position at USU, which has significant administrative responsibilities, allows him to stop commuting to Pocatello from Utah 4 days a week.

Dr. Joseph Cook, who joined our Department several years ago as Chair, left in November for a position at the University of New Mexico. That position put him close to family in New Mexico, and provides him an opportunity to pursue his interest in museum collections.

Dr. Ron McCune will retire at the end of this semester. Although he will no longer teach biochemistry, Ron does plan to help with the transition to a new Chair of the Health Professions Advisory Committee so we can maintain our outstanding record of placement in health professional schools.

Dr. Ed House has served as the Dean of Graduate Studies and Research, Dean of Research, and now as ISU Chief Research Officer for more than 15 years; however, he has remained a faculty member in Biological Sciences. Dr. House retired this summer.

Although we're sad to have valued friends and colleagues leave the Department, it's exciting to be able to attract strong new faculty who will bring their own particular mix of teaching and research interests.

Dr. Marjorie Matocq joined our faculty in fall 2002. Dr. Matocq's research interests include molecular evolution and biogeography.

Dr. Jim Groome joined our faculty last fall to support programs that require neurobiology.

Dr. Mike Thomas was hired with funds from a large NIH bioinformatics grant.

Dr. Paul Beardsley, currently at Colorado College, has been hired to support the Doctor of Arts program. Dr. Beardsley has research interests in biological education and in plant biology and systematics.

Dr. Terry Bowyer, currently at U. Alaska Fairbanks took over as Chair in August 2004.

Dr. Gary TenEyck will be moving to ISU from the Biopsychology Area in the Dept. of Psychology at the University of Michigan.

Dr. Shawn Bearden, currently at the John B. Pierce Laboratory, New Haven, CT, will fill the position vacated by Larry Smith. Dr. Bearden works on interrelations between cardiovascular and neuromuscular systems, with an emphasis on skeletal muscle blood flow.

Dr. Colden Baxter will join our faculty in December. Dr. Baxter, currently a post-doc at Colorado State University, is a freshwater ecologist and comes from the same doctoral program as Ken Rodnick.

Dr. Susan Kralian has been hired as an Assistant Lecturer and will help cover an expanding Anatomy and Physiology curriculum.



Dr. Linda DeVeaux

Biological Science and Accelerator Research Converge at ISU

Biological science and accelerator research are converging at Idaho State University where **Dr. Linda DeVeaux** is firing accelerator beams at yeast cells and other simple organisms to study the effects of radiation.

DeVeaux, a research assistant professor with the ISU Idaho Accelerator Center and affiliate faculty member in biological sciences, is conducting research at the IAC, a facility more often linked to pure physics, as well as applied nuclear and radiation research.

The IAC's accelerators, however, are proving to be invaluable to DeVeaux's and other biologists' studies of living organisms.

DeVeaux's findings, which she has presented as far away as Australia at the 12th International Congress of Radiation Research last year, have a wide variety of implications, from the understanding of cellular evolution and cell communication, to yielding new avenues of exploration for pharmaceutical and cancer research.

*Biological
Science*

Ron and Joan McCune Receive Sigma Xi Award



The Idaho State University chapter of Sigma Xi scientific research society has selected ISU emeriti professors. Joan and Ronald McCune as co-recipients of the 2004 Jerome Bigelow Award. The award was created in honor of a longtime ISU chemistry professor who was not only an exceptional teacher, but also strongly supported research in all scientific disciplines.

Joan McCune, professor of microbiology, who retired from ISU last year, was raised in Montana and earned her B.S. degree from Montana State University, her M.S. from Washington State University, and her PhD from Purdue. She was a postdoctoral fellow at UCLA. She has been president of the intermountain branch of the American Association for Microbiology, president of the Idaho Academy of Sciences, and president of the ISU chapter of Sigma Xi.

Ronald McCune was raised in Kansas and earned his B.S. degree from Kansas State University, and his M.S. and PhD degrees from Purdue. He also was a postdoctoral fellow at UCLA. He was chair of microbiology and biochemistry at ISU and was the first and longtime chair of the ISU Health Professions Advisory Committee.

Both McCunes were exemplary faculty members in the department of biological sciences. Dr. Ronald McCune is largely responsible for the development of ISU's reputation for an excellent pre-health professions program. Dr. Joan McCune provided advice and counsel that helped numerous microbiology majors to complete their degrees and find employment.

Chemistry

ISU Chemistry Department Chair Set to Retire This Spring

An “unabashed Francophile,” a squash player for the last 30 years, and an avid hunter, Idaho State University chemistry chair and professor **Dr. Dennis Strommen** retired from ISU this spring.

Strommen, who taught and completed research for 12 years at ISU and is retiring with emeritus status, wants to travel more to Europe, particularly

France, where he has a trip planned this fall. One of his favorite things to do in that country is to visit old French monastery sites.

“I am fascinated by the interactions of the church and the state in my favorite parts of France during the Middle Ages,” Strommen said.

The hobbies mentioned above, as well as others, balance Strommen’s chemistry research expertise in Raman spectroscopy, a light scattering technique that is ideal for studying molecular vibrations of ground states and excited states and has a variety of applications.

“In retirement I hope to complete a lot of research I wasn’t able to finish due to my role as department chair,” Strommen said. “I want to continue to work with some of the faculty members on projects.”



Chemistry Professor Retires This Summer



Dr. John E. Sutter, professor of chemistry who may be better known as The Wizard, will retire this summer after teaching at ISU for 33 years.

“I’ve had a great, great time at ISU,” Sutter said. “I appreciate the enthusiasm of students here and enjoy helping them think through ideas.”

Sutter graduated with a B.S. degree in chemistry from Siena College, Loudonville, N.Y., in 1965. In 1971 he graduated with a PhD in inorganic chemistry from Purdue University in West Lafayette, Ind.

However, he says he liked the small college setting of Siena better than Purdue, which is a tough school for many because of the large class sizes. He says he “chose to come to a smaller school. Then ISU had a population of about 6,000—much smaller than now.”

During his teaching career at ISU, Sutter has learned how to say things in different ways so that students can understand. He says that he has also learned from the students themselves. “They’ve probably taught me more than I’ve taught them,” Sutter said.

He has been published in science journals such as the *Journal of Chemical Physics* and the *Journal of Physical Chemistry*. In lab, his students use manuals that he wrote.

For 25 years, Sutter has performed demonstrations for elementary, junior high, and senior high school students. These presentations deal with chemical changes, from creating orange tornados to turning pennies into vapor.

“It shows them how fun chemistry can be,” he said.

Wiegand Recalls Being Hung in Effigy

“I’m probably the only faculty member at ISU ever to have been hung in effigy,” laughed chemistry professor **Dr. Gayl Wiegand** as he reminisced on his 39 years at ISU.

“In the late 1960s,” he explained, “I gave a relatively easy

exam to my organic chemistry class just after Spring Break.

Their performance on it was miserable, so the following Friday, without announcing it beforehand, I gave the identical exam to them and told them that it would count toward their grade, figuring they would have corrected their mistakes by then. They did worse!

“The following Monday,” he continued, “there was a dummy with my name on it hanging in the big tree outside the main door of the SUB. I discovered that over the weekend several of the more disgruntled students had, after a few beers, purchased jeans, a sweatshirt and some rope, built the dummy, and under the cover of darkness had hung ‘me’ in the tree.”

Wiegand, who is retiring this month, earned his B.S. degree in chemistry at the State University of Iowa and his Ph.D. in organic chemistry at the University of Massachusetts, Amherst, prior to joining the ISU faculty in 1965.

At ISU, he taught advanced organic chemistry, chemistry for non-majors, chemistry for students in the health-related professions, chemistry for teachers, and glassworking, among other classes. He was chair of chemistry from 1989 to 1992 and served on numerous university and college committees. He has published research in collaboration with undergraduate and graduate students and has written two textbooks.

In retirement he has several writing projects and may have the opportunity to write part of a new chemistry textbook. “My house needs work, and my pickup truck and tent trailer need exercise. I want to stalk a few more antelope and deer and get on a horse to chase elk. Then there’s my boat that needs water.”



Dr. Gayl Wiegand

Theatre & Dance

Church of Jesus Christ of Latter-day Saints Foundation Donates \$80,000 Concert Grand Piano to ISU Stephens Center

The Church of Jesus Christ of Latter-day Saints Foundation has donated \$80,000 to the Idaho State University Foundation to acquire a Steinway and Sons concert grand piano for the **Joseph C. and Cheryl Jensen** Grand Concert Hall in the new **L.E. and Thelma E. Stephens** Performing Arts Center.

“As we continue to build the Stephens Performing Arts Center, what a difference it will make to have a Steinway for the Jensen Grand Concert Hall,” said ISU President **Dr. Richard L. Bowen**. “Support from individuals, corporations and foundations such as the Church of Jesus Christ of Latter-day Saints Foundation is very much appreciated. We look forward to the cultural opportunities this gift will help provide.” “The Stephens Performing Arts Center is a magnificent facility,” said **Thomas W. Clark**, president of the Pocatello, Idaho, University Second Stake of the LDS Church. “The reason we wanted to support the acquisition of this piano is because of the vision President Bowen has to help ISU grow and prosper, and the great asset the facility will be to the community. Providing the piano was just the right thing to do. “Typically,” Clark continued, “the Foundation focuses on humanitarian giving and aid throughout the world. It is rare for it to use funds for a cultural gift, and this shows just how special this gift is and how strongly Church leadership feels towards ISU.” **Joseph Jensen**, president-elect of the ISU Foundation and benefactor of the Joseph C. and Cheryl Jensen Grand Concert Hall, expressed gratitude for the gift. “It is wonderful to see the LDS Church, as a significant member of this community, step forward and make this unusual gesture,” Jensen said. “ISU is one of the most important assets of the southeastern Idaho community, which we all have a responsibility to support. I am also proud and delighted that the venue will have a Steinway concert grand, which will help support New York City where I now live.”



ISU music department personnel expressed their gratitude for the gift. “We are thrilled and extremely grateful to the Church of Jesus Christ of Latter-day Saints Foundation for donating the funds for a concert Steinway,” said **Dr. Kori Bond**, ISU assistant professor of piano. “This instrument is necessary for nearly all of our concerts, and the donation of this precious instrument will be appreciated by students, faculty, and community members alike.”

The nine-foot “Concert Grand Model D” piano has a retail price of almost \$100,000 but ISU is purchasing it at a special price for educational institutions. Steinway pianos, which are built in New York City, are renowned worldwide for their quality and are used on great concert stages throughout the world.

Clark was quick to give credit for acquiring the piano to central LDS leadership in Salt Lake City, and the efforts of Pocatello University Second Stake member **Wade Tolman**, and LDS First Counselor of the Presiding Bishopric, **Richard C. Edgley** of Preston, Idaho.

Communication & Rhetorical Studies

ISU Rupp Society Debaters Post Wins In National Tourney

Idaho State University **James M. and Sharon E. Rupp** Debate Society team members won big in Las Vegas earlier this year. They weren’t gambling, but they were wagering on winning a qualifying slot to the National Debate Tournament (NDT). In a six-round district qualifying tournament, the team came out ahead, qualifying the policy debate teams of **Richard Howell** and **Izak Dunn**, and **Krista Dewey** and **John Dewey**.

The National Debate Tournament invites only the best teams in the nation to slug it out in a quest for the national debate championship. Founded in 1947, the NDT has determined the big winner in college debate every year since then. It is an honor just to be invited. Teams must have a high win-loss record to compete for a competition slot at the NDT. There are nine regional districts, which hold qualifying tournaments to select the teams.

ISU had three teams competing at the district championship tournament. As a whole, the squad won 15 debates and lost three. Dunn and Howell placed first as a team. Dunn was also the first place individual speaker at the tournament. John and Krista Dewey earned the third place team award. Krista was also the third place speaker at the tournament.

Garrett Bloom and **Jessica Yeats** placed fourth as a team. Since there were four slots available for the National Debate Tournament, ISU should have qualified all three teams. However, the rules allow only two teams from each school to qualify.

“I am very proud of my teams for winning the tournament and qualifying for the NDT, but, I’m most proud of the way they work together as a squad,” said ISU debate coach **Sarah Partlow**.

Economics

Ure Wins Prestigious Cooke Foundation Scholarship

Awards Are Most Generous Offered by Any Private American Foundation

Thirty-nine recent college graduates from across the country, including Derid Ure Idaho State University, were recipients of the 2004 Jack Kent Cooke Foundation Graduate Scholarship. Each of these graduates will receive an annual award of up to \$50,000 for the length of their graduate or professional degree program. These are the largest offered by any private foundation in the United States.

This year's recipients were chosen from a pool of 1,226 nominees submitted by 747 colleges. Teams of academic representatives – including college deans, professors, and admissions officers – assisted the Foundation in the selection process. The program began in 2002, and the Foundation has now awarded 132 graduate scholarships worth \$24 million.

“We developed this program to offer outstanding individuals the financial freedom to pursue their highest calling through advanced education,” said Dr. Matthew J. Quinn, the Foundation’s executive director and a former college president. “In this group, we have found 39 of the finest students in America, and we expect they will make tremendous contributions to their professions and communities.”

Derid Ure will use his scholarship to attend dental school at the University of the Pacific in San Francisco. He is a first-generation college student from Aberdeen, Idaho. He graduated this May with a degree in Economics and was also awarded a 2004 Outstanding Student Award. (see related article on page 7)

English & Philosophy

ISU Professor Collaborates With Tennessee Professor on Optical Logic Grant

Idaho State University philosophy professor **Dr. Jonathan Westphal** is collaborating with Fisk University physics professor Dr. John Caulfield on an up to \$11.5 million grant to examine optical logic for ultra-fast communications networks and computing. The two universities have received \$2.3 million for study this year.

The grant from the U.S. Department of Defense (DOD) Missile Defense Agency is one of the largest congressional set-asides in the history of optics. The project has the potential to make information delivery roughly four times faster on fiber-optic lines and to make it more secure. The project will bring five high-paying jobs to southeast Idaho and the same number to Tennessee, and has the potential to bring more to each region. Currently, at junctions in fiber-optic lines, fast optical signals must be converted to electronic signals to determine where they are supposed to go, re-converted back to optical signals, and then routed.

“This process is relatively slow and expensive, and it is vulnerable because electronics leaves a magnetic trace that can be read,” Westphal said. “Optical signals are faster and leave no such trail, and that is why they are of interest to national security organizations.”

Westphal and Caulfield’s new system would use “optical logic” as opposed to the electronic circuitry now in use. Optical logic circuits would be designed with light guides instead of silicon circuits “so you are just sending light around instead of electronic signals.”

The optical logic circuits would not create heat, which would be another advantage for their use especially in aerospace applications. Computing chips used in some of these applications generate enough heat that they must be cooled down mechanically with small fans.

With the DOD backing, two projects will be funded: one at Fisk University focusing on optical issues, the other at ISU focusing on logical issues.

ISU will begin its study in May and will create a laboratory, most likely in the ISU Business and Research Park on Alvin Ricken Drive.

Westphal earned his doctorate in philosophy from the University of London in 1981. He is author of “Colour: A Philosophical Introduction and Philosophical Propositions.” His articles and reviews have appeared in numerous journals including Philosophy, Mind, Inquiry, Studia Leibnitiana, and TLS. When not busy with research and teaching, he is working on the book “The Dawning of an Aspect: Some Problems in Wittgenstein’s Philosophical Investigations.”



English Professor Retires From Lifetime of Teaching

Dr. Dennis M. Walsh, Idaho State University English professor for 24 years, retired last December after a 40-year teaching career. He will be awarded emeritus status at May commencement.

“I’ve been really happy with living in Pocatello,” he said. “There are places to fish, ski, ride bikes—it’s been a good place for me and I intend to live here in retirement.”

After growing up in a small rural town in Minnesota, Walsh attended the University of Notre Dame, graduating with a B.A. degree in English in 1963. He worked his way through school and was the first in his immediate family to graduate from college.

Walsh then joined the Peace Corps and taught English and French at a high school in Liberia. In 1965, he enrolled on a full tuition scholarship at Harvard University and received his Master of Arts in Teaching English a year later. He then moved to Istanbul, Turkey, and taught English at a private school. While teaching there, he spent four summer breaks in France for only about \$1,000 per summer.

“I like living in foreign cultures. It’s interesting to experience diverse cultures and world views,” Walsh said.

Walsh received a Ph.D. in English from the University of Notre Dame in 1973. After teaching at the University of New Orleans, Northern Arizona University, and Fort Hays State University in Kansas, Walsh came to ISU in 1979. He took sabbatical leave at the University of Arizona, which led to his becoming director of composition at ISU for six years. Two years later he taught as a Fulbright scholar in Rwanda, Africa, before returning to ISU in 1988.

Walsh enjoys the rural setting of Pocatello, somewhat like that of the Minnesota town where he grew up, and ISU’s smaller size appealed to him.

“I wanted to teach students like myself and give them some advantages that I didn’t have,” Walsh said. “I also wanted to live in the mountains.”



Foreign Language

“Colonel Craig” Nickisch, ISU Foreign Languages Professor, Has Retired

Dr. Craig Nickisch, professor of foreign languages and one of Idaho State University’s pioneers in Internet teaching, has retired after 16 years at ISU and was granted emeritus status at May Commencement.

Nickisch retired as a colonel from the U.S. Army and joined the ISU faculty in 1988. He started his “Colonel Craig’s Internet Sites” in 1995, when the Internet was in its infancy, to provide resources on Germany, France, Japan, Russia, and the Spanish-speaking world, including language instruction and information about the countries.

“They are among the first and still among the most active pages devoted to foreign languages. I started largely to teach myself how to do it,” Nickisch said, citing his son, Curt, then 20 and a university student, as helping develop them.

Nickisch has also been ISU’s Fulbright Program advisor since 1996, helping students and faculty obtain the prestigious fellowships. He has held four Fulbrights, two of them postdoctoral while at ISU.

“Each year ISU has one or two good student candidates, but the competition is exceedingly stiff. All things considered, ISU has a success rate equal to the national rate,” he commented. “I am also available to work with faculty if they want me to, and advise them on what makes a strong application.”

He is an internationally recognized authority on the German World War II novel, but Nickisch’s strongest academic memories are of his students.

“There are wonderful students here,” he said. “They bring curiosity and awareness of the world and when that catches fire they do exceedingly well. Our German graduates have been successful in some of the best graduate schools in the country.”

He and his wife, Marge, are honorary grandparents for many of ISU’s students, attending baptisms and blessings and hosting two parties a year.

Marge Nickisch had led as varied a life as Craig. A journalist in Washington, D.C., high school teacher in Highland Falls, N.Y., and executive with Silver Sage Girl Scouts and florist shop worker in Pocatello, she has authored “The Energy Challenge” and “The Nebraska Home Economics Energy Management Guide.”

They have three children, Heidi Nickisch Duggan, head of access services and systems at the Lommen Health Sciences Library, University of South Dakota School of Medicine; Kirsten, a veterinarian at Alta Animal Hospital in Pocatello; and Curt, a public radio journalist in South Dakota.

Geosciences

ISU Emerges As National Leader In Mars Study

Mars exploration is constantly in the news, and Idaho State University is emerging as a national leader in studying the “Red Planet.” ISU department of geosciences researchers made presentations at two national conferences last spring. One was for the 35th Lunar and Planetary Science Conference (LPSC) in League City, Texas, and the other was at the Johnson Space Center for the Geological Society of America’s (GSA) Rocky Mountain Section and Cordilleran Section Joint Meeting in Boise.

“This is timely because there are new efforts made to explore planets like Mars,” said

Dr. Scott Hughes, geosciences department chair. “The interest has been there for decades. We hope that some of our research will contribute to humanity’s long-term plans to eventually put people on Mars.”

ISU’s Mars research is aided by the university’s proximity to the Snake River Plain. The term “Plains Style Volcanism” was coined to describe the geological features of the Snake River Plain (SRP) and similar regions on Mars and other planetary bodies. Volcanic activity and its aftermath are among the geologic features shared by Mars and the SRP.

“Idaho is an ideal place to observe Mars-like volcanic features where hundreds of small basaltic shields dominate the volcanic and sedimentary depositional sequence,” Hughes said. “The shapes and surface characteristics of small shield volcanoes on the Snake River Plain provide a method to evaluate eruptive processes and magmatic evolution on Martian volcanic plains.” Shield volcanoes have broad, gentle slopes built by the eruption of basalt lava.

ISU’s conference presentations are components of a three-year \$570,000 NASA grant spearheaded by associate geosciences professor **Dr. Glenn Thackray**, the principal investigator, and assistant research geosciences professor **Dr. Nancy Glenn**. Hughes and geosciences professor **Dr. David Rodgers** are co-investigators. Geosciences postdoctoral research associate **Dr. John Chadwick** and Hughes are doing the majority of the Mars-related research with extensive student participation. ISU will present four papers at the LPSC, and Hughes will convene the session on “Mars Tectonism and Volcanism.”

Tectonics is the branch of geology that studies folding and faulting in a planet’s crust. Three LPSC papers, first-authored by Chadwick and geosciences students **Sharon Brady** and **Serena Weren**, deal with Mars’ volcanic features and are direct results of the NASA grant. Brady’s paper will also be presented at the GSA Joint Meeting. A paper by Hughes for the LPSC compares SRP volcanic features to similar features on the lava plains of Mars. “We’re looking at Mars volcanoes that are similar in size and shape to those on the SRP to better understand the magmatic and volcanic history of Mars,” he said.



Dr. Scott Hughes

History

History Professor Receives \$40,000 NEH Grant for Research in Spain

Idaho State University history professor **Dr. J.B. “Jack” Owens** has received a \$40,000 National Endowment for the Humanities grant to study and write a book about the impact of illegal economic activity on political authority during the reign of Spain’s Phillip II. “These kinds of awards are a tremendous honor because they are given only to a few people,” said Dr. James Pratt, former ISU dean of arts and sciences. “They’re hard to get, and this is just more evidence of the quality of Dr. Owens’ work.”

“I appreciate all of the support I have received from faculty colleagues and the encouragement I got from Dr. Edwin House, the university’s chief research officer, and the Office of Sponsored Programs to pursue external funding for my work, even when the chances of success appeared low because so few grants are available in my field,” Owens said.

Owens will research investigative reports from 1565, trial records, and the Spanish archives to uncover 16th century smuggling activity in Spain along the rugged and mountainous border between Castile and Valencia.

Little is known about this once large and complex “shadow empire,” and Owens will be looking at its organization from the Americas to Italy, as well as implications for the world economy. This project is an extension of Owens’ earlier research investigating Castilian clandestine trade conducted during the 1560s “The NEH fellowship provides me with a welcome opportunity to reshape our understanding of European and Atlantic economic and political developments during the first global age,” Owens said. The NEH grant will allow Owens to continue research on this topic in Spain and write a book with the working title “Clandestine Political Economies and the Exercise of Public Authority in Philip II’s Spain.”

Other grants, some also from the NEH, have allowed Owens to study in the Spanish cities of Toledo, Granada, Murcia, Madrid, Valladolid, and Cuenca.



James E. Rogers Department of Mass Communication

Video production professor Trinklein to retire

Much honored video production professor **Mike Trinklein** is retiring from Idaho State University, but he isn't slowing down any time soon.

Trinklein, who earned his master's degree in media production from the University of Iowa and a B.A. in radio-television-film from the University of Wisconsin-Oshkosh, has been a member of the mass communication faculty for 20 years.

As for his future plans, Trinklein will be doing production work for a variety of clients.

"I'm already working on projects for the Green Bay Packers, Kohler, the Milwaukee Brewers, and several Lutheran organizations," he said.

In addition, he's hoping to finish a film on Lewis and Clark this summer, completing the trilogy he started with *The Oregon Trail* in 1992 and *The Gold Rush* in 1998, both of which aired nationally on PBS. "My thesis on this latest project is that Lewis and Clark are grossly overrated. I know that's heresy to many, but the facts are clear."

Trinklein has already developed an elaborate Web site for the Lewis and Clark project—trailblazers101.com. His first Web site, oregon-trail.com, was listed by *Forbes* magazine as one of the top 10 history sites on the Internet and was also honored by the National Endowment for the Humanities.

Over the years, Trinklein's Web and video work have received seven awards in the Broadcast Education Association's juried competition and the silver award twice from the International Television Association.

Although Trinklein is moving back to his native Wisconsin, he says he'd like to maintain a relationship with the university. "I might teach an occasional summer workshop," he said. "We'll be back often."

Trinklein adds that his adult life started by following the famed suggestion of publisher Horace Greeley to "Go West, young man, and grow up with the country." "It was good advice. It's been quite an adventure."



Political Science

Poli Sci Honor Society Names Sen. Marley as Statesman of the Year

Pi Sigma Alpha, the political science honor society at Idaho State University, has announced Idaho State Sen. Bert Marley as the winner of its 2004 Statesman of the Year Award.

The honor is awarded to Idahoans who have made a distinguished contribution to the welfare of the state. According to Pi Sigma Alpha, "In his two terms as a member of the Idaho Senate, and in two terms as a member of the Idaho House of Representatives, Marley has demonstrated his commitment to higher education." As a member of the Joint Finance and Appropriations Committee, he has fought to protect and increase funding for ISU, provided assistance and support for special building projects, and worked to restrain increases in student fees.

Physics

ISU Chosen as a Rural Regional Center For Physics Teacher Training

Idaho State University will serve as a rural regional center for high school physics and physical science teacher training for the next four years.

ISU will host weeklong summer workshops for teachers from Idaho, Wyoming, northern Utah, northern Nevada, and eastern Oregon with follow-up sessions during the school year.

Dr. Steven Shropshire, ISU associate professor of physics, will coordinate the program.

According to Shropshire, "The program will serve isolated and neglected rural teachers. It will provide opportunities for these teachers to grow professionally in science content, in the use of technology for instruction, and in established teaching strategies.

These teachers will also form the foundation of a professional and supportive network for physics and physical science teachers in Idaho, Utah, Wyoming, Nevada, and Oregon."

The program is co-sponsored by the American Association of Physics Teachers and the Physics Teaching Resource Agents. Funding for the center and participating teachers, totaling \$79,100, is provided by the National Science Foundation and will support travel, room and board, and a stipend for participants.

Mathematics

Sonia Kovalevsky Day Devoted to Girls and Mathematics Held at ISU

Two members of the ISU mathematics faculty – **Dr. Cathy Kriloff** and **Dr. Tracy Payne** – and retired public school teacher, principal and administrator **Dr. Carole McWilliam**, organized a Sonia Kovalevsky Math Day at ISU last winter that targeted high school girls interested in mathematics and science. The event, despite a severe February winter storm, brought 23 of 30 girls signed up to ISU’s campus to attend a variety of workshops relating to math and the various disciplines that use it. Three high school teachers also participated.



Students Learn that Math Can Be Fun

Organizers hope to host a similar event during the spring of the upcoming academic year. “Our goal wasn’t to recruit girls to be mathematicians, but just to encourage them to continue taking math and to not rule out entire careers because of the math involved,” Payne said. “We don’t want girls closing doors on options because they don’t have enthusiasm for their math classes. And if they are enthusiastic about mathematics, that’s wonderful, and we want to reinforce that.” Keynote speaker **Linda Deck**, director of the

Idaho Museum of Natural History, delivered a presentation on practical applications of math that allow museum curators to use a digital scanner to add missing pieces to existing fossil dinosaur bones or to create replicas of missing bones. In addition there were five workshops:

- **“Cryptography and Coding,” explored an area of math used to make sure that a message arrives correctly, and that only the right people can read it;**
- **“Everyday Economics,” discussed how mathematics is involved in everyday purchasing and saving decisions;**
- **“A Contest on Numeracy,” was a team competition on everyday counting, probability and logic;**
- **“Symmetry and Polyhedra,” explored patterns of symmetry and participants built polyhedra using kits; and**
- **“Hydrology,” explored the statistical techniques used by water managers and scientists to manage water in eastern Idaho.**

A career panel, a book discussion for teachers, contests, games and the awarding of prizes rounded out the event.

“There was an enthusiasm amongst the girls by the end of the day,” Kriloff said. “They were excited about the applications they saw and it makes me hopeful many of them will persevere with careers in math or related fields. Some of the girls had a lot of energy and they definitely had some fun.”

Sonia Kovalevsky, for whom the day is named, was born in 1850 in Moscow, Russia, and earned a doctorate in mathematics at age 24. She was a well-known and highly regarded researcher on the interface of mathematics and physics and was appointed to a professorship in Stockholm, where she received a prize from the Swedish Academy of Science and was elected a member of the Imperial Academy of Science in Russia. In addition, she wrote plays and used her political influence to advocate for women and the disenfranchised. She died at the age of 41. The Sonia Kovalevsky Day at ISU is made possible by a grant from the Association for Women in Mathematics through the National Security Agency and Coppin State University, as well as support from the ISU chapter of the American Association of University Women and the ISU Office of Enrollment Planning.



Music

ISU Wind Ensemble Invited To Perform For National Conference

The Idaho State University Wind Ensemble, directed by **Dr. Patrick Brooks**, director of bands, was selected to perform at the College Band Directors National Association Western/Northwestern Regional Conference in Reno, Nevada last March. This 42-member ensemble, selected by blind audition, is the first band from ISU to perform at a CBDNA conference. CBDNA is the largest and most prestigious organization of college band directors and is committed to promoting the study, teaching, and performance of music.

“It is truly an honor to be invited to perform at this conference for such an educated audience of musicians and conductors,” Brooks said.

The performance was a 50-minute mixture of original and challenging pieces, including “Proclamations,” by ISU music faculty member **Dr. Thom Ritter George**; “Colors and Contours,” by Pulitzer Prize winning composer **Leslie Bassett**; and “Pacem,” by **Robert Spittal**. “Concerto for Clarinet and Wind Ensemble,” featuring ISU faculty member and clarinet soloist **Dr. John Masserini**, is composed by **Jeff Beal**, creator of the music for the TV show “Monk.” “The band program at Idaho State University has steadily been growing and improving for the past several years,” Brooks said. “To be accepted to perform at such a prestigious event is evidence of how far we have come.”



Physics

Research has Applications to Homeland Security

Idaho State University physics department chair **Dr. Douglas Wells** is the principal investigator of a recently completed research project with applications to homeland security and structural testing.

The project, “Non-destructive Assay with Accelerator-based X-ray Fluorescence for Subsurface Science,” was funded by a grant from the Inland Northwest Research Alliance (INRA).

“This project’s practical applications include non-destructive detection of heavy metals and fissionable materials in waste packages, and, in homeland security applications, detecting radioactive materials in shipments across borders,” Wells said.

Co-investigators with Wells include **Dr. Tim Roney** and **Dr. Tim White**, Idaho National Engineering and Environmental Laboratory (INEEL); **Dr. James Jones** and **Dr. Frank Harmon**, Idaho Accelerator Center (IAC); and **Dr. S.P. Duttagupta** and **Dr. G. Erickson**, Boise State University. The grant supported two INRA fellows, ISU postdoctoral student **Dr. Farida Selim** and ISU master’s student **John Kwofie**.



The investigators developed a low-cost accelerator-based X-ray fluorescence (AXRF) technique to assay and image soil columns, hazardous or radioactive material containers, and bore holes. Conventional X-ray fluorescence uses low-energy electron beams to produce low-energy bremsstrahlung X-ray beams, which are then used to probe thin samples for trace concentrations of heavy metals. AXRF probes more deeply because the X-rays are higher energy.

The project has developed spin-off technology, including positron annihilation spectroscopy, used to detect defects in materials; and gamma-induced nuclear isomers, which allow non-destructive detection of small amounts of uranium and plutonium in large waste drums.

Psychology

Welcome to ISU

The Psychology Departments gives a big welcome to the following Assistant Professors who will begin teaching in the fall of 2004.

Dr. Steven Lawyer received his Ph.D. in Clinical Psychology from Auburn University in 2002. He comes to us from an NIMH Post-Doctoral Fellowship at the Medical University of South Carolina National Crime Victims Research and Treatment Center, and an Adjunct Professor at the College of Charleston in the Department of Psychology. Dr. Lawyer's past research has focused primarily on the conceptualization, study, assessment, and treatment of anxiety-related phenomena. He is currently analyzing epidemiological data concerning the September 11th World Trade Center attacks to establish links between the experience of panic and dissociative symptoms during the attacks and the subsequent development of posttraumatic stress disorder.

Dr. Shannon Lynch received her Ph.D. in Clinical Psychology from the University of Michigan in 1999. She was a Postdoctoral Fellow at the Victims of Violence Program which is affiliated with the Cambridge Health Alliance/Harvard Medical School in Massachusetts. She was, at the time of her hire, an Assistant Professor in the Psychology Department at Western Illinois University. Dr. Lynch's research focuses on violence against women and survivors' use of resources to cope with and recover from traumatic events. Her broader research goals are to contribute to theoretical models of how interpersonal violence affects women, to increase our understanding of survivors' use of resources to recover from traumatic events, and to inform treatment strategies and social policy. Dr. Lynch will continue to examine aspects of resilience and recovery in different groups of survivors of violence.

Dr. Erin Rasmussen received her Ph.D. in Experimental Psychology from Auburn University in 2001. At the time of her hire, she was an Assistant Professor in the Psychology Department at the College of Charleston. Dr. Rasmussen's research in the area of developmental neurotoxicology has examined behavioral and brain effects of prenatal methylmercury exposure across the life spans of rats. She has expanded her research and is studying currently the modulating effects of environmental enrichment on methylmercury-induced brain and behavioral alterations associated with aging. Dr. Rasmussen has several ongoing lines of research which include: the role of operant behavior in the "psychological well-being" of captive animals, and the effects of inhibitory conditioning on the conditioned compensatory response to morphine

Dr. Maria Wong received her Ph.D. in Developmental Psychology from the University of Chicago in 1993. She comes to us from a Research Assistant Professor position with the University of Michigan, Department of Psychiatry, Division of Substance Abuse. Dr. Wong's long-term research goal is to understand the development of psychological well-being, resilience, and adaptive functioning in both high risk and normal populations. Her current research interests focus on the following issues: risk and protective factors related to substance use and negative affect (e.g., anxiety, depression) in childhood and adolescence; developmental trajectories of negative affect and positive affect in childhood and adolescence and their effects on subsequent substance use and psychopathology; the development of intrinsic motivation, autonomy (self-determination), perceived competence, and their effects on emotions and behaviors; and possible gender and cultural differences related to issues in the first three areas.

around campus

Around Campus

Chief Research Officer to Retire June 30 After 38 Years at ISU

ISU Chief Research Officer **Dr. Edwin House**, who has directed ISU research efforts the past 16 years and overseen a 20-fold increase in research funding, will retire June 30 after 38 years at ISU. House leaves with mixed feelings. While looking forward to retirement, he will miss the university. “I appreciate the opportunities I have had to serve ISU,” he said. “I think ISU is the prototype of what universities are likely to be in the future, available to the general population and serving students at all levels of higher education. We have a good balance between teaching and research and serve the public in numerous ways.”



Dr. Edwin House

In 1986, when House left as biological sciences chair to become dean of the two-year-old Office of Graduate Studies and Research, grants and contracts funding was \$1.3 million and the State Board of Education did not consider ISU to be a research university.

Under House, graduate enrollment doubled and research funding skyrocketed. When graduate studies and research separated in 1996 because of the explosive growth in each area, external funding was \$13.4 million. Today, it exceeds \$25 million.

“The SBOE created a \$2 million budget for research at all four schools, and I was elected chair of the committee that oversaw the budget,” House said.

A native of Corning, N.Y., House has a doctorate in physiology from the University of North Dakota. He joined the ISU faculty in 1966 as assistant professor in biological sciences and rose to chair the department in 1979-80 and 1982-86.

He will join his wife, **Dr. Janet House**, ISU emerita professor of mass communication, in retirement in tiny Florence, Mont., 15 miles from Missoula, where their first project will be to landscape their 10 newly-purchased acres. An outdoors buff and avid fly fisherman, House may volunteer with Montana Fish and Game and plans to spend time with his family, which includes two brothers.

Alumni News

Professional Achievement Awards

The College of Arts & Sciences was happy to recognize three of its outstanding alumni with Professional Achievement Awards last spring.



The recipients are:

Dr. Rena Carlson-Lammers, College of Arts and Sciences, natural sciences and mathematics; Carlson-Lammers graduated with honors in 1985. Since 1990, she has been the animal welfare facility veterinarian for ISU. She co-owns the Alpine Animal Hospital in Pocatello.

Robert H. McNealy, College of Arts and Sciences, humanities; McNealy is an accomplished artist now living in Vancouver, Canada. Originally from Buhl, McNealy earned his B.A. degree from ISU in 1968. He is a founding member and first president of the Mercer Union Gallery, an artist-run community gallery in Toronto.

Bryan K. Murray, College of Arts and Sciences, social sciences; Murray has been a Bannock County juvenile judge since 1993. He graduated from ISU in 1980 and he earned his juris doctorate in 1982. He received the 2001 U.S. Department of Health and Human Services Commissioner’s Award for outstanding leadership and service in the prevention of child abuse and neglect.

Earl Boen, a 1963 ISU graduate, is a veteran character actor of stage, screen and television.

He is probably best known for his role as Dr. Peter Silberman in the “Terminator” movies with Arnold Schwarzenegger. Earl has had roles in many movies in addition to the Terminator series including “The Majestic”, “Nutty Professor II”, “The Klumps”, “The Odd Couple II”, “Little Indian”, “Big City, Naked Gun 33 1/3”, “The Final Insult”, “Marked for Death”, “Miracle Mile”, and “Alien Nation”.

He has also had roles in numerous television shows including such well-known shows as “M*A*S*H”, “Three’s Company”, “Family Ties”, “Night Court”, “Remington Steele”, “Eight is Enough”, “The Streets of San Francisco”, “Hill Street Blues”, “Who’s the Boss”, “LA Law”, “Thirtysomething”, “Star Trek: The Next Generation”, “Tales From the Crypt”, “Golden Girls”, “Seinfeld”, “Family Law”, “The West Wing”, “The Practice”, and many, many more. Additionally, he is a voice actor; lending his voice to numerous commercials including Jeep Wrangler and Pizza Hut and cartoons such as “Clifford the Big Red Dog” and “The Wild Thornberrys”.

Earl graduated from ISU in 1963 with a degree in Speech & Drama. He grew up in Boise and received a two-year degree from Boise State before coming to ISU. He received some scholarships and worked his way through school, including a stint as a DJ for an acid rock station. Earl got his start in acting at a very young age while his mother worked for a carnival. When they were hawking novelties on the midway, Earl was the boy in the crowd who would buy something to get them started.

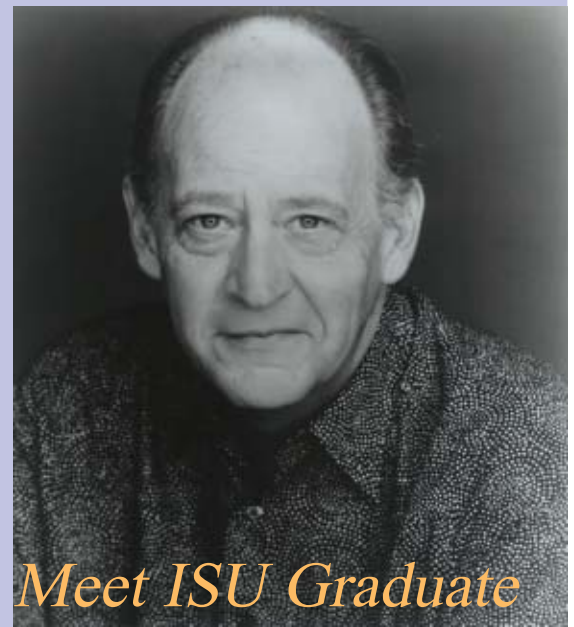
Earl knew from the beginning that he wanted to be an actor. Coming to ISU he received much guidance from theatre faculty Galen Collier and Allen Blomquist. These faculty knew he had potential, and Earl said they were very hard on him.

Dr. Blomquist recommended Earl for a McKnight Fellowship which was a program created by the 3M Corporation to bring acting students to the University of Minnesota for graduate study at the Tyrone Guthrie Theatre. Earl was selected as an alternate, but his high academic credentials led him to Michigan State University where he ran into another student from Guthrie and eventually became a McKnight Fellow after all.

Boen worked for many years in regional theatre eventually making his way San Francisco. His first commercial project was on an episode of the Streets of San Francisco. He has spent his career as a free-lance working actor, noting that his career was more of a volume business.

Earl said that as a free-lancer he was busy all of the time, always looking for the next job. He has worked on so many sets that he said it’s hard to remember the work, but he does remember the people he worked with and the pranks they played. The late John Ritter was one of the most pleasant people he had the opportunity to work with, and the set of Three’s Company was always a lot of fun. He said the M*A*S*H set was also wonderful and they all treated him as part of the family.

Earl’s wife, Carole Kean, was also in the acting business; however she found a great deal of success in writing murder mystery plays for restaurants. These plays were so successful that she created several of them to be performed in restaurants throughout southern California. Earl said he would, “help whip the kids into shape,” but Carole was the brains behind the success. He said Carole was a very good host because she focused on the party rather than the murder. Earl and Carole were married for over 31 years before her untimely death in April 2001. Earl is now retired and living in Hawaii where he spends much of his time golfing and occasionally reads for a commercial.



*Meet ISU Graduate
Earl Boen*

Recent News

1950s

Clifford and Josephine (Johnson)

Peake 1950 BA General Business and 1948 EX Chemistry

Cliff and Jo met at ISU in September 1947 and were married on Jun 6, 1948. They celebrated their 55th wedding anniversary in June 2003. Cliff was a career Chamber of Commerce Executive—42 years in 6 states—starting in Jerome, Idaho. Jo was a bank branch manager. They retired in June 1992 in New Jersey and moved to Carolina Trace, a gated community outside of Sanford, North Carolina.

Don E. and Barbara Fife Hazard

1953 BS History and 1951 EX Business

Don and Barbara celebrated their 52nd wedding anniversary on June 8, 2004. They met while students at Idaho State, and currently live in Rockwall, Texas.

Kenneth J. Cox

BS 1955 Chemistry/Geology

Ken recently retired from Kerr/McGee where he was a senior engineer. He now lives in Rigby, Idaho where he works full time at doing as little as possible!

1965

Mr. Leslie Scott

1965 BA Art

After graduation Mr. Scott attended Howard Univ. School of Fine Arts. He is currently working as a substitute teacher in art in the Waukegan school system. Mr. Scotts' paintings are exhibited in Waukegan and in Kendsha, Wisconsin.

1989

Charlotte Barthlow-Sheffield

BS Biology 1985/BS Nursing 1989

Charlotte is now a published author. "Crazy for Love" is now available through Trafford Publishing. Her next book will be out in November of 2004.

1995

Terri Lin Nelson Ireland

BS 1995 Geology and BA 1995 Anthropology

After a few years of the nomadic lifestyle of seasonal archaeologist for the National Park Service, Terri went to work for the Idaho National Engineering and Environmental Laboratory. For the past 7 years, she has been splitting her time there between Cultural Resource Management (archaeology and historic preservation), and the Subsurface Science Initiative (geologic research into the behavior of contaminants in the unsaturated zone between the ground surface and the water table below). Two years ago she was promoted to senior scientist. Last year she married high school classmate, Jeffrey Ireland, of Rigby, Idaho. They have settled into a new home in the Rigby area to continue their careers, run the family business, and raise their integrated family; daughters Megan and Sabrina, and son Ryan.

1996

Spc. Brad Chinich

BA General Studies

Spc. Chinich served one year in Iraq with the 101st Airborne (the Screaming Eagles). He also spent time in Kuwait, Qatar, and Mosul where they eliminated Saddam Hussein's sons.

1997

Kymerly Smith Mowery

BS Political Science

Kymerly started her new job March 1. She is now the Marketing Director for Burkett, Burkett & Burkett, CPAs, PA, a regional accounting firm. She and her husband, Daniel, live in Columbia, South Carolina.

We want to hear from you!
Please use the survey on page 27 to send us information about your recent news.

1999

Jennifer Strong

BA Mass Communication 1999

Jennifer is the Assistant Horticulturist for the City of Idaho Falls. She grows and plants all of the flowers for Idaho Falls parks, golf courses, and cemeteries. She is also responsible for designing many of the new landscapes for the city parks which includes drawing the plans, installation, and maintenance. She recently won the Idaho Nursery Association Award for Design Installation for the Recreational division for 2 landscapes on the Broadway Interstate Exchange.

2000

Bill Kelly and Becky Fullmer-Kelly

BS Biology and 1998 BS Public Health Ed

Bill and Becky recently welcomed their first baby boy on September 24, 2003. Kameron Caid Kelly was born at 11:10 a.m. and weighed 6 lbs. 11 oz. and was 18 inches long. Bill and Becky live in Salt Lake City, Utah.

2001

Bryce Barfuss

BS Zoology

Bryce is currently in a student in the College of Dentistry at the University of Iowa.

Momentum signup

The *Momentum* is an update about ISU for alumni, state legislators, businesses, community, and opinion leaders. *Momentum* is published weekly throughout the academic year. To see the most recent version, visit <http://www.isu.edu/urelate/momentum/>. To receive the *Momentum* by e-mail, contact taylandy@isu.edu

Recent News Survey

Name _____

Major _____ Class Year _____

Spouse's Name _____

Is your spouse an ISU graduate? Yes No

Major _____ Class Year _____

Home Address _____

City _____ State _____ Zip _____

Home Phone _____ Business Phone _____ Fax # _____

E-mail Address _____ Web Site: _____

Name of Employer _____

Business Address _____

City _____ State _____ Zip _____

I prefer to receive mail at my home or my business.

Recent news (use additional sheet if necessary): _____

We want to hear from you!

We're interested in news of career advancement or change, professional accomplishments or activities, awards, marriages, children, or any other news item you would like to share with us.

Photos are welcome!

This information will be published in our Spring 2005 Newsletter, so please return by **January 31, 2005**

Please return survey by January 31, 2005 to Idaho State University College of Arts & Sciences, Campus Box 8087, Pocatello ID 83209-8087, Fax (208) 282-4610, or E-mail artsci@isu.edu

Yes!

I want to help the College of Arts & Sciences!

Name(s) _____

Address _____

City, State, Zip _____

Phone _____ E-mail _____

Employer _____

Address _____

City, State, Zip _____

Phone _____ E-mail _____

Cash Check Visa MasterCard

Card # _____ Exp. Date _____

Signature _____

Your gift is tax deductible as defined by law.

Enclosed is my/our contribution of

\$ _____

Please apply the contribution to:

Dean's fund for greatest needs

Department _____

Other (please specify) _____

Please return gift and pledge card to:

ISU College of Arts & Sciences
Campus Box 8087
Pocatello ID 83209-8087

Thank You!

Theatre ISU

2004-2005 Schedule

Man of La Mancha

Bistline Family Thrust Theatre
October 15, 16, 21, 22, 23

The Shadow Box

Black Box Theatre
November 12, 13, 18, 19, 20

One-Acts Festival

Frazier Hall & Bistline Family Thrust Theatre
December 8, 9, 10, 11

Amy's View

Bistline Family Thrust Theatre
February 25, 26, March 3, 4, 5

Twelfth Night

Frazier Auditorium
April 22, 23, 26, 27, 28, 29, 30

Performances begin at 7:30 p.m.

To order tickets or for more information, please contact the Theatre Box Office at (208) 282-3595.

www.theatreisu.org

Music Department Concerts

Fall 2004 Schedule

October 2004

- 1 - ISU CHAMBER CHOIR with faculty soloists
- 8 - ISU CONCERT CHOIR and ISU WOMEN'S CHOIR
- 15-16 - MAN OF LA MANCHA, joint production **Bistline Theatre**
- 20-21 - guest artist Charles Castleman, violin
- 21-23 - MAN OF LA MANCHA, joint production **Bistline Theatre**
- 28 - GUEST RECITAL: Kristine Ciesinski, soprano, and Mark Neiwirth, piano
- 30 - High School Choral Invitational, Frazier Hall

November 2004

- 5 - Camerata Singers
- 8 - GUEST RECITAL: Louis Valentine Johnson, guitar, and Jose Luis Merlin, guitar, **Bistline Theatre**
- 10 - Pocatello Music Club Scholarship Competition
- 12 - ISU JAZZ BANDS
- 15 - FACULTY RECITAL: Geoffrey Friedley, tenor, and Kori Bond, piano
- 18 - ISU Student Chamber Music Night

December 2004

- 1-2 - guest artist Michael Gurt, piano
- 4 - CHRISTMAS CHORAL CONCERT: Women's Choir, Chamber Choir, Concert Choir, and Camerata Singers
- 6 - GUEST RECITAL: Katherine Edison, soprano and Mark Neiwirth, piano
- 7 - ISU Percussion Ensemble
- 10 - FACULTY RECITAL: David Gonzol, tenor & recorder
- 17 - ISU Children's Choir, **7:00 p.m.**

All concerts are in Goranson Hall in the Fine Arts Building, unless otherwise noted.

Concerts start at 7:30 p.m., unless otherwise noted.

To order tickets or for more information please call the Music Dept at (208) 282-3636.

www.isu.edu/music

Upcoming Events

Mark Your Calendar

October

18-23 Homecoming Week

22 President's Alumni Recognition Dinner Reception, Red Lion Hotel

23 Homecoming Parade



Idaho State University
College of Arts & Sciences
Box 8087
Pocatello ID 83209-8087

NON-PROFIT
ORGANIZATION
U.S. POSTAGE
PAID
BOISE, ID
PERMIT No. 765